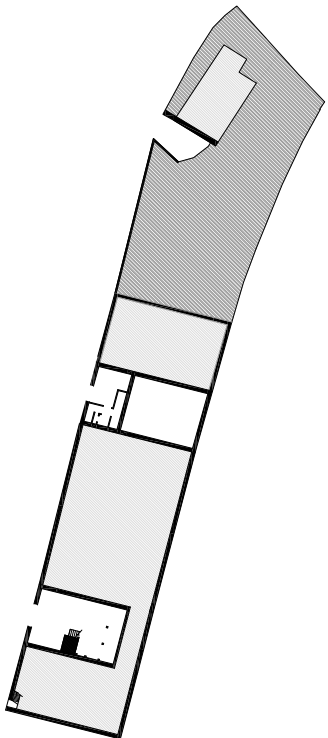
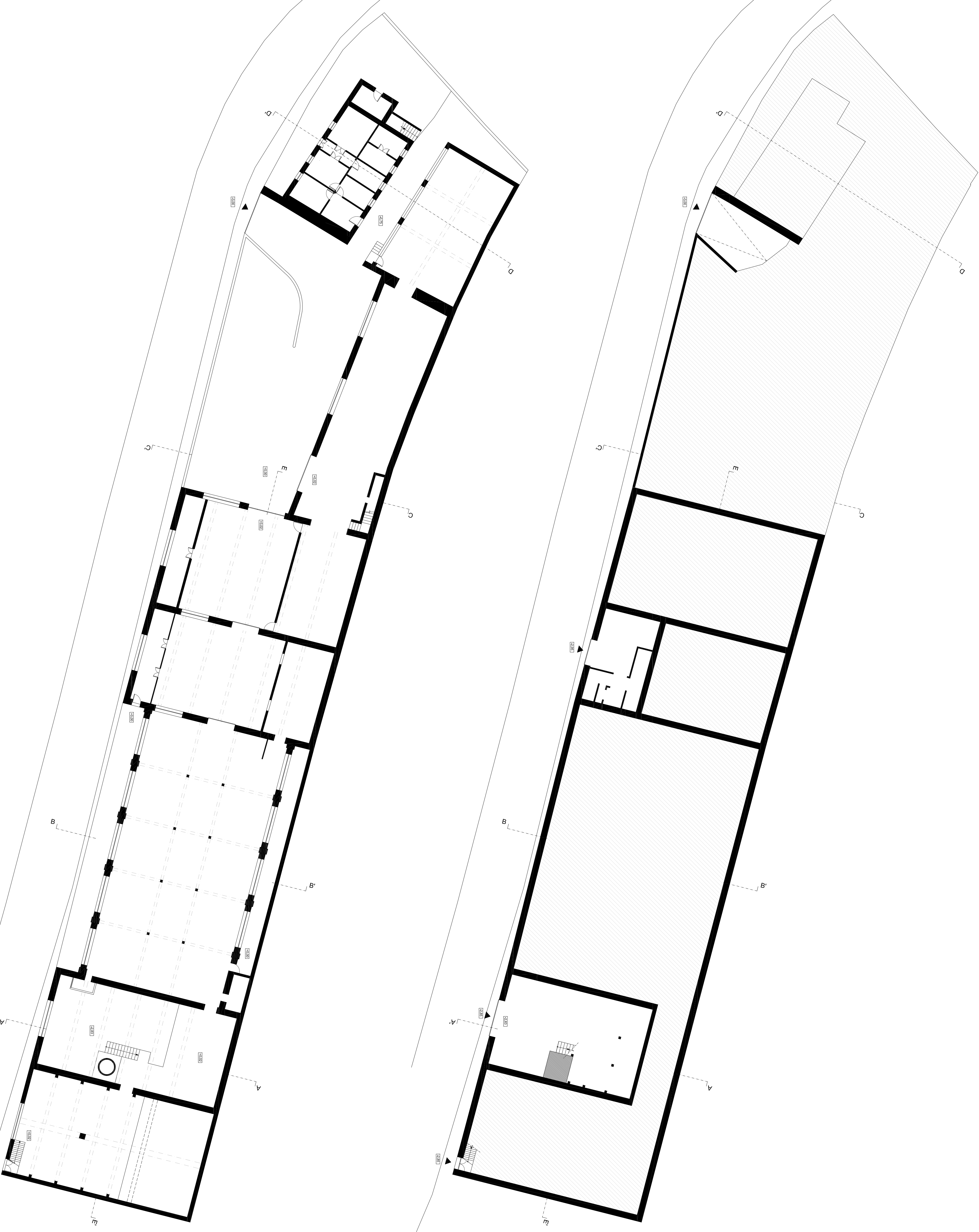
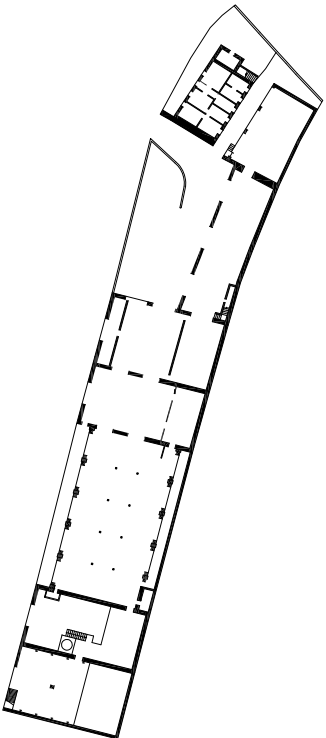


PISO -1



PISO 0



Escala			
1:200			
Tema	Caso de Estudo - Trilunaria Petrucci		
Aluna	Joana Isabel Silva Teixeira de Brito		
Orientador	Prof. Doutor João Carlos Gonçalves Lanzaia		
Co-Orientador	Prof. Doutor Miguel João Mendes do Amaral Santiago Fernandes		
Data	Junho 2012		
2	Ano lectivo	2011/2012	LEVANTAMENTO PLANTA DE PISO -1 E PISO 0