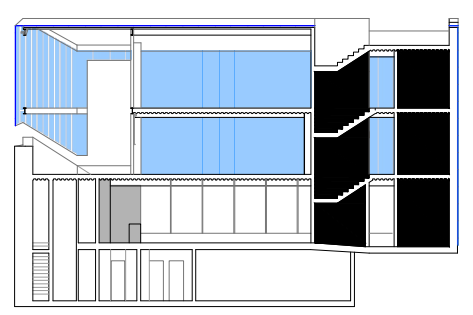
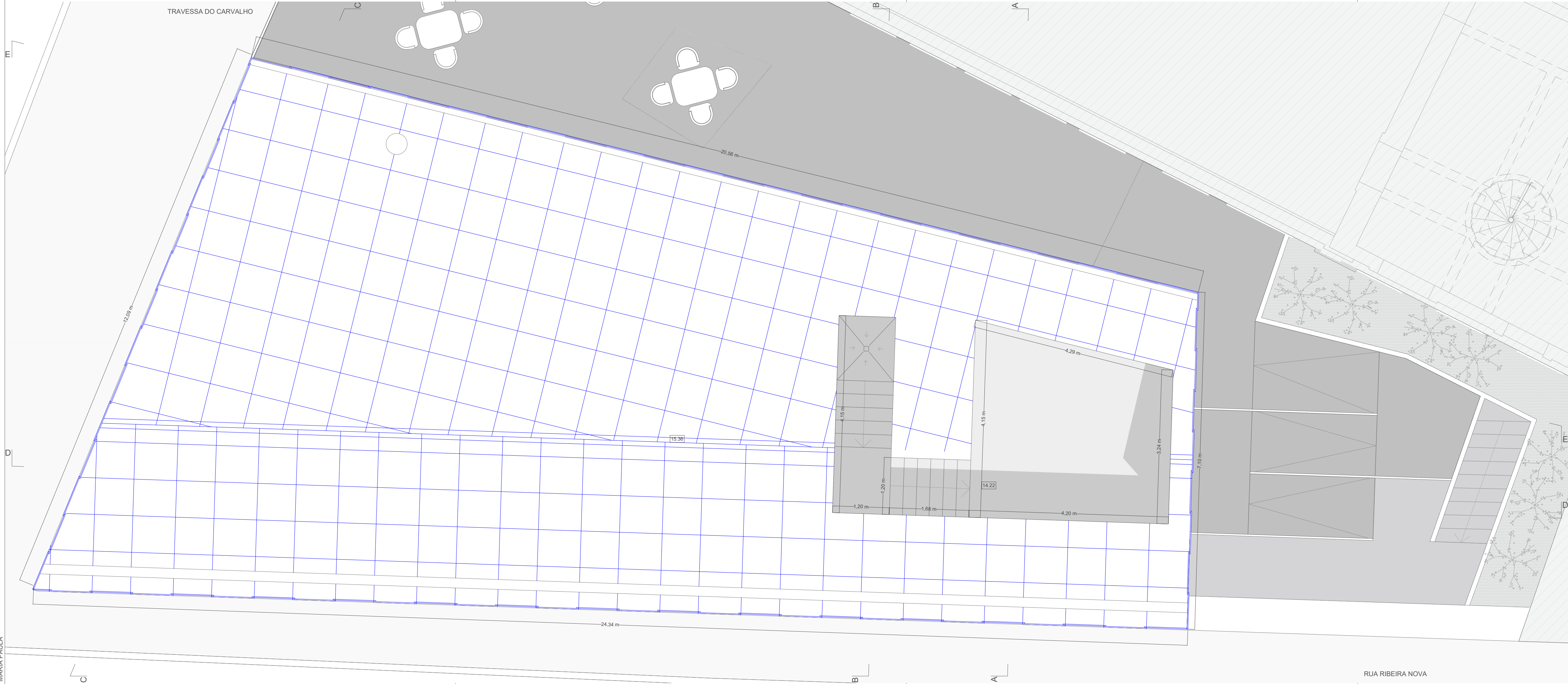




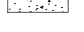





TRAVESSA DO CARVALHO



-  SEDE DA ORDEM DOS ARQUITETOS
-  EXISTENTE
-  REFORÇO DO EXISTENTE
-  PLÁSTICO RECICLADO
-  BETÃO ARMADO
-  ISOLAMENTO TÉRMICO
-  ARGAMASSA
-  PAVIMENTO - CIMENTO AFAGADO, CINZA

DISSERTAÇÃO DE MESTRADO - AMPLIAÇÃO DA (NOSSA) SEDE
UNIVERSIDADE DA BEIRA INTERIOR

DESCRÇÃO	ESCALA	FOLHA
PLANTA DE COBERTURA	1:50	P. 6

RUA RIBEIRA NOVA

35800
MARIA PAULA