

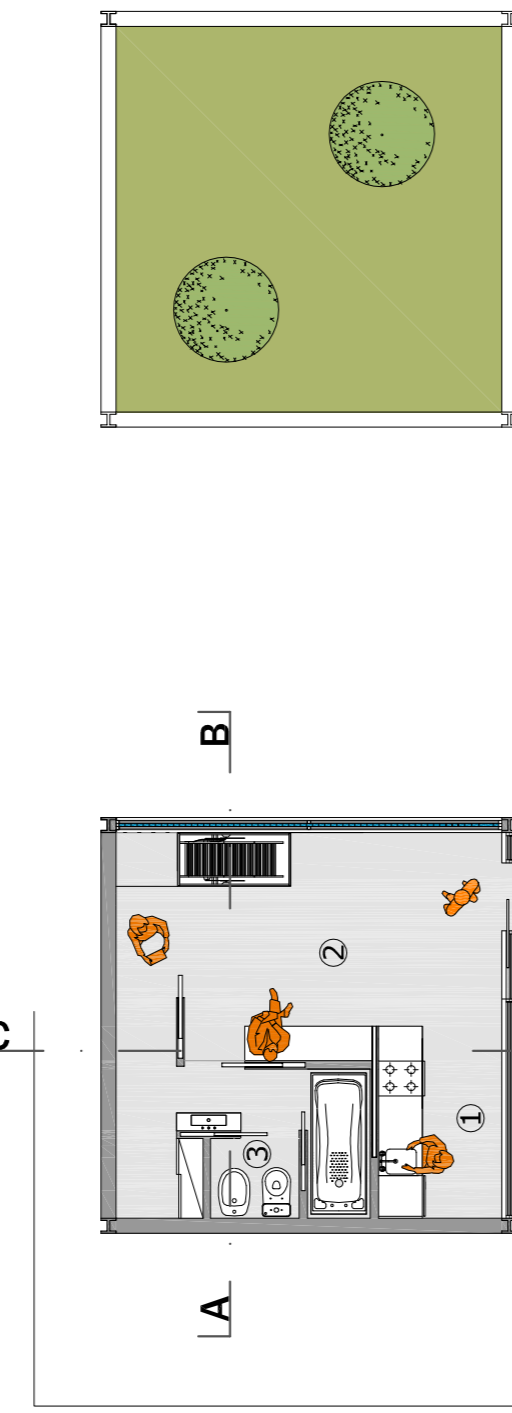
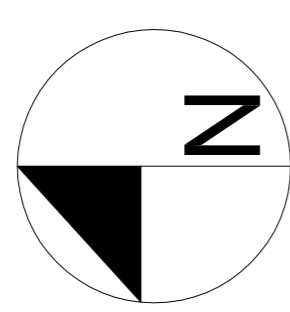
# ARQUITECTURA ECO-SUSTENTÁVEL

R Reciclar
 R Renovar
 R Reutilizar
 R Reinventar

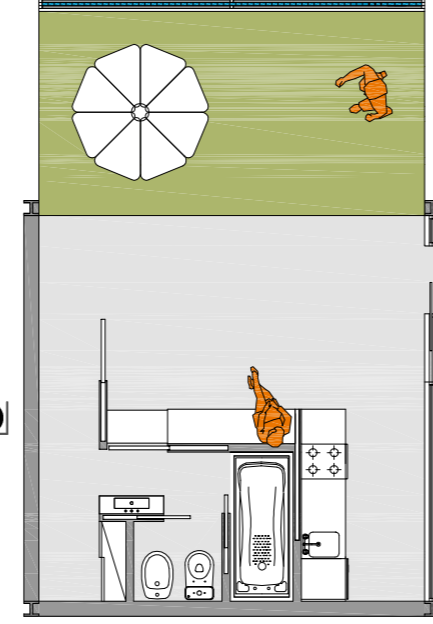
## Módulo 4

"Na natureza, nada se perde, nada se cria, tudo se transforma."  
Lavoisier

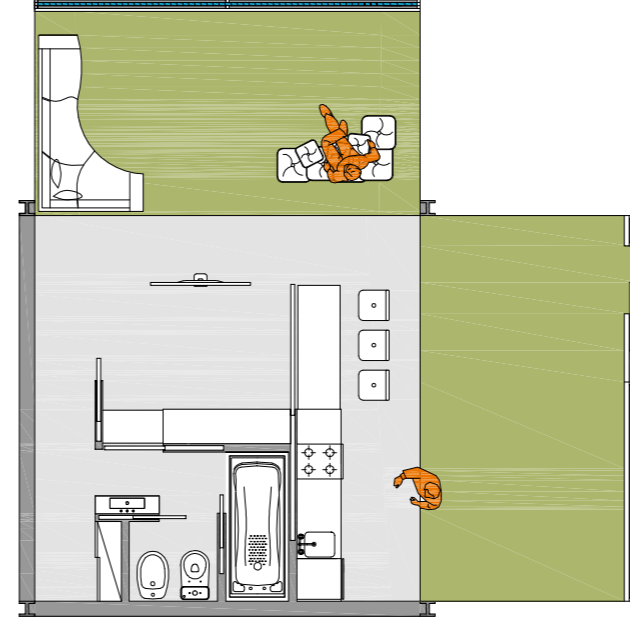
### Alçados



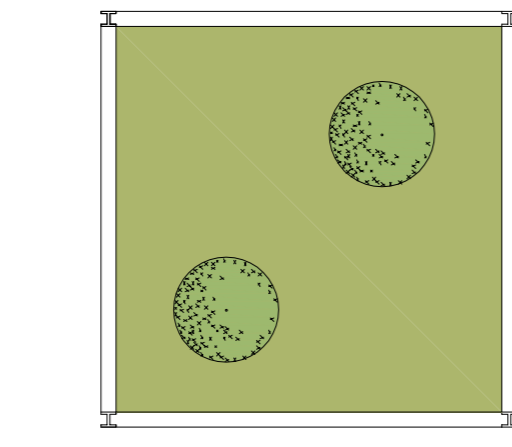
Planta do R/C - Fechado



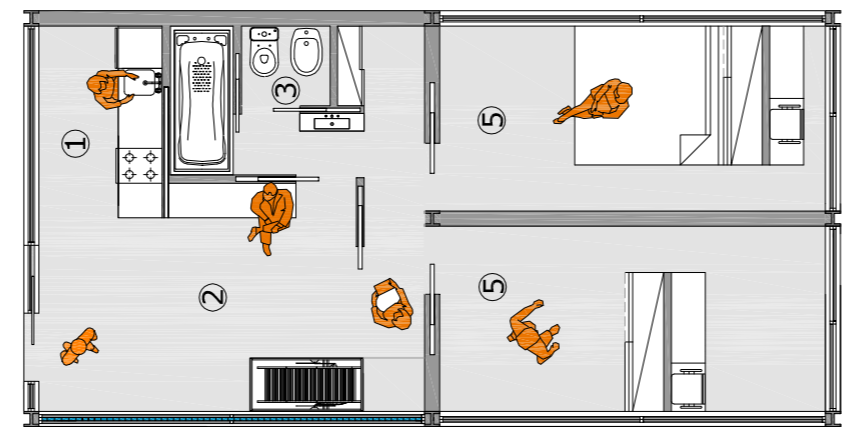
Planta do R/C - Semi Aberto



Planta do R/C - Aberto



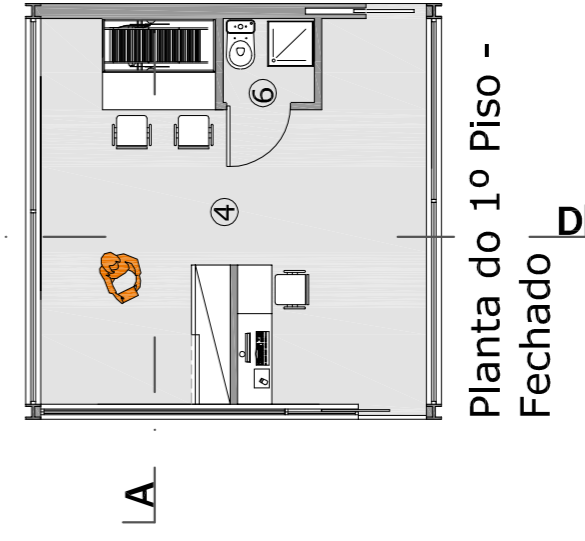
Planta de Cobertura



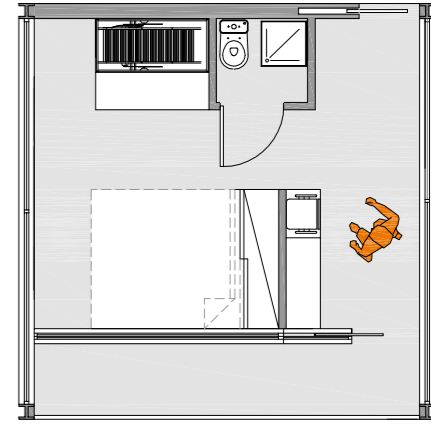
Planta do Módulo com ampliação

### Legenda

- Áreas:
- ① Cozinha - 4m<sup>2</sup>
  - ② Sala - 9m<sup>2</sup>
  - ③ WC - 4m<sup>2</sup>
  - ④ Quarto - 24m<sup>2</sup>
  - ⑤ Quarto - 4m<sup>2</sup>
  - ⑥ WC - 2m<sup>2</sup>

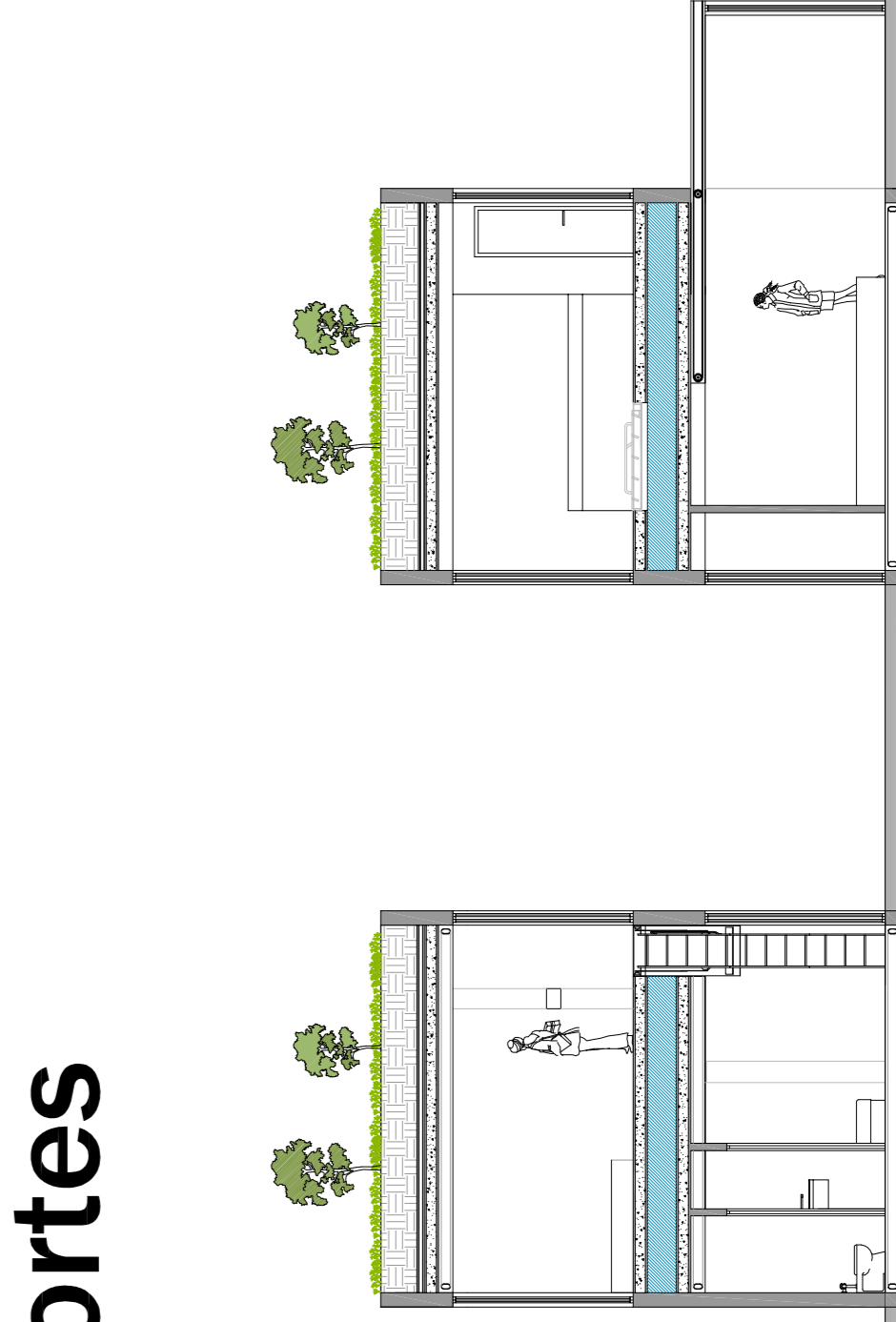


Planta do 1º Piso - Fechado

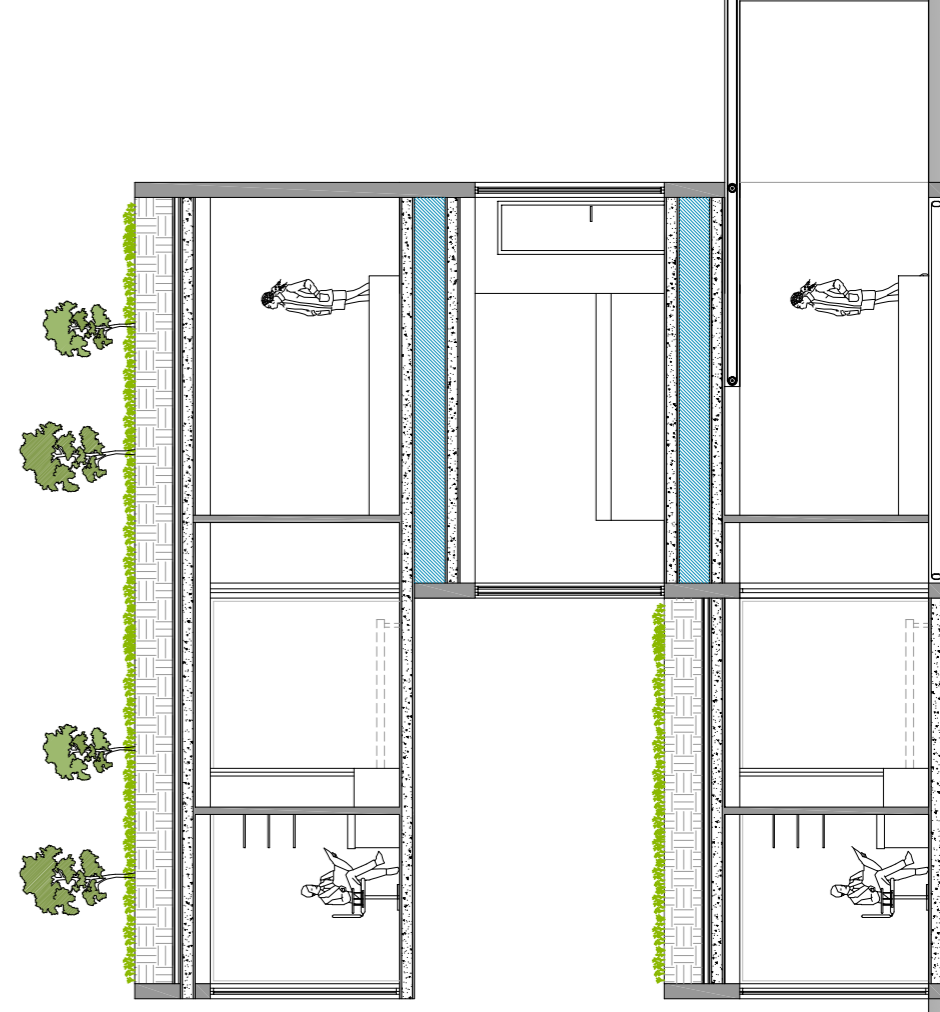


Planta do 1º Piso - Varanda

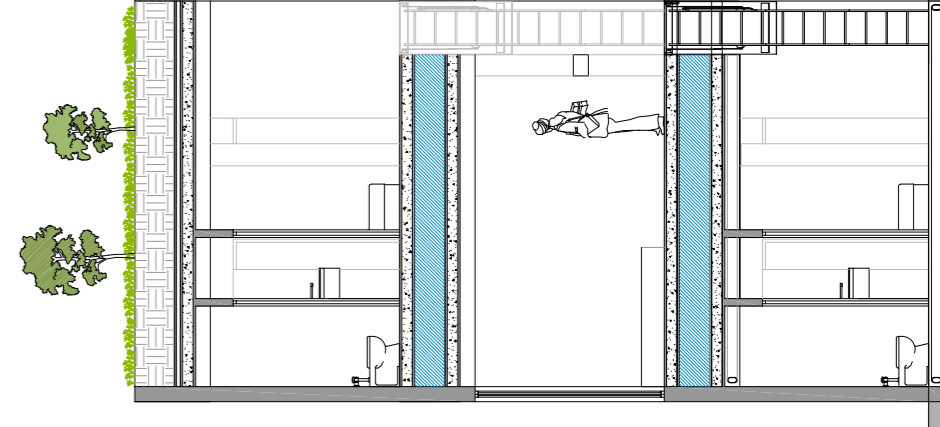
### Cortes



Corte C-D



Corte A-B  
Com 2º Andar



Corte C-D  
Com 2º Andar



**Universidade da Beira Interior**  
Departamento Eng. Civil e Arquitectura

Descrição: Arquitectura Eco-Sustentável  
 Aluno: Diogo Ferreira Lopes - Número: 16978  
 Escala: 1:100  
 Data: 29 de Agosto de 2008