







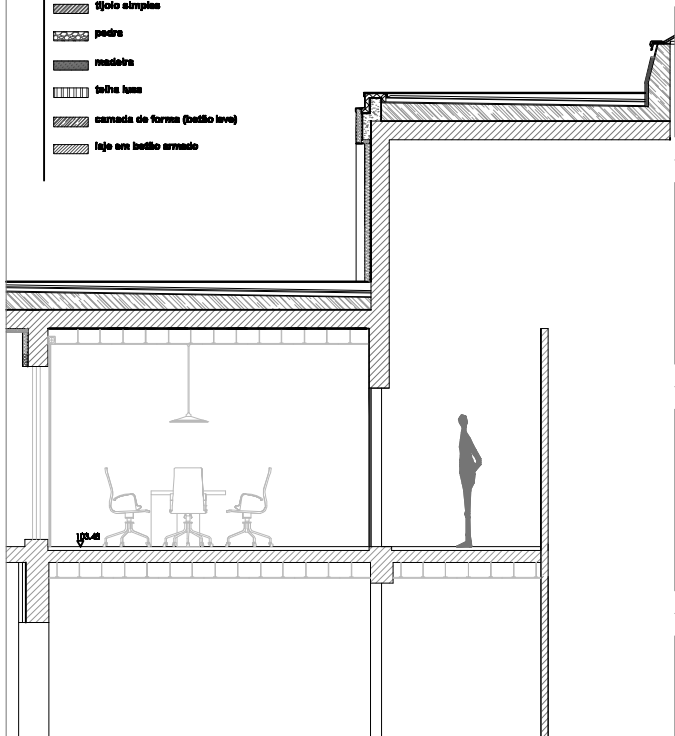


LEGENDA

-  betão armado
-  tijolo térmico
-  tijolo simples
-  pedra
-  madeira
-  talha leve
-  camada de forma (betão leve)
-  laje em betão armado



Departamento de Engenharia Civil e Arquitectura
Mestrado Integrado em Arquitectura
Dissertação / Projecto conducente à obtenção do grau de mestre em arquitectura

Local : Santa Maria da Feira

Projecto : Reabilitação de um espaço edificável num arquivo municipal

Desenho : Permenor Construtivo

O aluno: Joana Catarina Santos Pais, nº18598

Data:
JUNHO 2010

Esc.:
1/50

F18