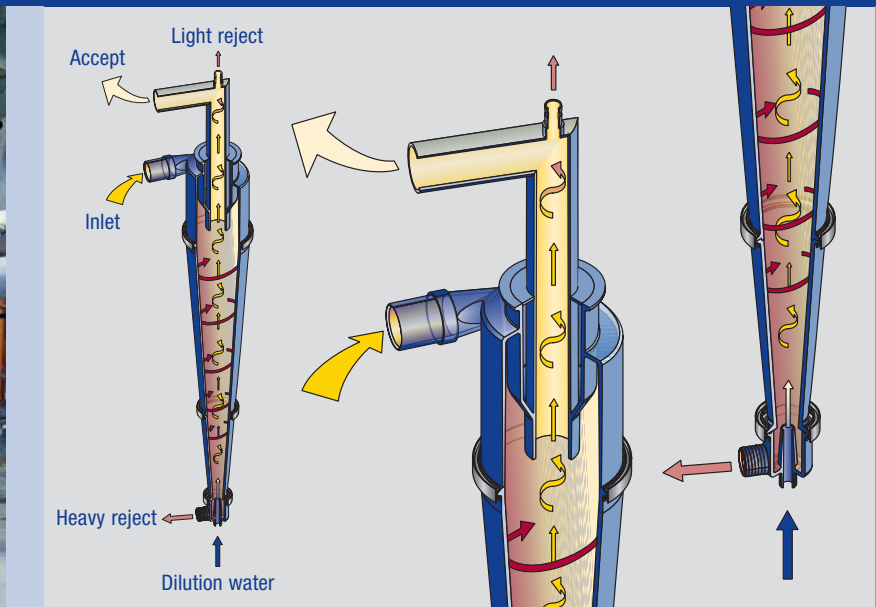
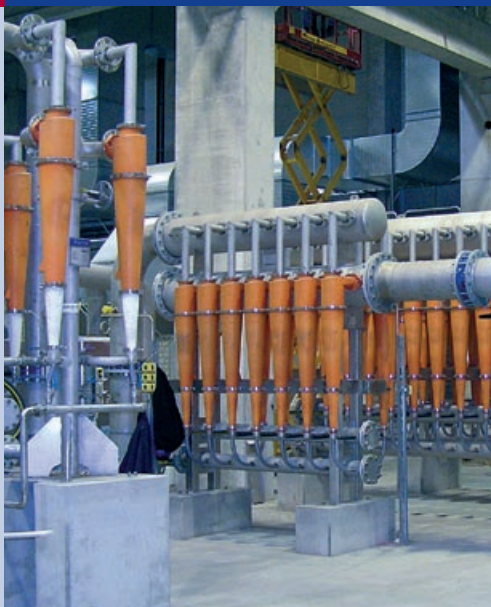


# Centrifugal Separation Low Consistency Cleaner KS900 (EcoMizer™)



### Application

Multi-stage fine cleaning of specifically heavy and light contaminants as well as removal of free air in stock preparation and approach flow systems

### Features

- Control over reject thickening independent of stock properties through EcoMizer-concept allows compact design of cleaning systems with minimum number of stages and cleaners
- Highest separation efficiencies at consistencies up to 2.0 % through smooth inner surfaces without means for creation of turbulence (ribs, spiral, etc.)
- Lowest fiber losses through high concentration of contaminants in the reject
- Minimum pulsation and blockage-free operation through reject dilution and continuous reject discharge in all stages
- Visual reject flow inspection
- Cones of plastic or wear-resistant ceramic available

**See overleaf for technical data!**

Voith Paper Fiber Systems  
GmbH & Co. KG  
Escher-Wyss-Straße 25  
88212 Ravensburg/Germany  
Tel. +49 751 8301  
Fax +49 751 832050

Voith Paper Inc.  
2200 N. Roemer Road  
Appleton, WI 54911/USA  
Tel. +1 920 731-7724  
Fax +1 920 731-0240

Voith Paper S.A.  
Rua Friedrich von Voith, 825  
02995-000 São Paulo-SP/Brazil  
Tel. +55 11 39 44-4354  
Fax +55 11 39 44-4848

[www.voithpaper.com](http://www.voithpaper.com)

Technical Data	
Type	KS900R-I / KS900E-I
Application	Precleaning and Final stage
Admissible operating pressure max. [bar]	4
Admissible operating temperature max. [°C]	70
Nominal pressure drop inlet - accept [bar]	1.5
Nominal inlet flow [l/min]	900
Required accept pressure min. [bar]	0.1
Inlet consistency max.* [%]	≤ 2.0
Dilution water flow [l/min]	60 - 120

\* Optimum consistency depends on type of debris