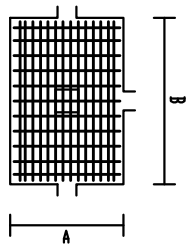
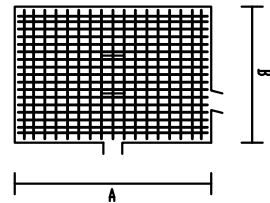


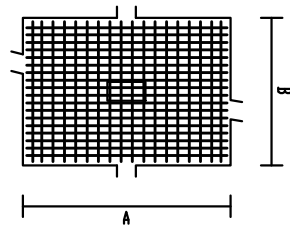
Sapata 1 Centrada
Pilar 8
Dimensões: 150x220x50 Ang: 0°
A: I: 11ø16//20(35P+140+35P) (13,207)
B: I: 14ø16//10(15P+210+15P) (13,137)



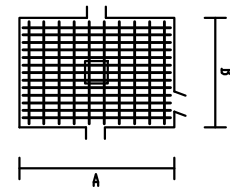
Sapata 2 Centrada
Pilar 12
Dimensões: 260x180x60 Ang: 0°
A: I: 17ø16//10(250) (13,167)
B: I: 17ø16//15(40P+170+40P) (13,247)



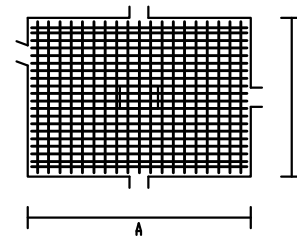
Sapata 3 Centrada
Pilar 16
Dimensões: 275x195x65 Ang: 0°
A: I: 18ø16//10(15P+265+15P) (13,182)
B: I: 18ø16//15(20P+185+20P) (13,262)



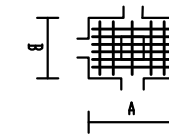
Sapata 4 Centrada
Pilar 20
Dimensões: 205x145x50 Ang: 0°
A: I: 13ø16//10(15P+195+15P) (13,132)
B: I: 10ø16//20(39P+135+39P) (13,192)



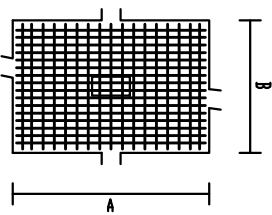
Sapata 5 Centrada
Pilar 23
Dimensões: 295x210x70 Ang: 0°
A: I: 20ø16//10(285) (13,197)
B: I: 19ø16//15(20P+200+20P) (13,282)



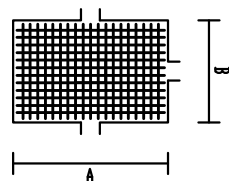
Sapata 6 Centrada
Pilar 29
Dimensões: 115x80x25 Ang: 180°
A: I: 6ø20//10(13P+105+13P) (15,65)
B: I: 5ø20//25(3P+70+13P) (15,100)



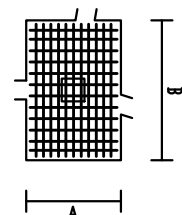
Sapata 7 Centrada
Pilar 32
Dimensões: 260x175x60 Ang: 0°
A: I: 16ø16//10(15P+250+15P) (13,162)
B: I: 17ø16//15(30P+165+30P) (13,247)



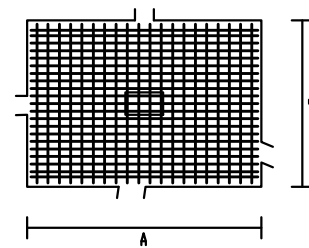
Sapata 8 Centrada
Pilar 44
Dimensões: 205x135x45 Ang: 0°
A: I: 12ø16//10(15P+195+15P) (13,122)
B: I: 19ø16//10(34P+125+34P) (13,192)



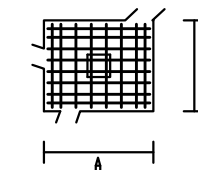
Sapata 9 Centrada
Pilar 46
Dimensões: 125x185x40 Ang: 0°
A: I: 12ø16//15(29P+115+29P) (13,172)
B: I: 11ø16//10(15P+175+15P) (13,112)



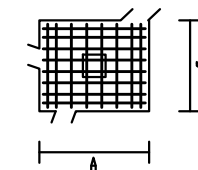
Sapata 10 Centrada
Pilar 50
Dimensões: 310x220x70 Ang: 0°
A: I: 21ø16//10(300) (13,207)
B: I: 20ø16//15(15P+210+15P) (13,297)



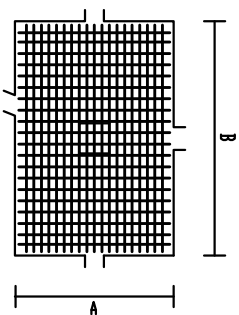
Sapata 11 Centrada
Pilar 57
Dimensões: 145x120x30 Ang: 0°
A: I: 8ø12//15(20P+135+20P) (11,109)
B: I: 8ø12//20(20P+110+20P) (11,134)



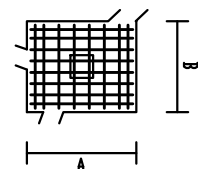
Sapata 12 Centrada
Pilar 60
Dimensões: 145x120x30 Ang: 0°
A: I: 8ø12//15(20P+135+20P) (11,109)
B: I: 8ø12//20(20P+110+20P) (11,134)



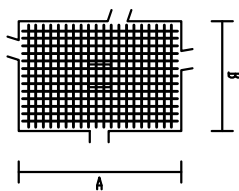
Sapata 13 Centrada
Pilar 63
Dimensões: 210x310x70 Ang: 0°
A: I: 20ø20//15(40P+200+40P) (15,295)
B: I: 19ø20//10(300) (15,195)



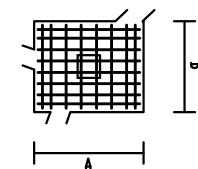
Sapata 14 Centrada
Pilar 69
Dimensões: 145x120x30 Ang: 0°
A: I: 8ø12//15(20P+135+20P) (11,109)
B: I: 8ø12//20(20P+110+20P) (11,134)



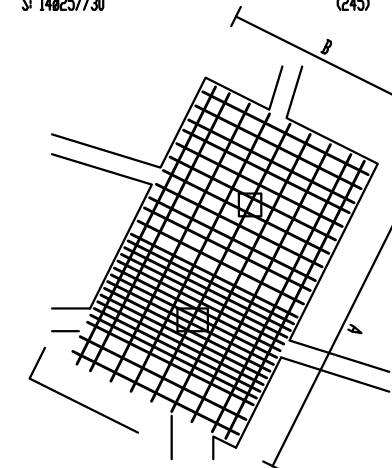
Sapata 15 Centrada
Pilar 72
Dimensões: 215x145x50 Ang: 0°
A: I: 13ø16//10(15P+205+15P) (13,132)
B: I: 20ø16//10(39P+135+39P) (13,202)



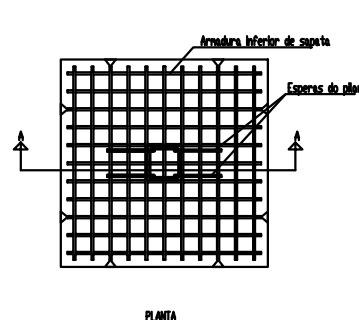
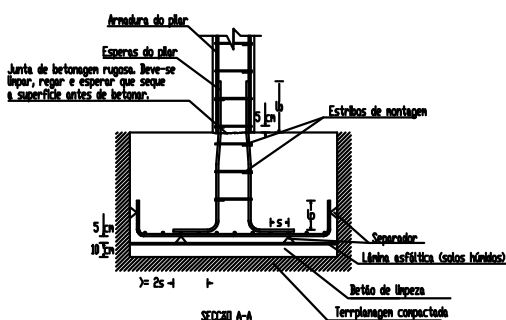
Sapata 16 Centrada
Pilar 75
Dimensões: 145x120x30 Ang: 0°
A: I: 8ø12//15(20P+135+20P) (11,109)
B: I: 8ø12//20(20P+110+20P) (11,134)



Sapata 17; 18 Centrada
Pilar 66; 52
Dimensões: 420(126+170+124)x255x65 Ang: -63°
A: I: 9ø25//30(25P+410+25P) (18,238)
S: 9ø25//30 (410)
B: I: 3ø25//30(25P+245+25P) (18,61)
I: 13ø25//10(25P+245+25P) (61,191)
I: 2ø25//30(25P+245+25P) (19,230)
I: 7ø25//20(25P+245+25P) (230,360)
I: 2ø25//25(25P+245+25P) (360,402)
S: 14ø25//30 (245)



Pormenor de ligação
Sapata isolada - pilar centrado
Sem Esc.



MATERIAIS

- AÇOS**
-Armaduras ordinárias: A400NR
- BETÕES**
-Fundações:C25/30
-Linteis de fundação:C25/30
-Muros de cave:C25/30
-Pilares, vigas e lajes:C25/30
- ARGAMASSAS**
-Assentamento de Tijolo Furado em Pano de Alvenaria: 400kg de cimento / 1000 l de areia
- RECOBRIMENTO**
-Linteis de fundação:5cm
-Muros de cave:4cm
-Pilares, vigas, lajes:2,5cm
-Sapatas:5cm

Hotel Henriques

Localização - Belmonte

Designação - Sapatas de Fundação
Cota -3,50 m

Autor - Daniela Alexandra Ribeiro Lopes nº 25585

Universidade da Beira Interior - UBI - Projeto de Mestrado | Projeto de Estabilidade I 5º Ano | 2014 - 2015

Estado do Projeto - Entrega Final

Escala - 1/100

Data - Outubro, 2015

Desenho - nº 08