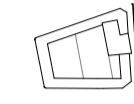
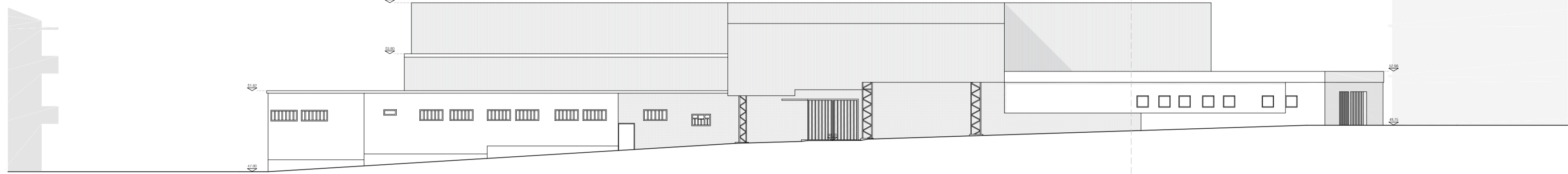
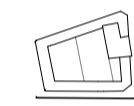
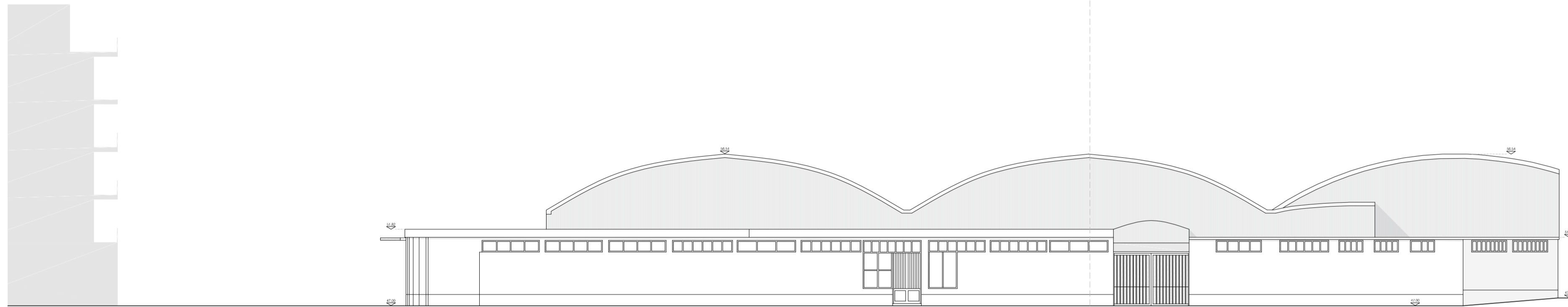


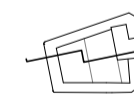
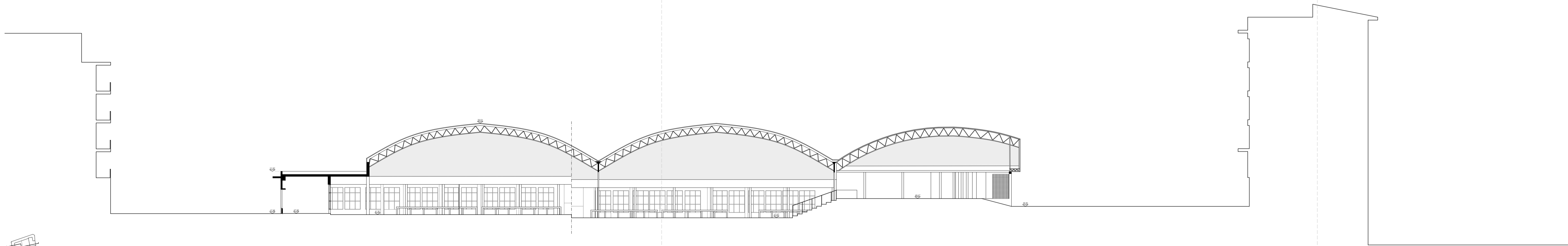
Alçado Norte - Existente



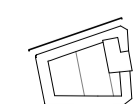
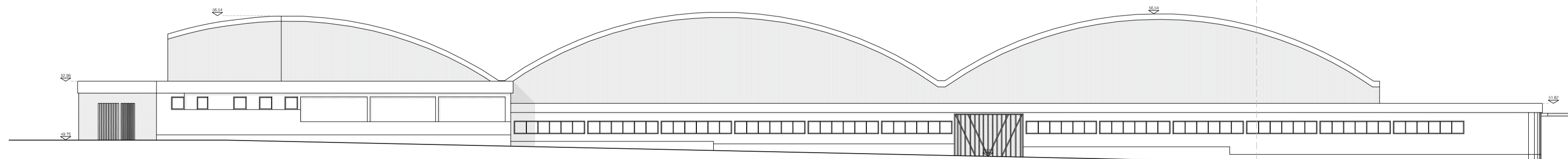
Alçado Sul - Existente



Alçado Oeste - Existente



Corte 1 - Existente



Alçado Este - Existente

OBSERVAÇÕES:
COTA DE SOLEIRA 0.00 = 47,60 m



Projeto de Requalificação para o Mercado Municipal da Vila da Nazaré

OBJECTO:
Estado atual - Alçados e Corte 1
ESCALA 1/200
Joana Gonçalves

ABRIL 2017
Orientador:
Prof. Dr. Jorge Jular

DESENHO N.º

04