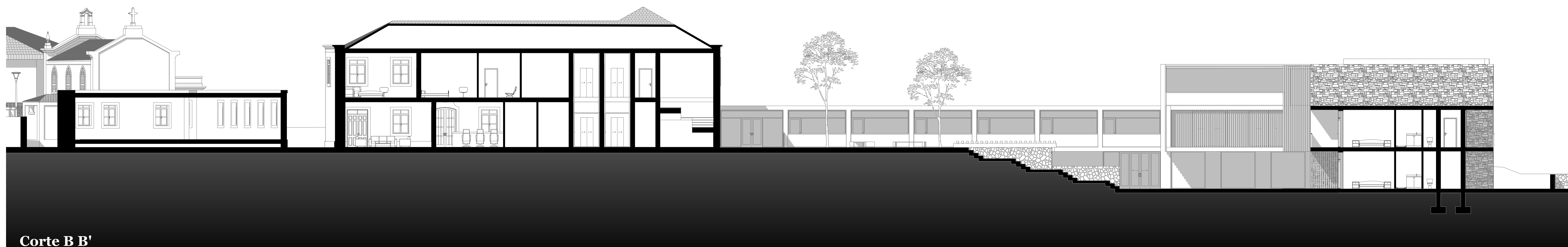
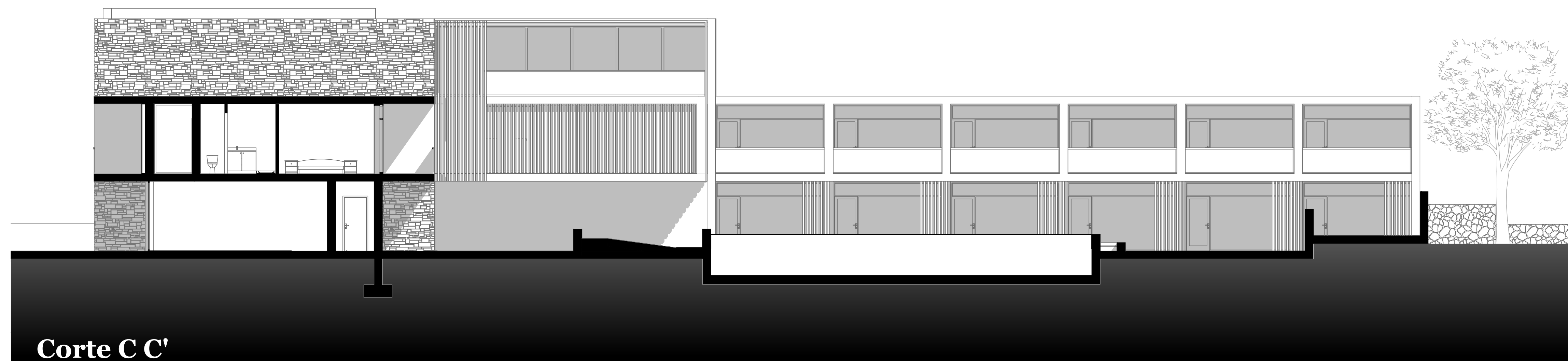


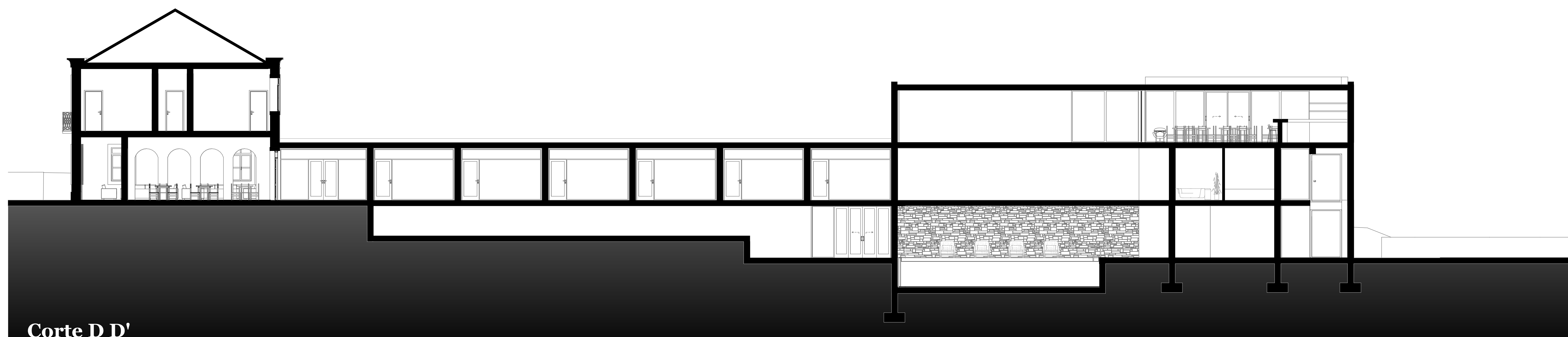
Corte A A'



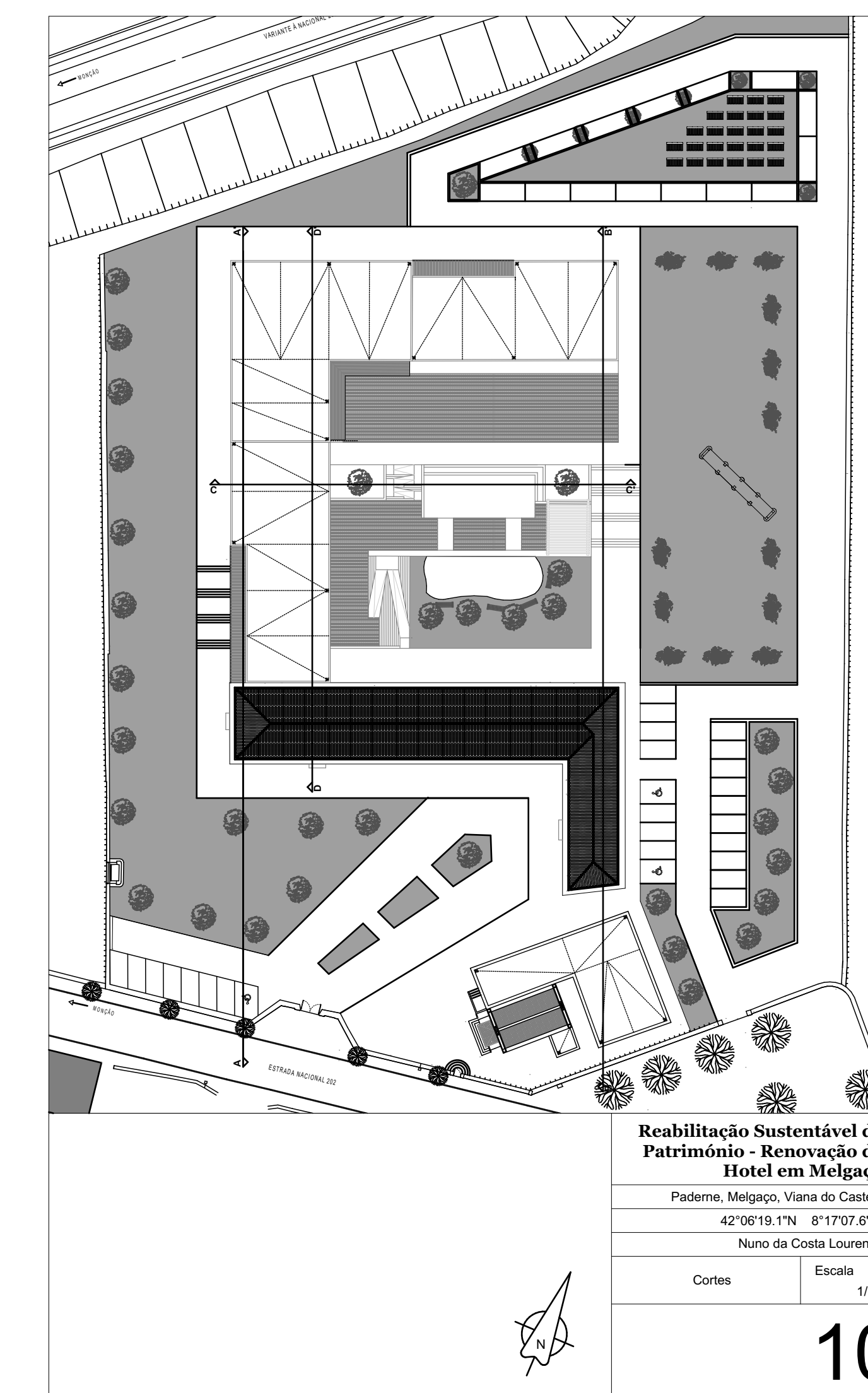
Corte B B'



Corte C C'



Corte D D'



Reabilitação Sustentável de  
Património - Renovação de  
Hotel em Melgaco  
Paderna, Melgaco, Vila do Castelo  
42°01'19.73" N 8°17'02.25" W  
Nuno da Costa Lourenço

Cortes Escala 1/100