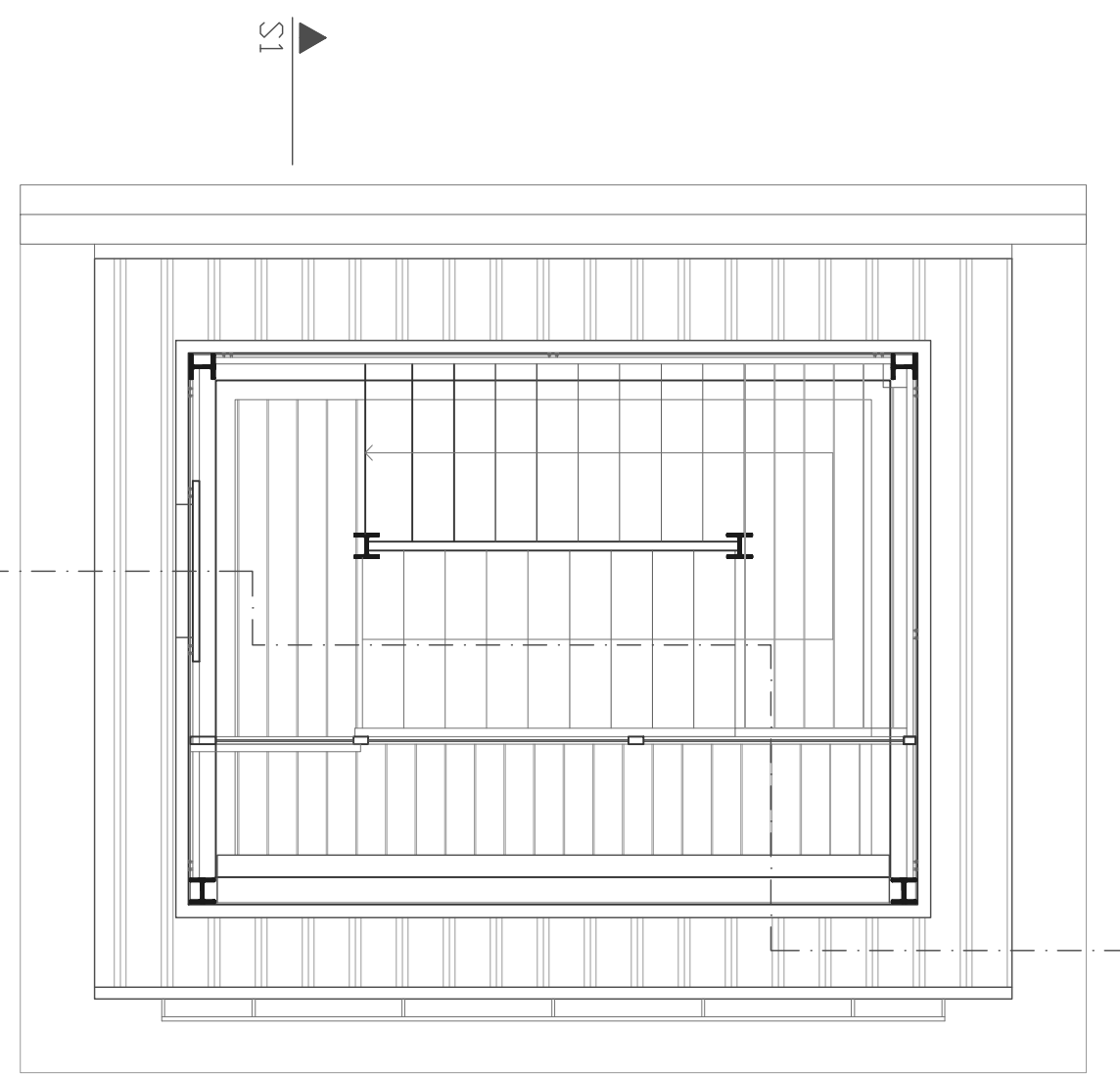
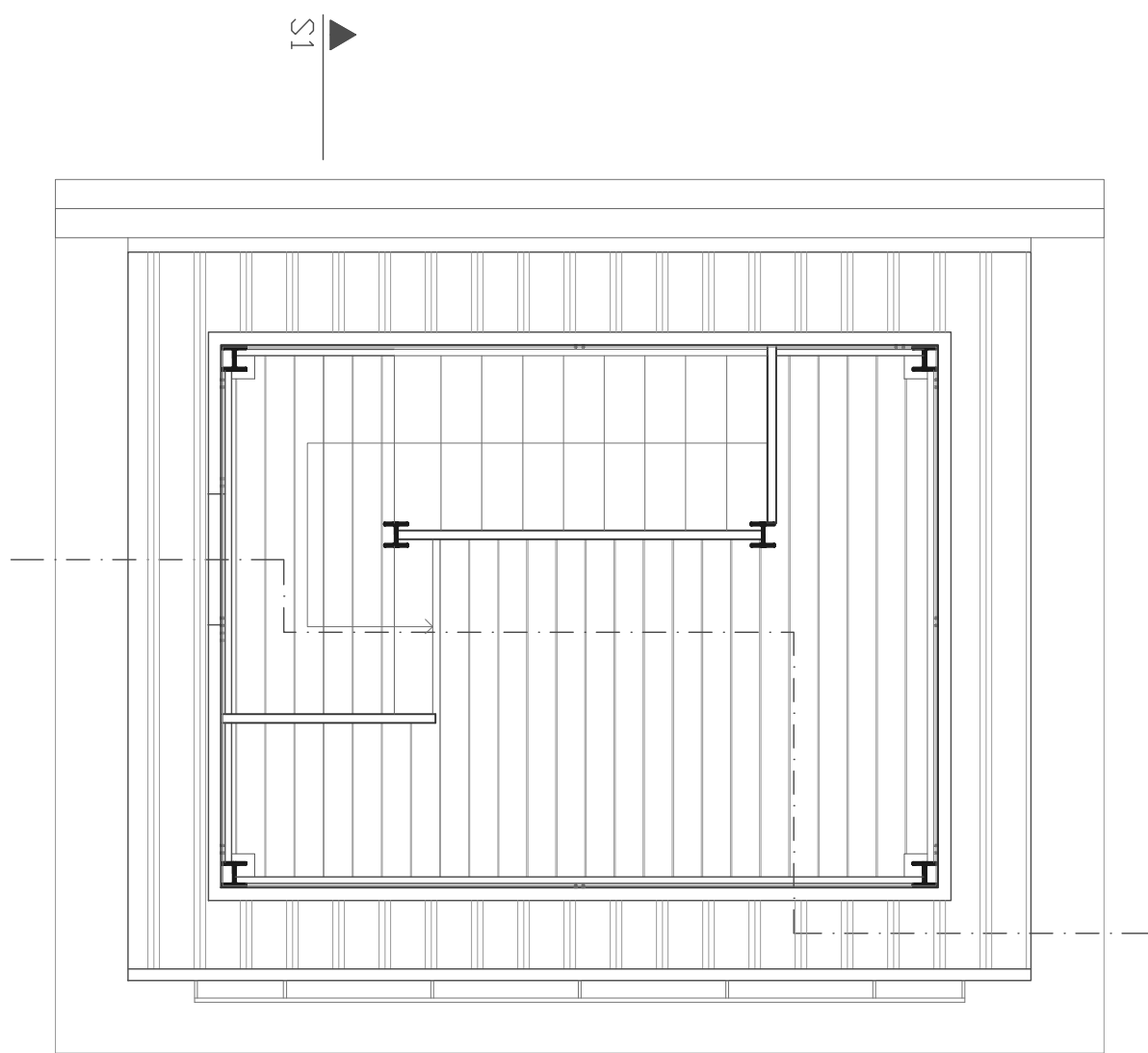


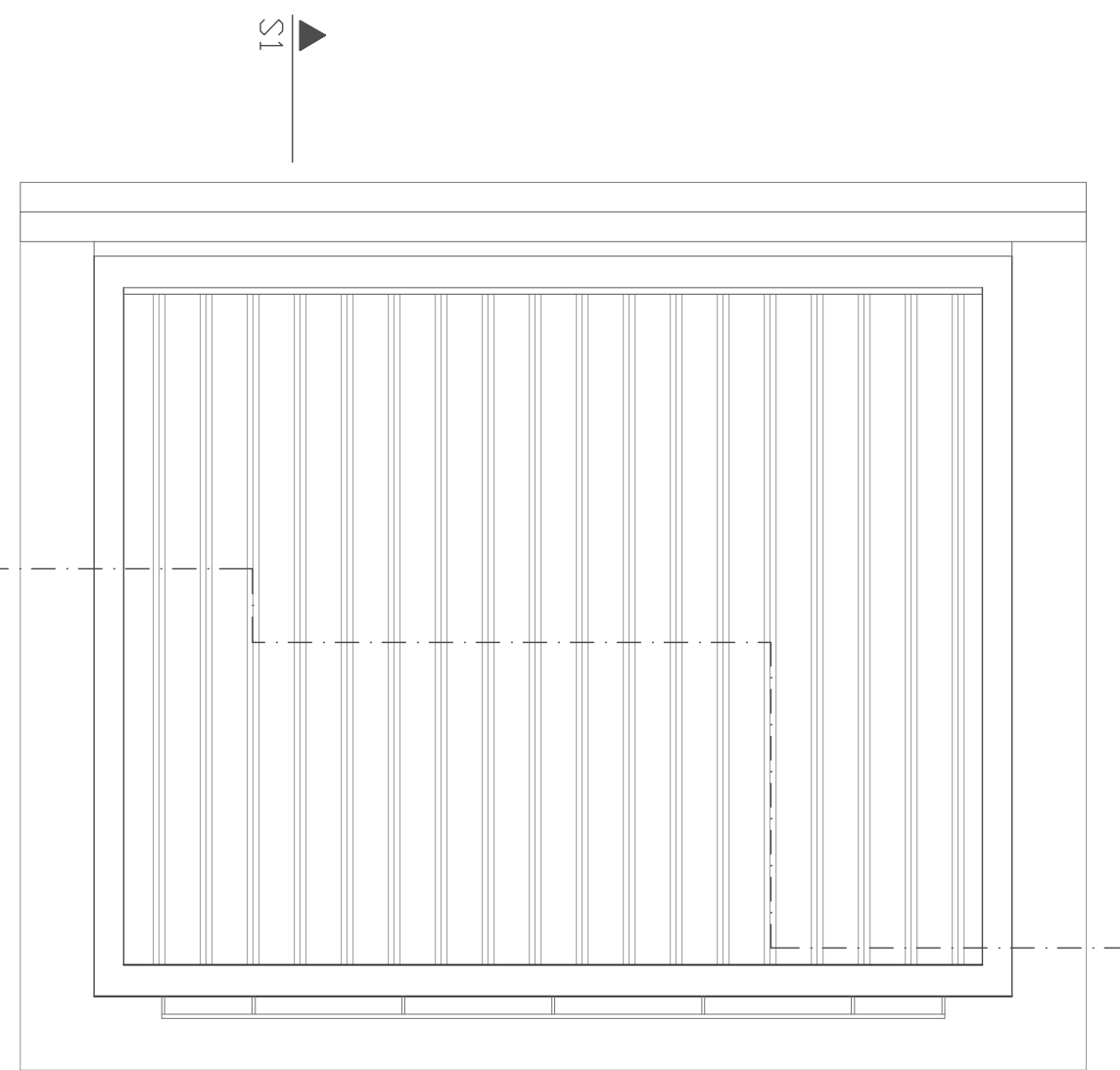
Planta do Piso 0
1/50



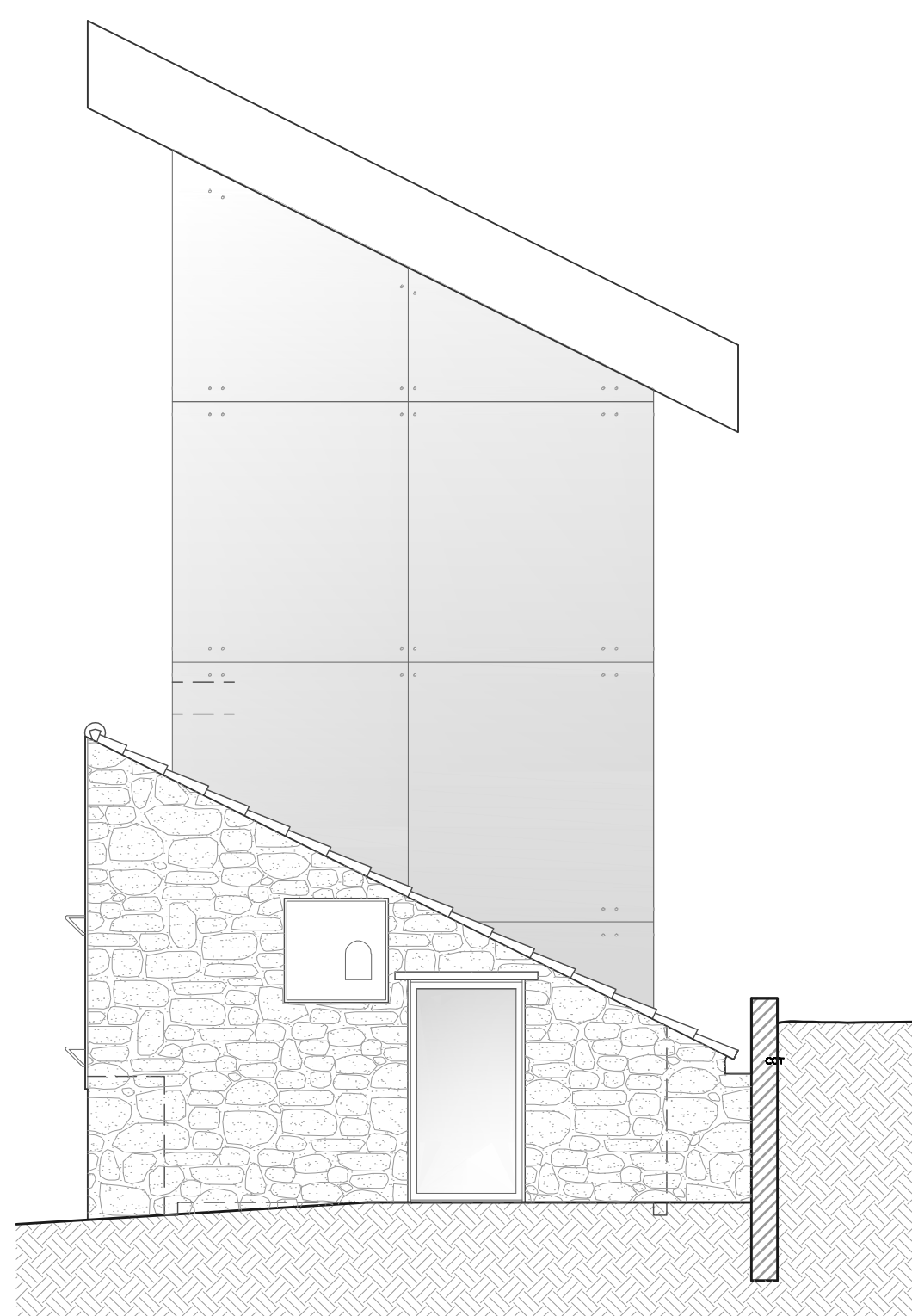
Planta do Piso 0 (plano alto)
1/50



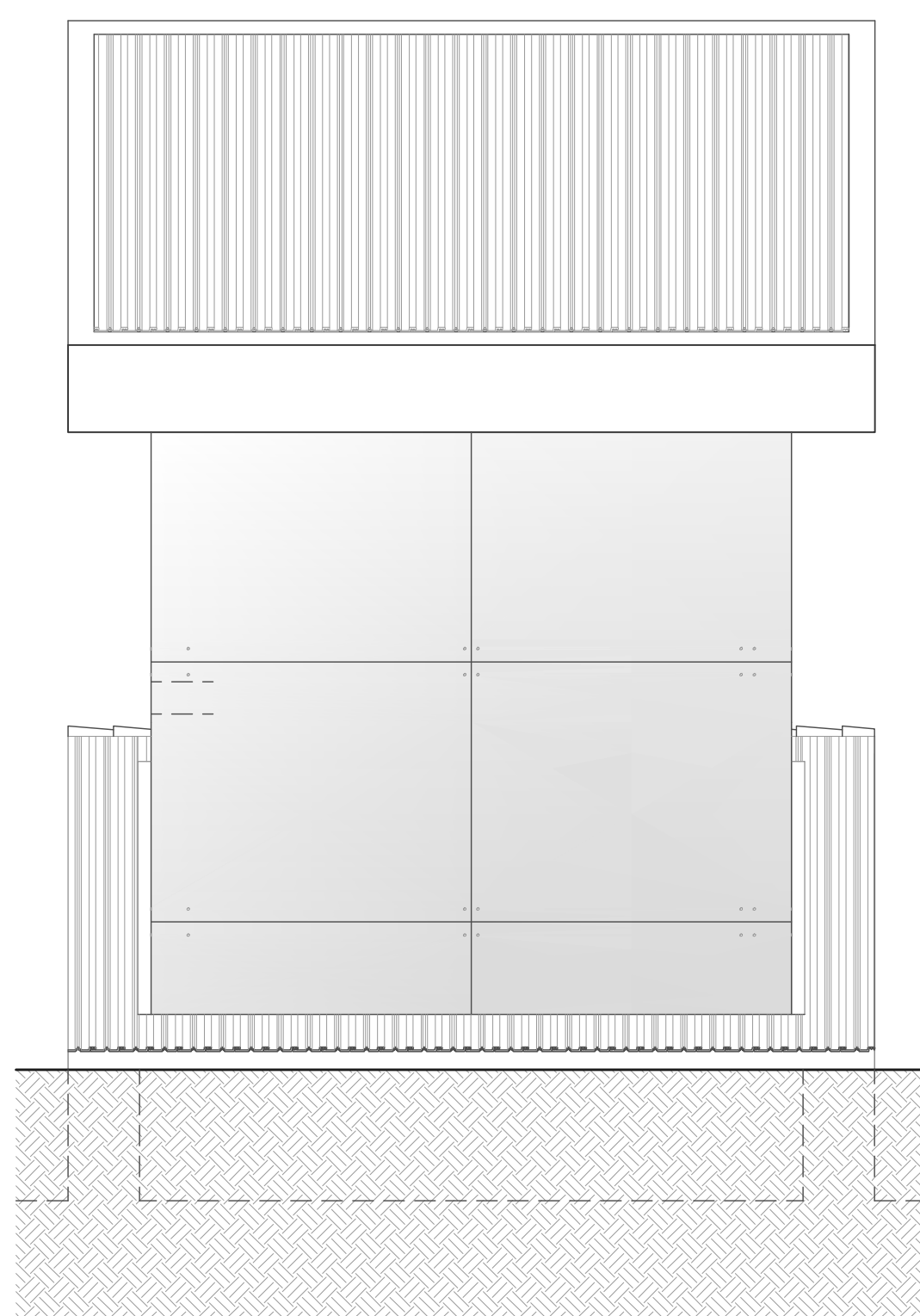
Planta do Piso 1
1/50



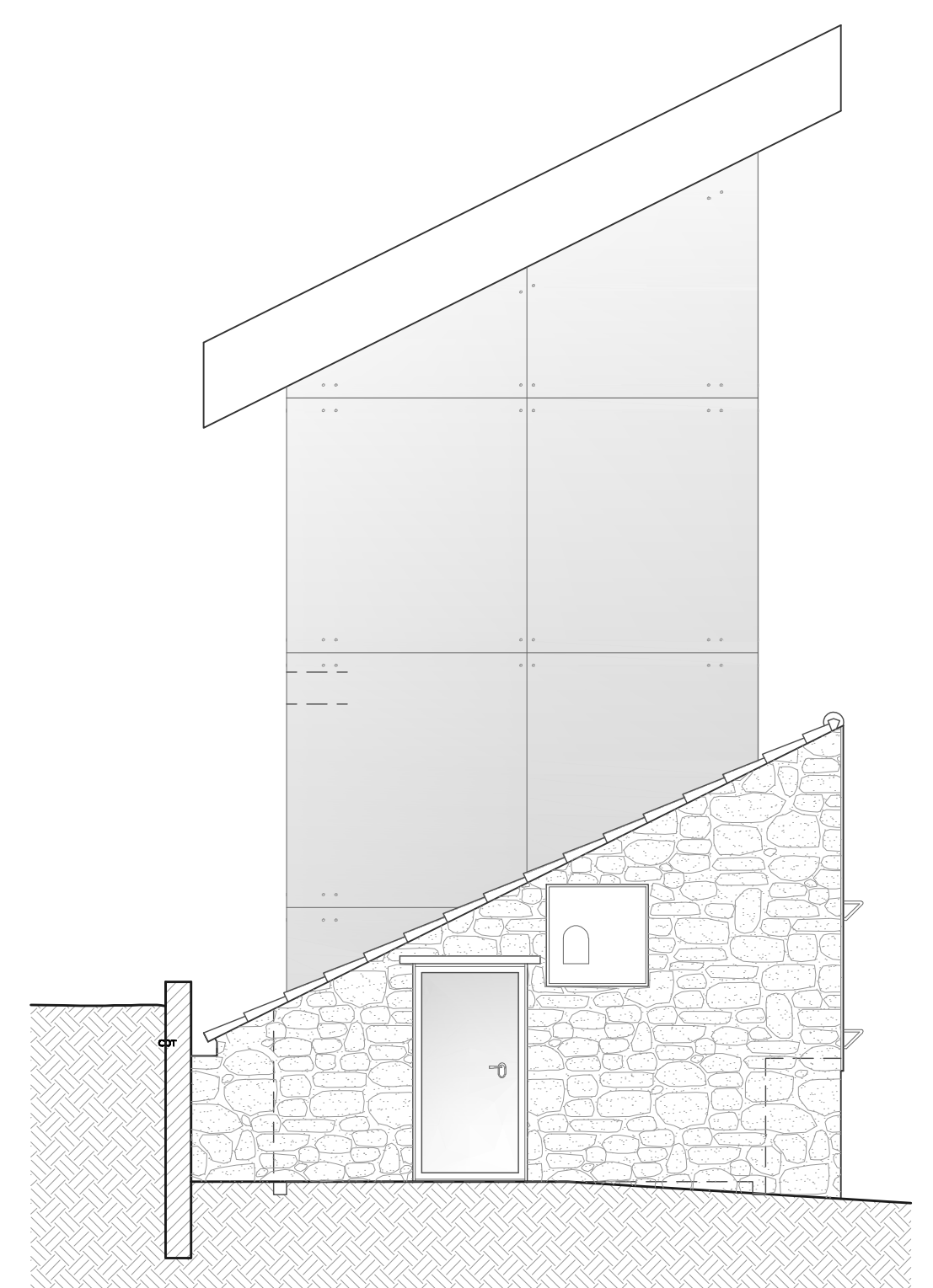
Planta da Cobertura
1/50



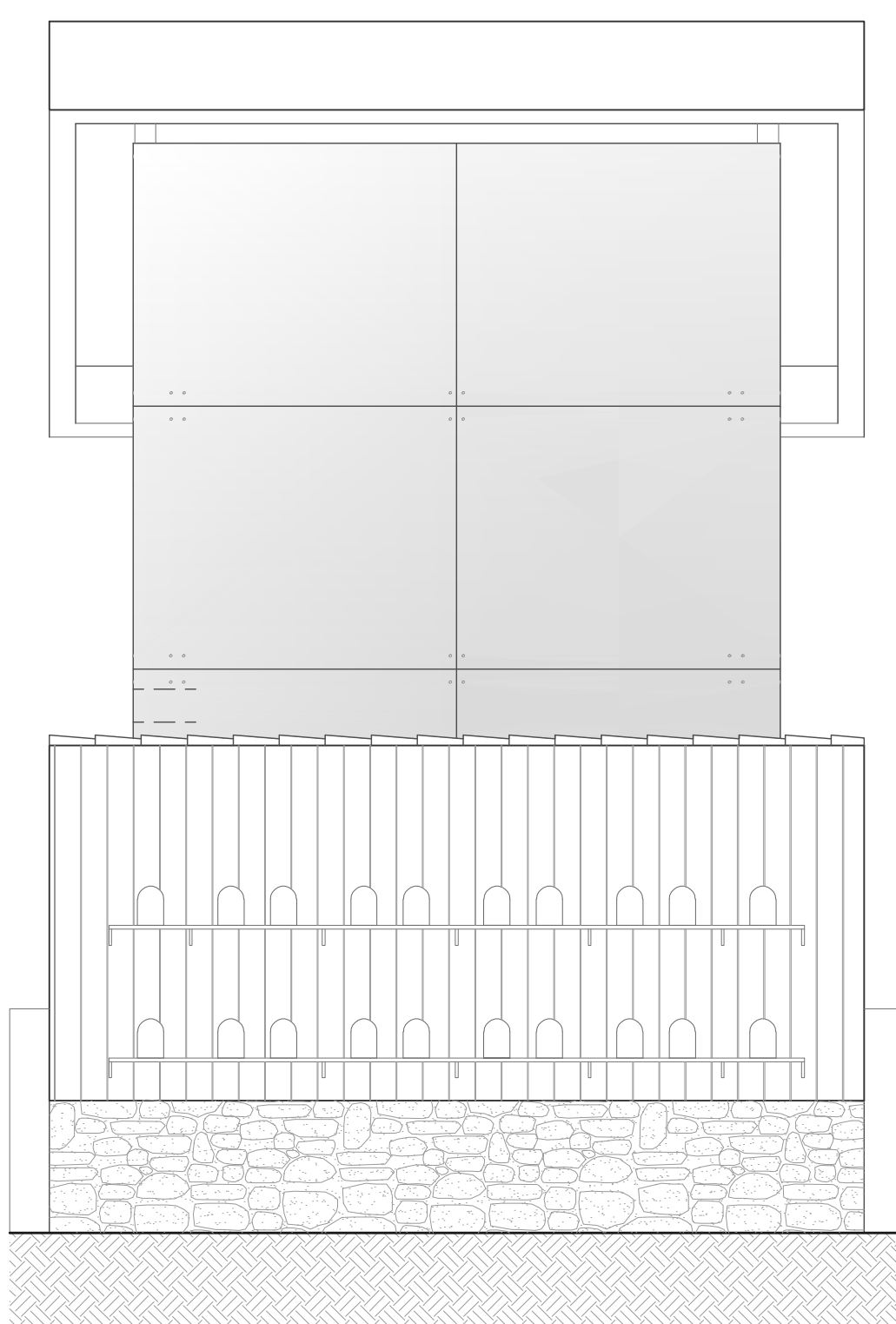
Alçado Posterior
1/50



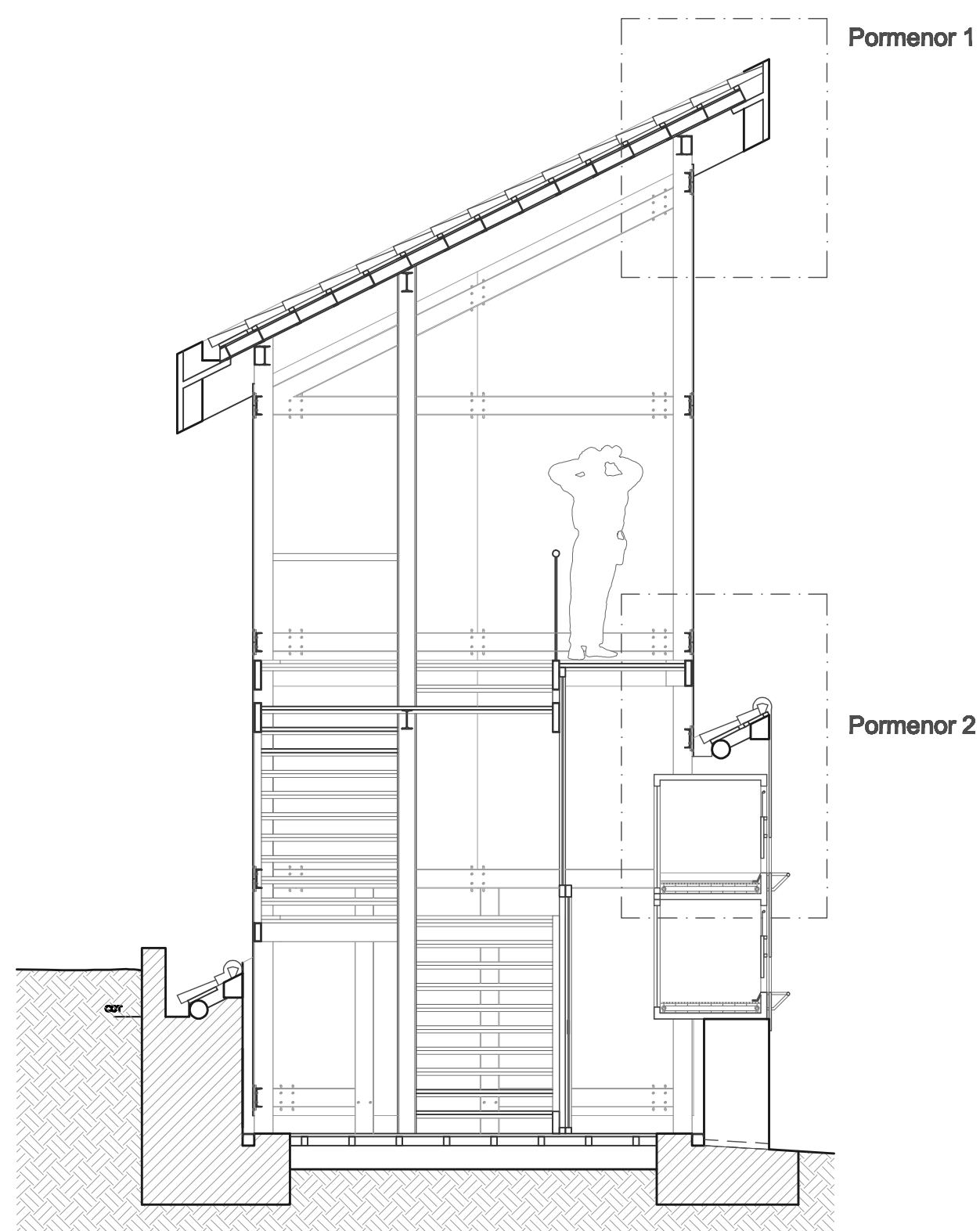
Alçado Lateral Direito
1/50



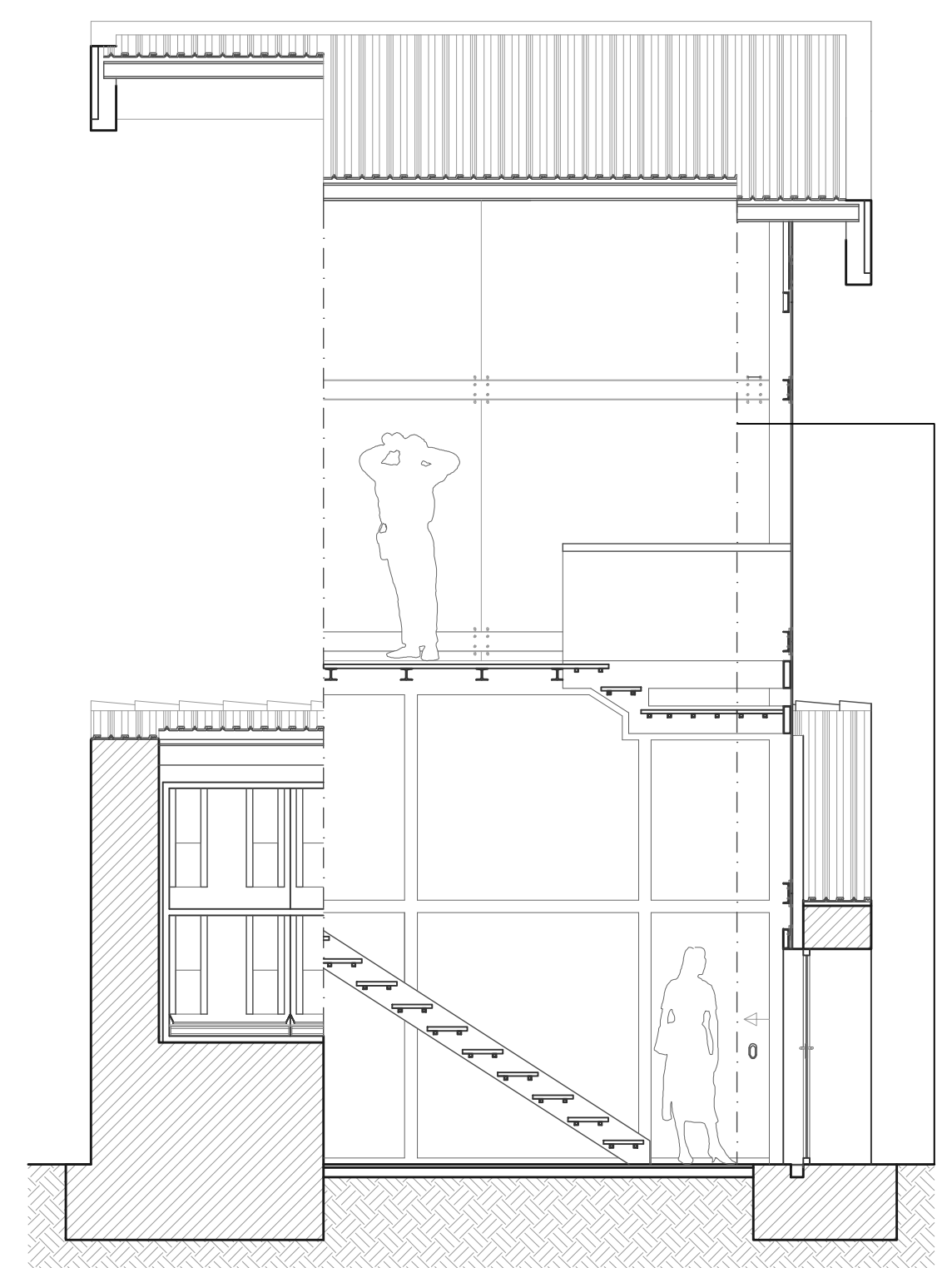
Alçado Principal
1/50



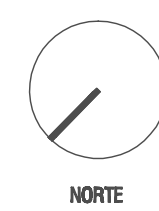
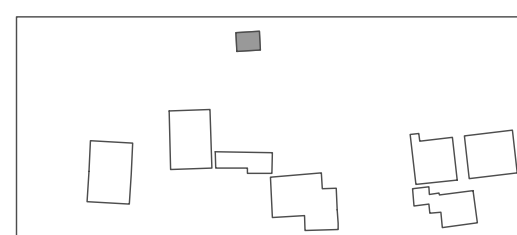
Alçado Lateral Esquerdo
1/50



Secção 1
1/50



Secção 2
1/50



N.º e nome de aluno: 18948 MAXIMINO MIGUEL TAVARES BIDARRA
UNIVERSIDADE DA BEIRA INTERIOR
Mestrado Integrado em Arquitectura
DISSERTAÇÃO / PROJECTO
2008 / 2009

NÚCLEO INTERPRETATIVO DE EXTRAÇÃO MINÉRA • GAA

Data: AGOSTO 09
Escala: 1:50
Desenho n.º:

Plantas, Alçado e Secção
Miradouro/Pombal

35