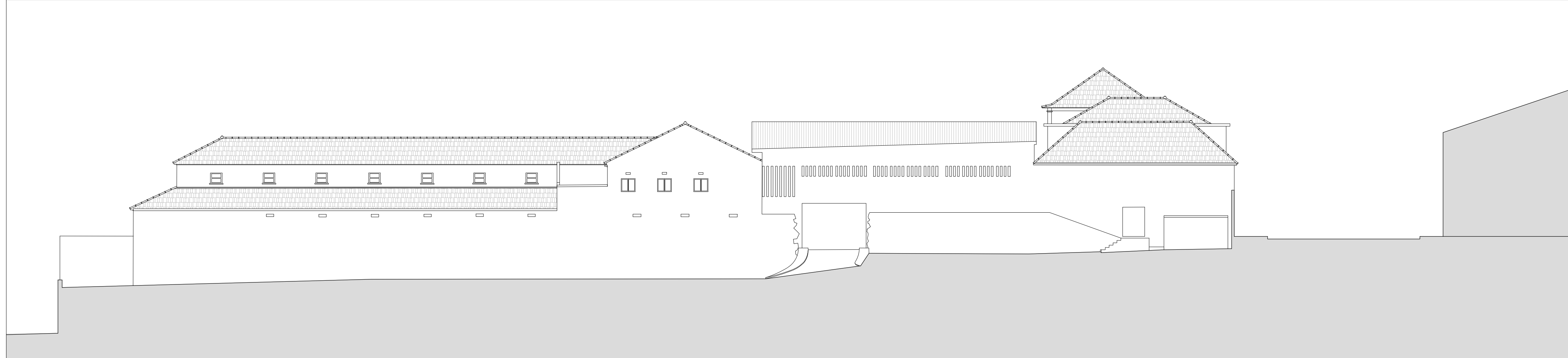
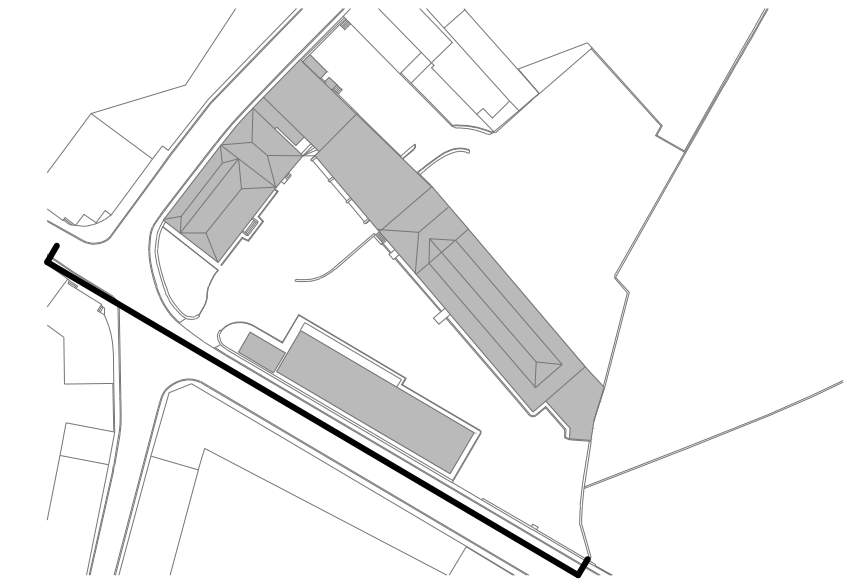
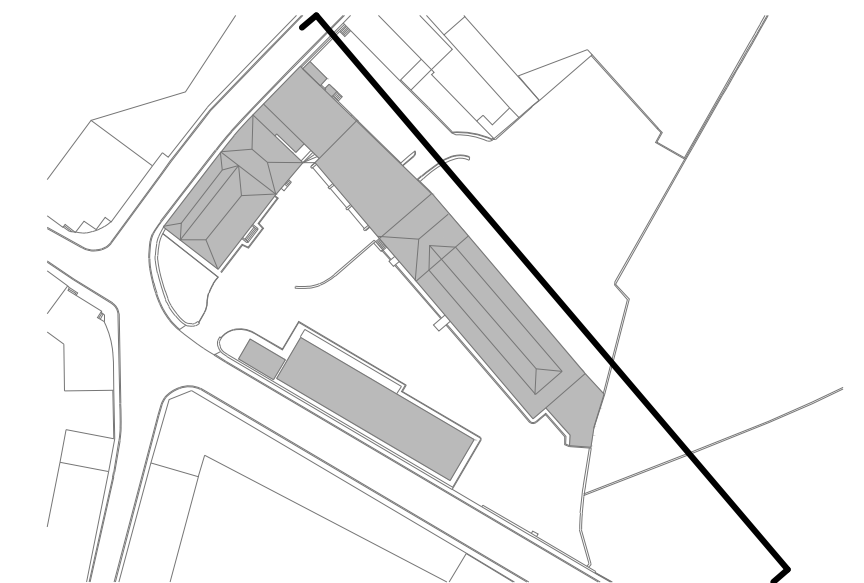




+99.90 m
 +96.50 m
 +95.26 m
 +93.91 m
 +93.19 m
 +89.66 m
 +88.21 m
 +87.65 m
 +86.88 m
 +85.13 m
 +84.66 m
 +84.23 m



+99.90 m
 +96.50 m
 +95.26 m
 +93.91 m
 +93.19 m
 +89.66 m
 +88.21 m
 +87.65 m
 +86.88 m
 +85.13 m
 +84.66 m
 +84.23 m



UNIVERSIDADE DA BEIRA INTERIOR – Mestrado Integrado em Arquitetura		LOCAL DA PROPOSTA: Vila Nova de Gaia	
ORIENTADORA: Inês Daniel de Campos		DESIGNAÇÃO DA FOLHA: Alçados – Existente	
AUTOR DA PROPOSTA: Renato Pinto Vasconcelos		ESCALA: 1:200	08

