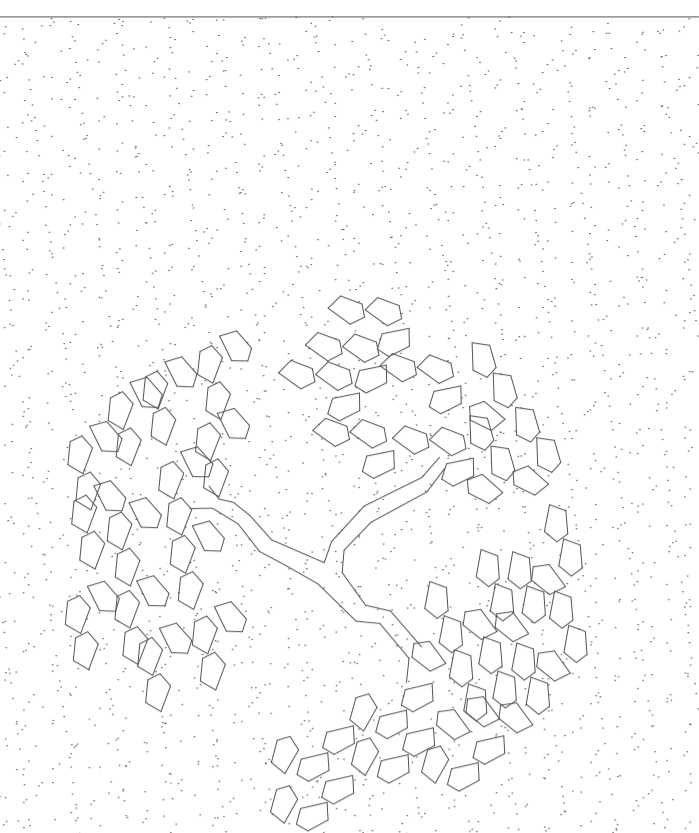
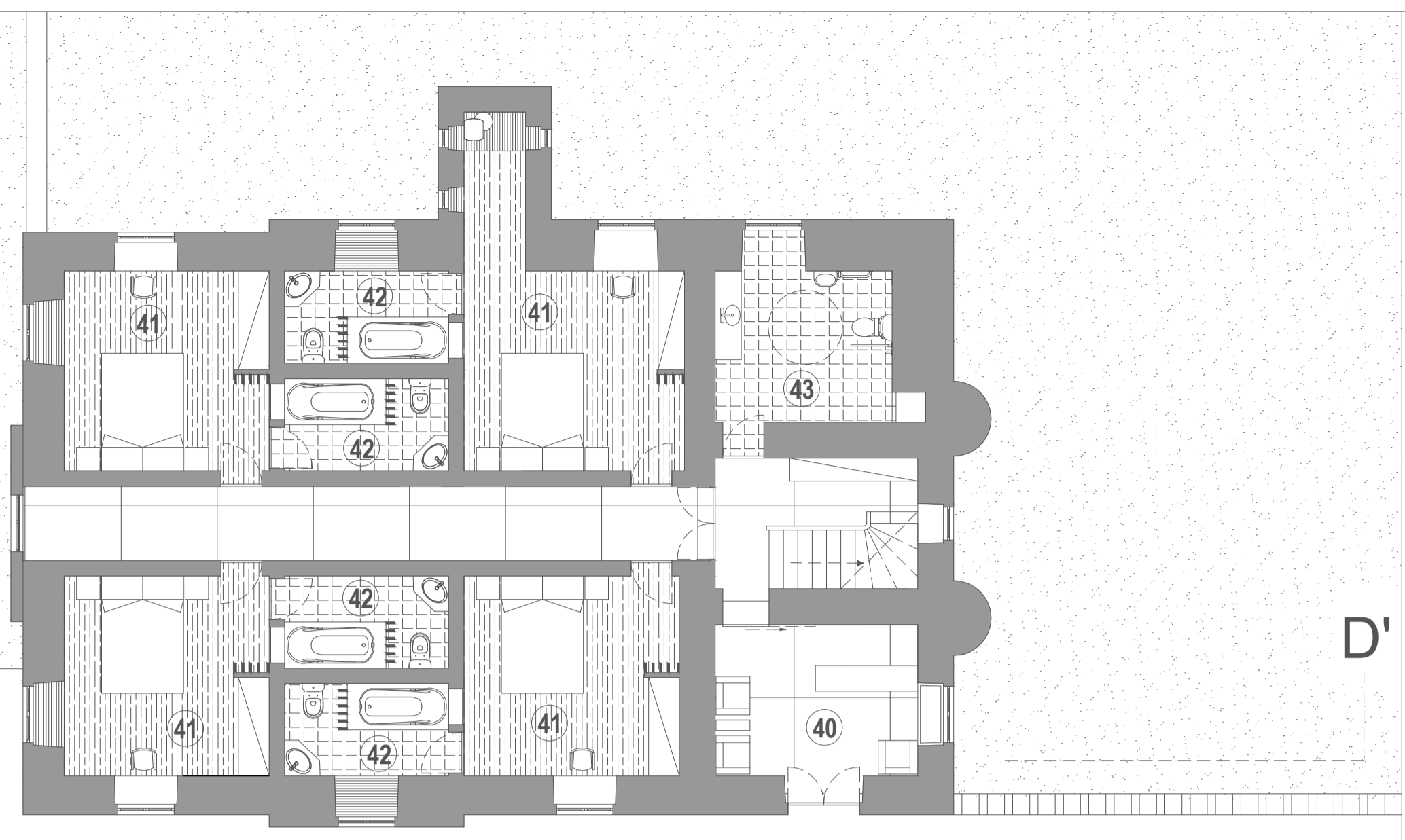


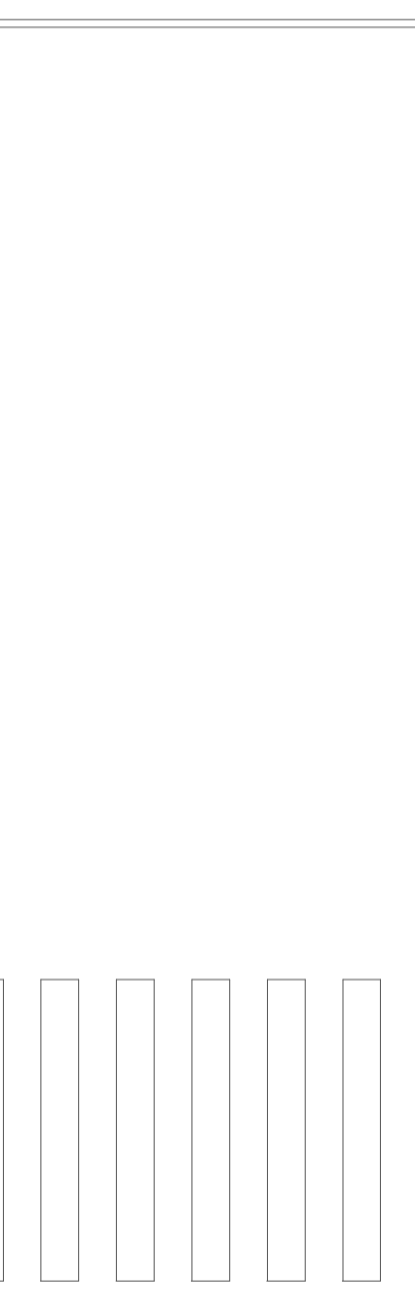
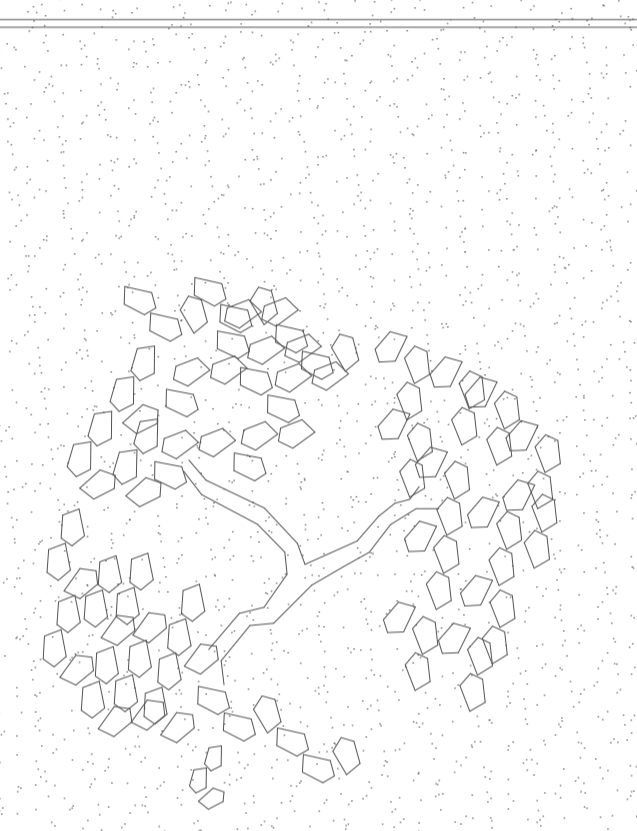
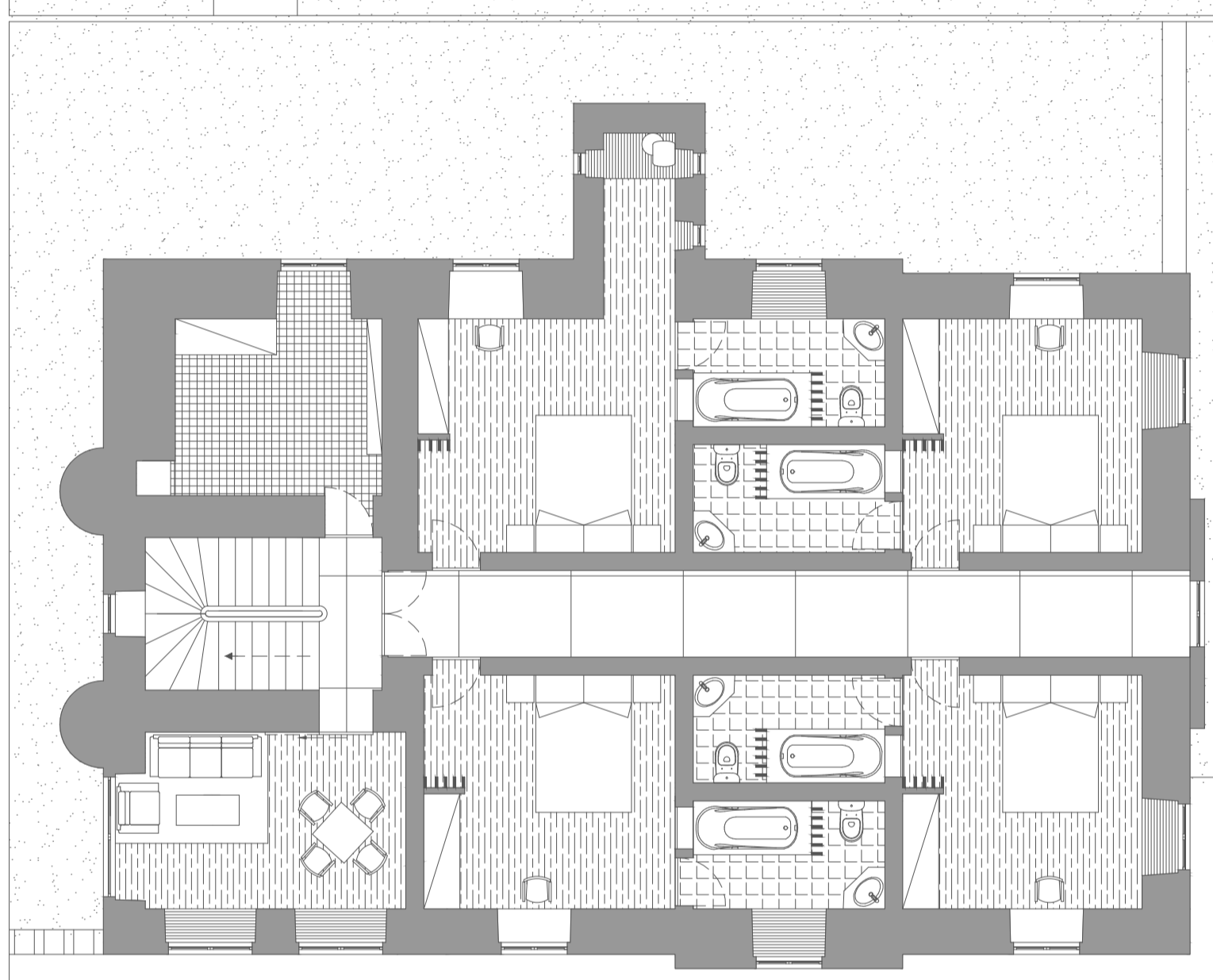
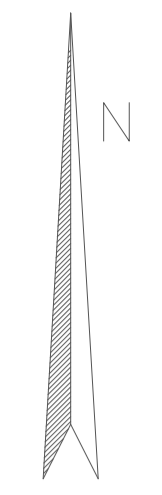
Planta do Piso 0



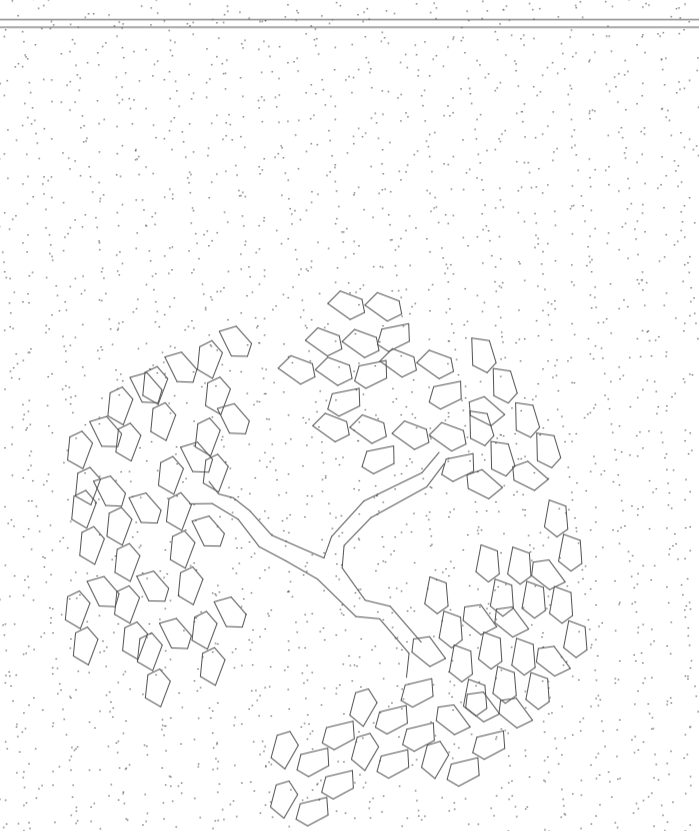
D



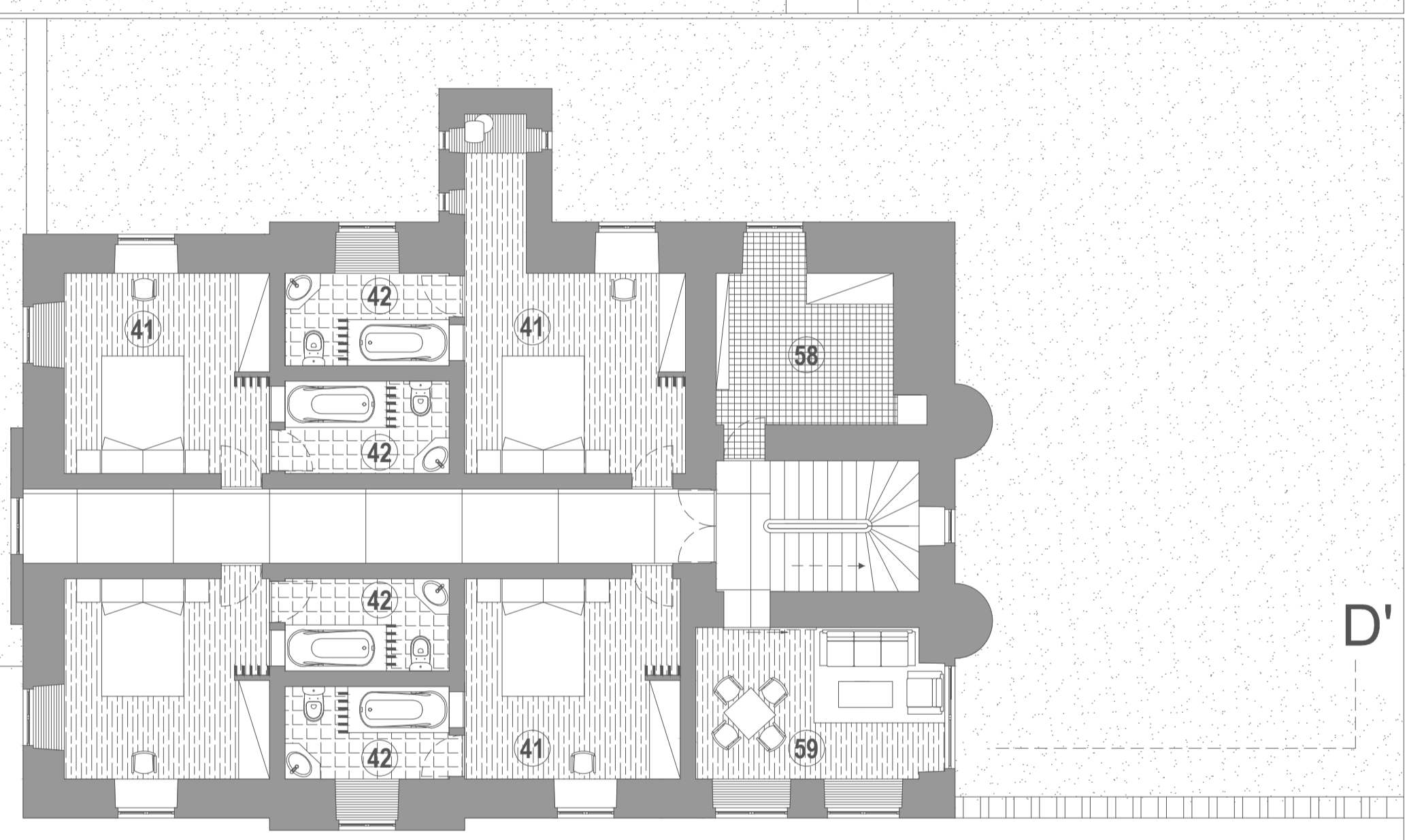
D'



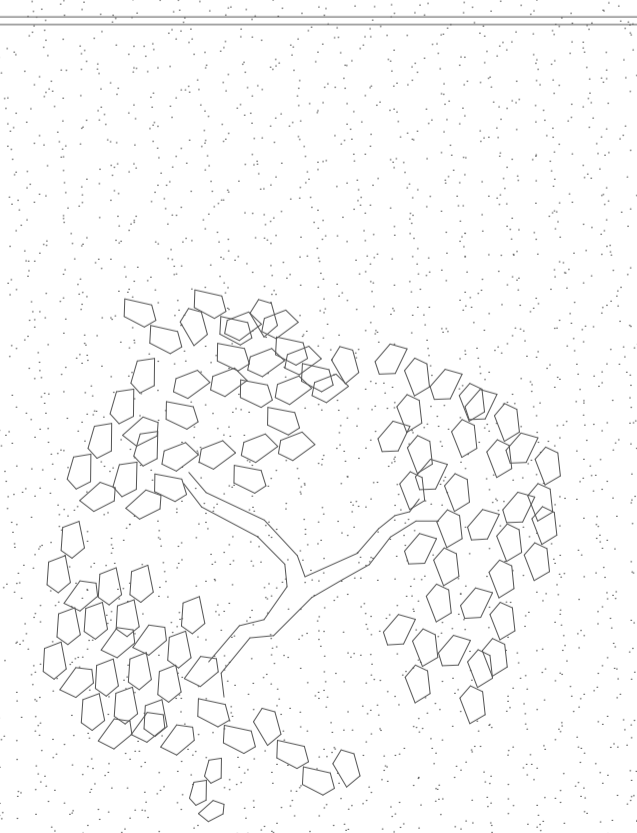
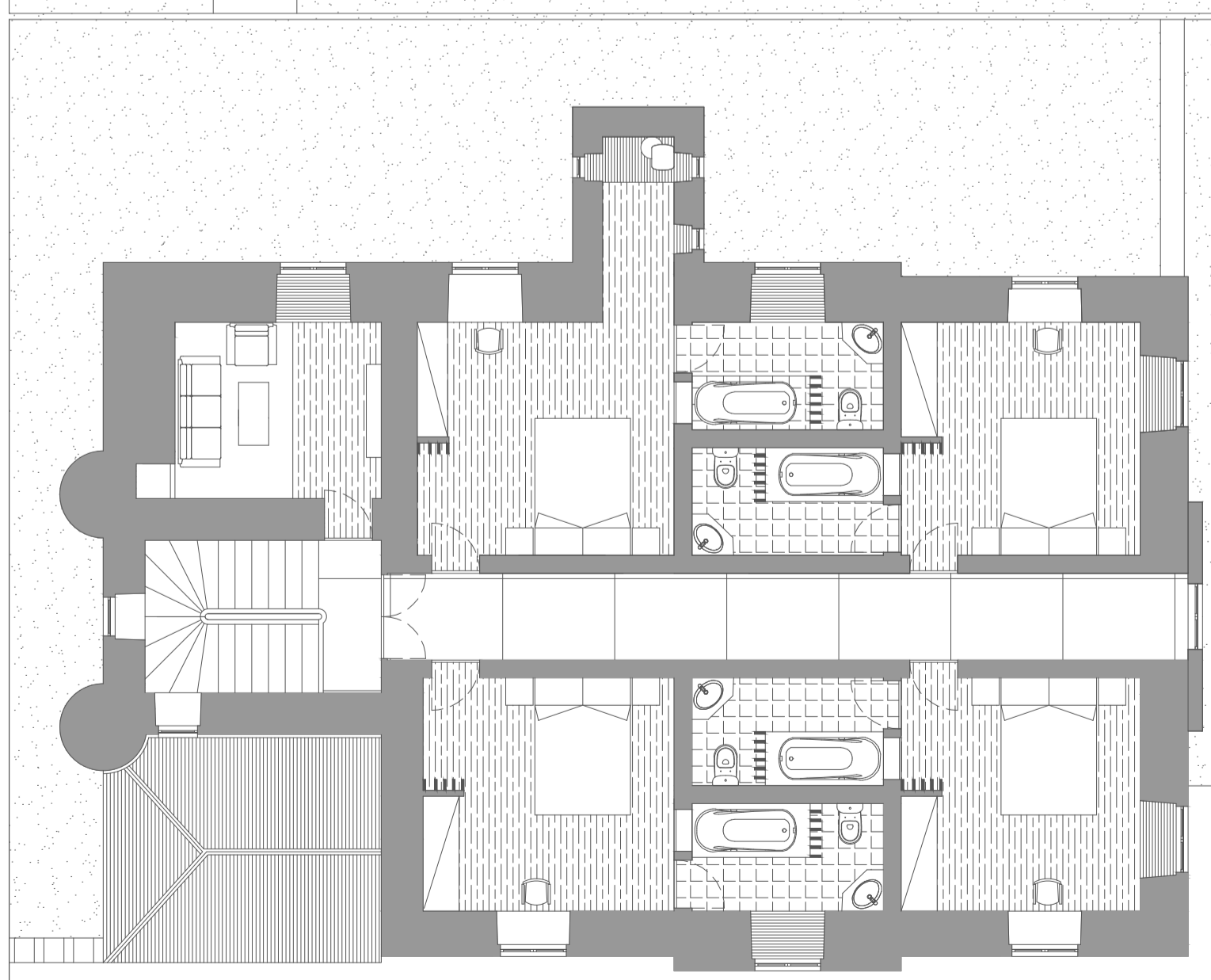
Planta do Piso 1



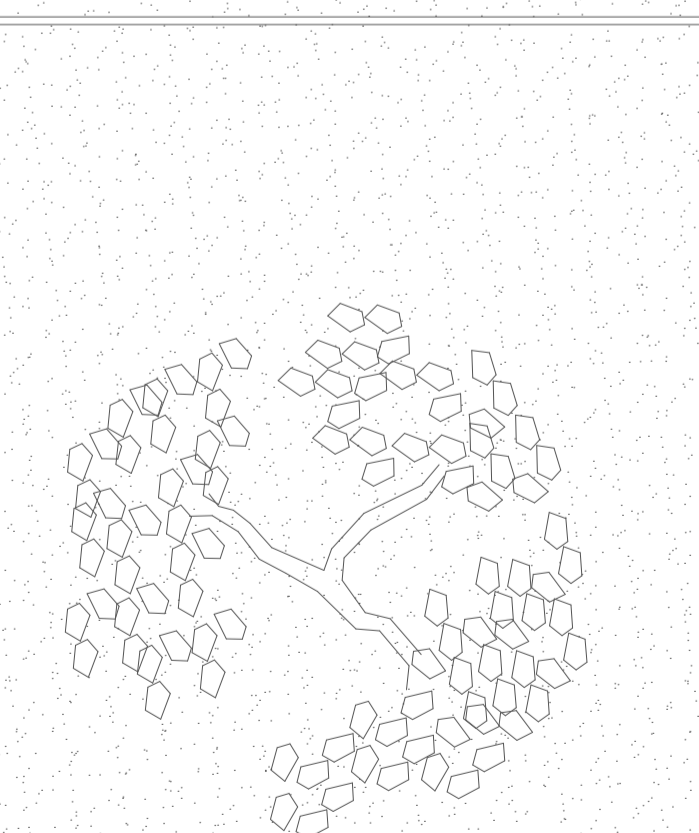
D



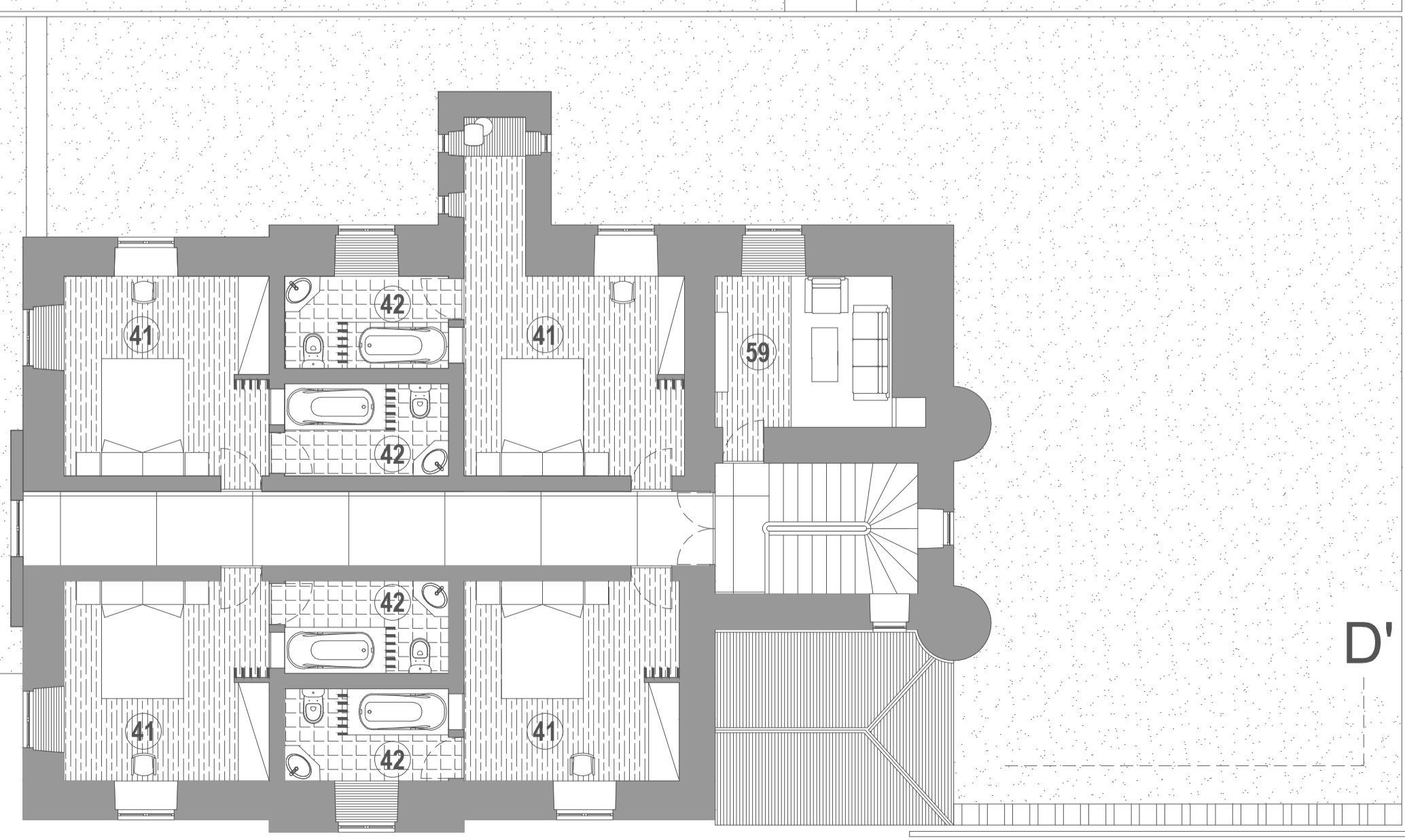
D'



Planta do Piso 2



D



D'

Legenda:

Hotel	
41 - Quartos	aprox. 16,40 m <sup>2</sup>
42 - Instalações Sanitárias	5,80 m <sup>2</sup>
58 - Económico	11,20 m <sup>2</sup>
59 - Sala de Estar	14 m <sup>2</sup>

Projecto: Requalificação das Termas do Vale dos Cúcos

Orientador: Professor Doutor Arquitecto Luís Miguel Moreira Pinto      Autor: Daniela Simões Santos

Universidade da Beira Interior, Outubro de 2014, Covilhã      Arquitectura

Designação: Plantas do Hotel      Escala: 1/100

Des. n.º  
7