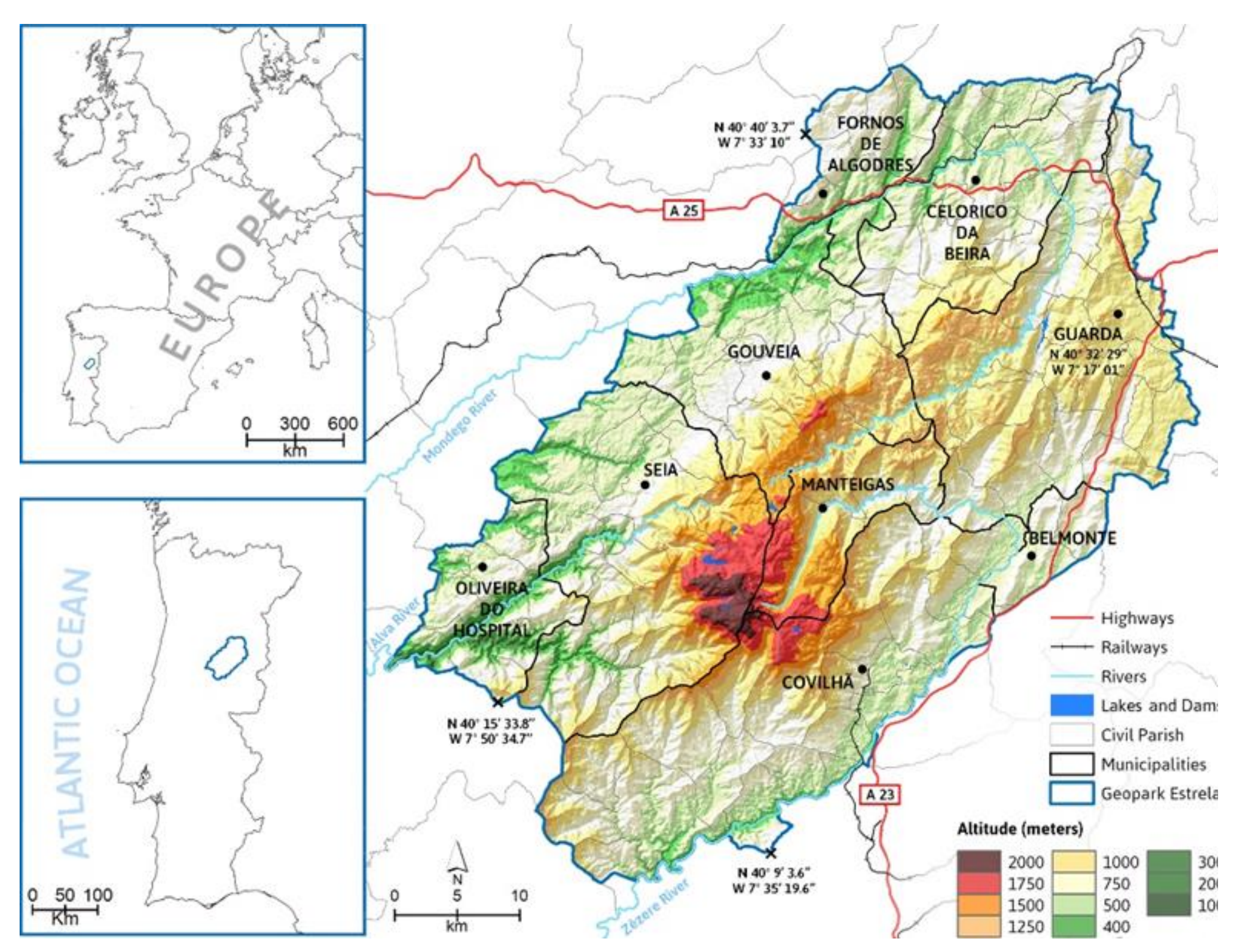


# Interpreting Late Pleistocene Paleoenvironments through the geosites of the Estrela Geopark, Central Portugal

Hugo Gomes <sup>1,2,\*</sup>, Fábio Loureiro <sup>1</sup>, Lucas Cezar <sup>1</sup>, Emanuel Castro <sup>1,3</sup> and Gonçalo Vieira <sup>1,4</sup>

Associação Geopark Estrela

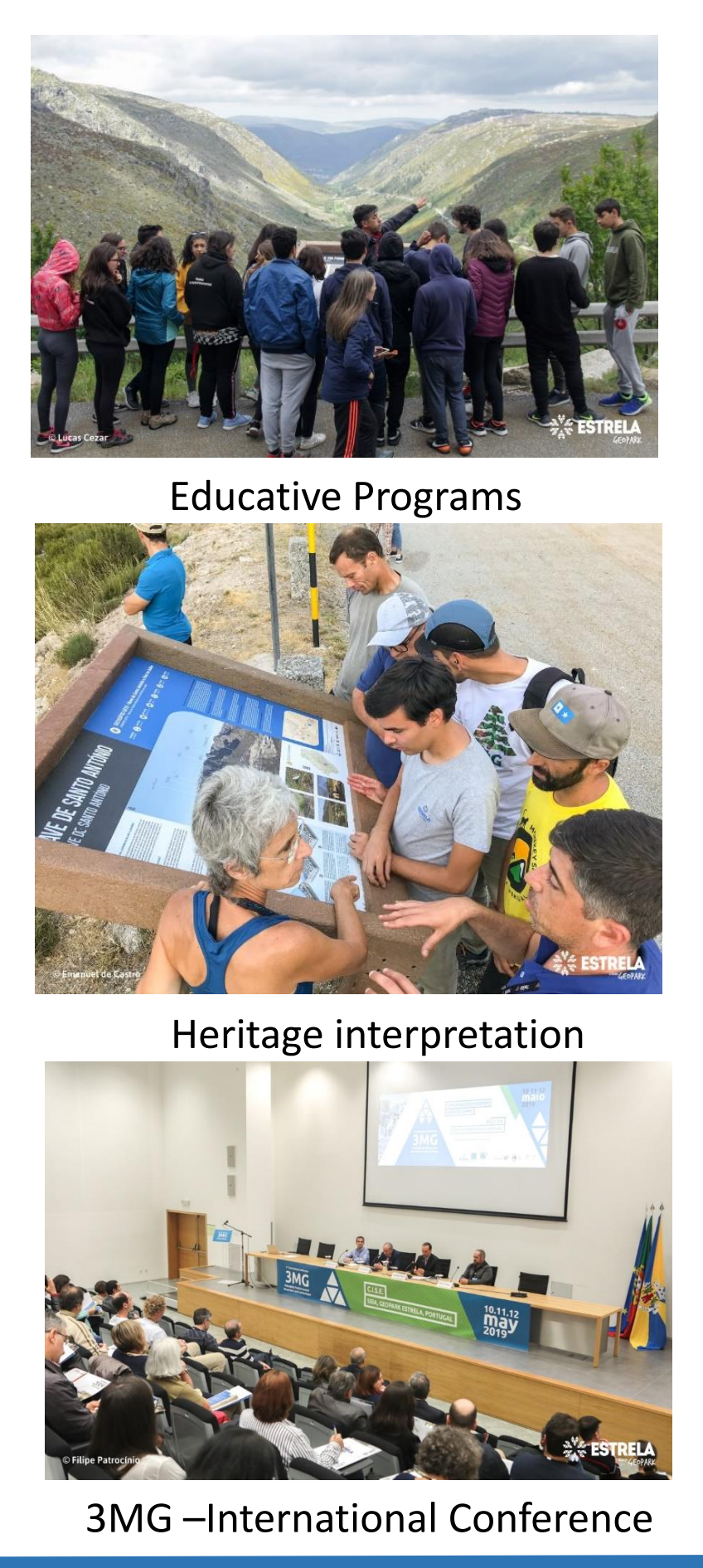
## Geopark Estrela Location



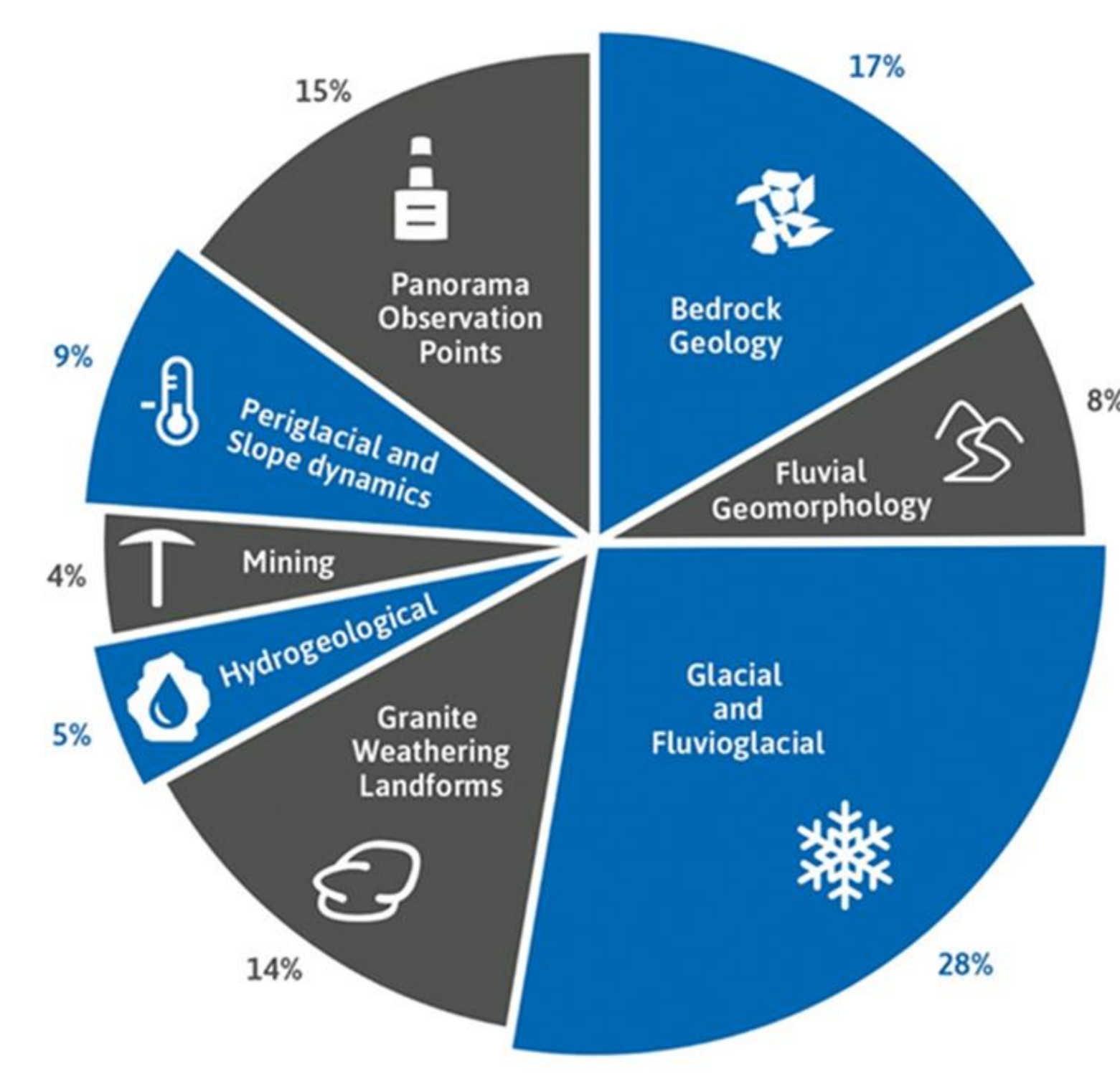
## Objetives



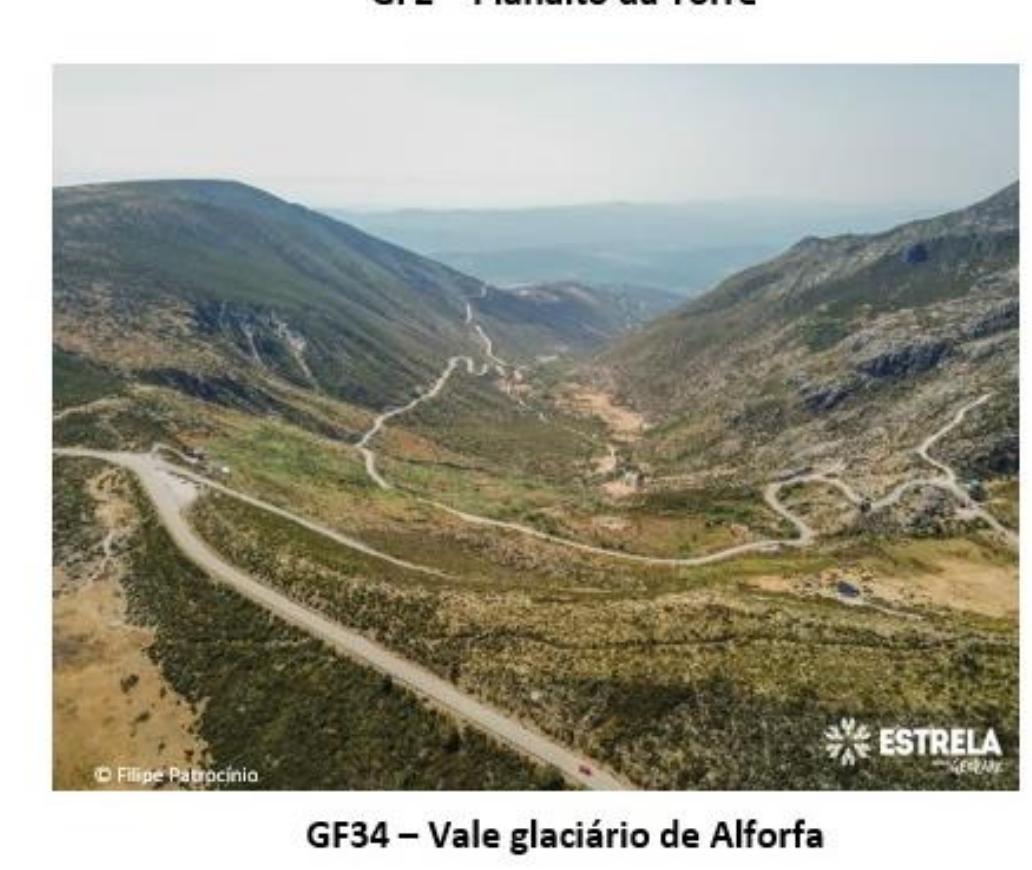
## Actions



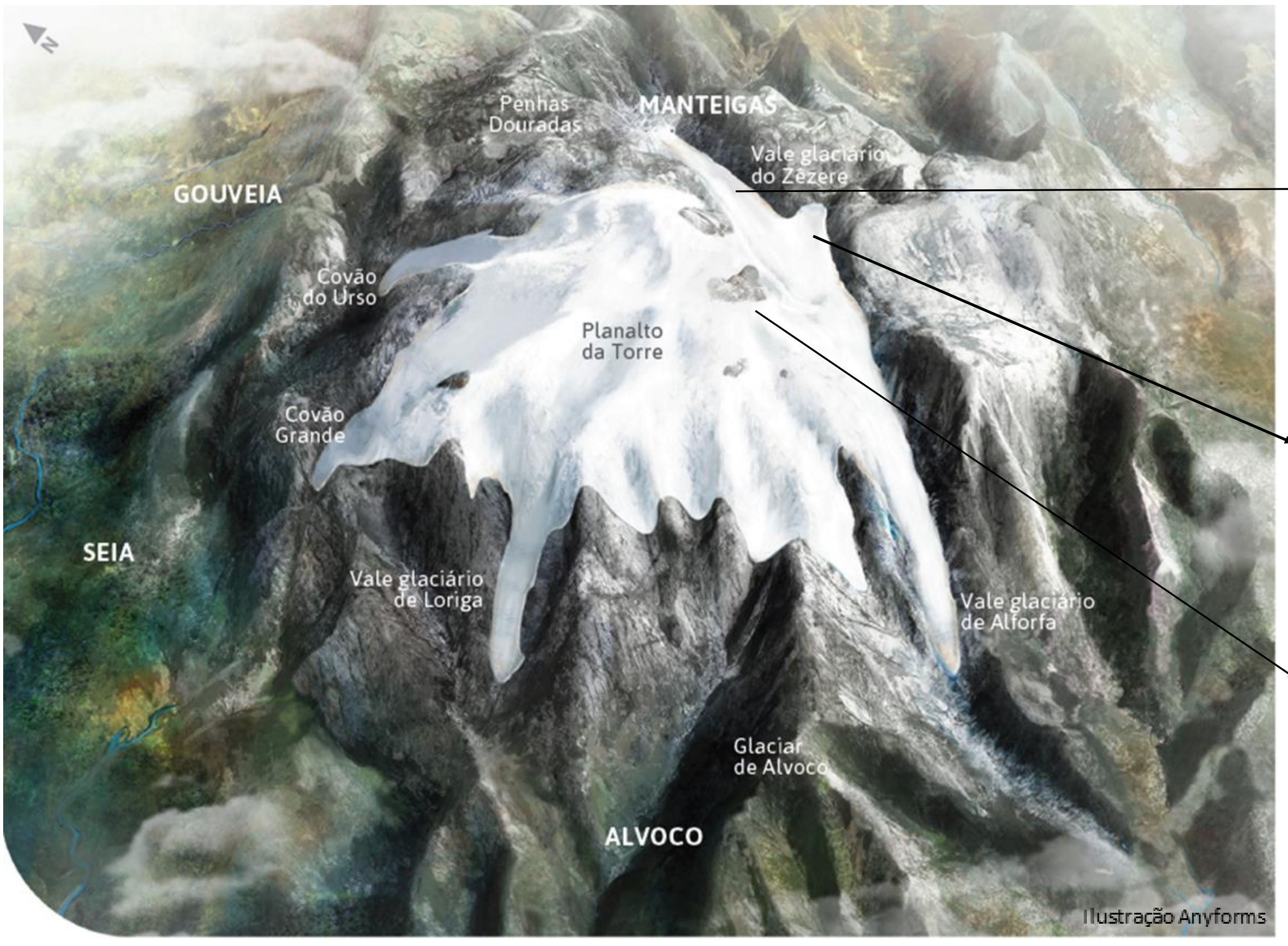
## Geopark Estrela Geoheritage



40% of 124 geosites related to Late Pleistocene Glacial, Fluvioglacial and Periglacial evidences



## International Relevance Geosites for Paleoenvironmental Reconstruction in Estrela Geopark



## Research projects Support



HOLMDRIVE (FCT Project 2018-2021)  
PHOTO: Filipe Patrocínio

