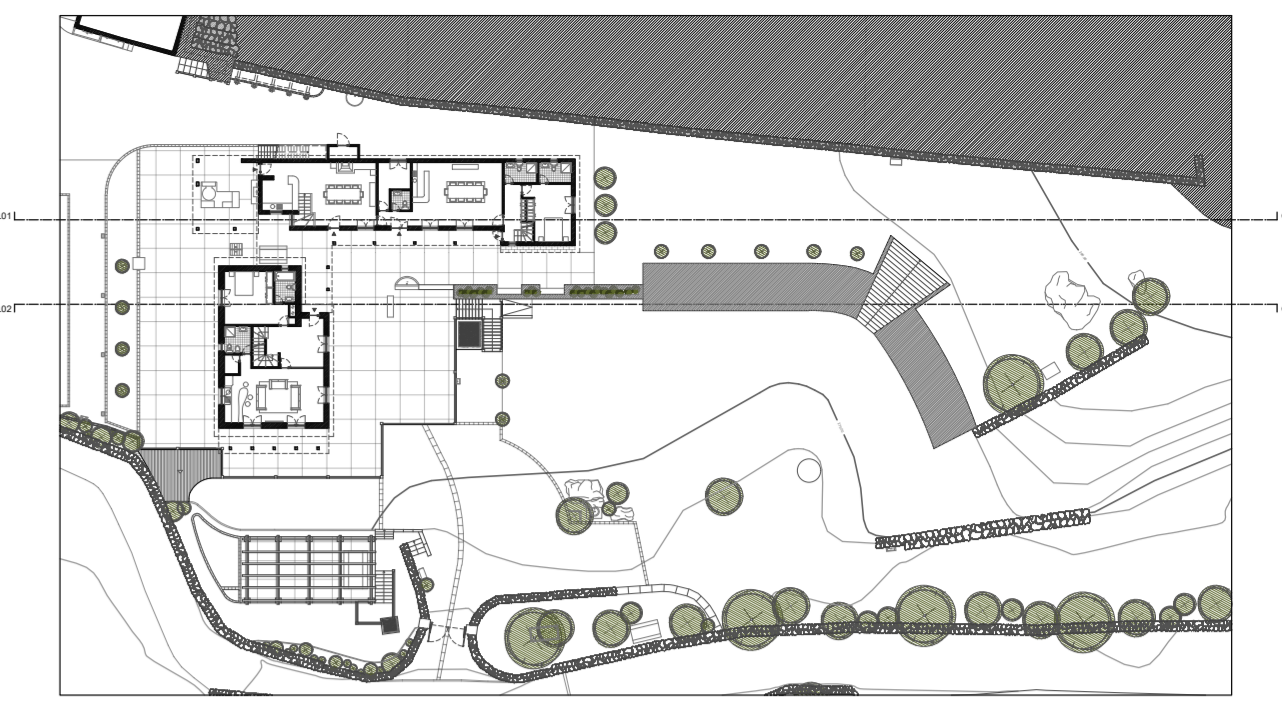


CORTE LONGITUDINAL - CL01









CORTE LONGITUDINAL - CL01 e CL02



CORTE LONGITUDINAL - CL02

LEGENDA DE TRAMAS

-  Muro de Pedra
-  Terreno em corte
-  Parede em corte
-  Granito
-  Xisto
-  Gabião

NOTAS

- Equidistâncias das curvas de nível - 1 metro
- Cota de soleira 0.00 = 278.40

Ecotermas Rurais
Um novo conceito para o termalismo do futuro - Vale do Côa

Objeto: Levantamento Arquitetónico - Corte Longitudinal 01 e 02

Local: Quintãs, Longroiva, Méda

Autor: Hélio Pereira Nº: 27002

Escala: 1:100 Data: Setembro 2020

Desenho nº:

ARQ_LA_08