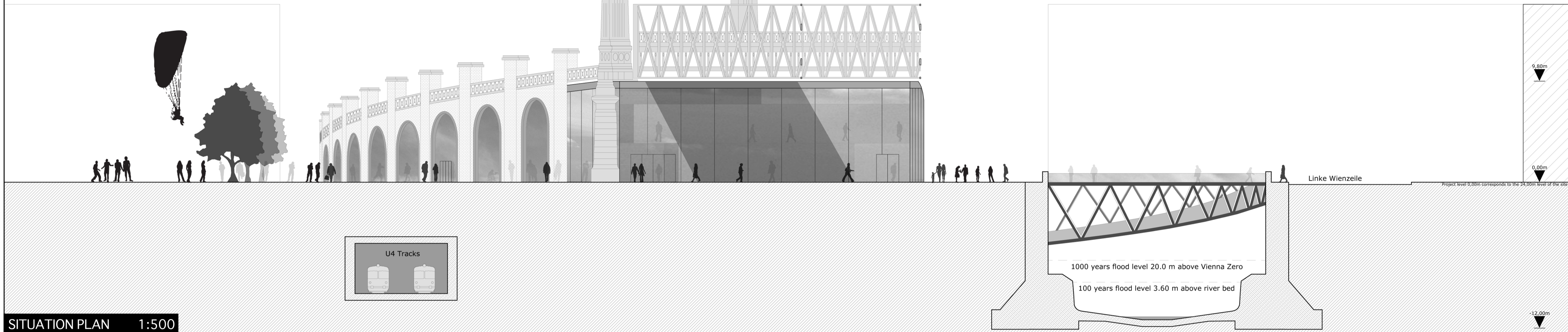
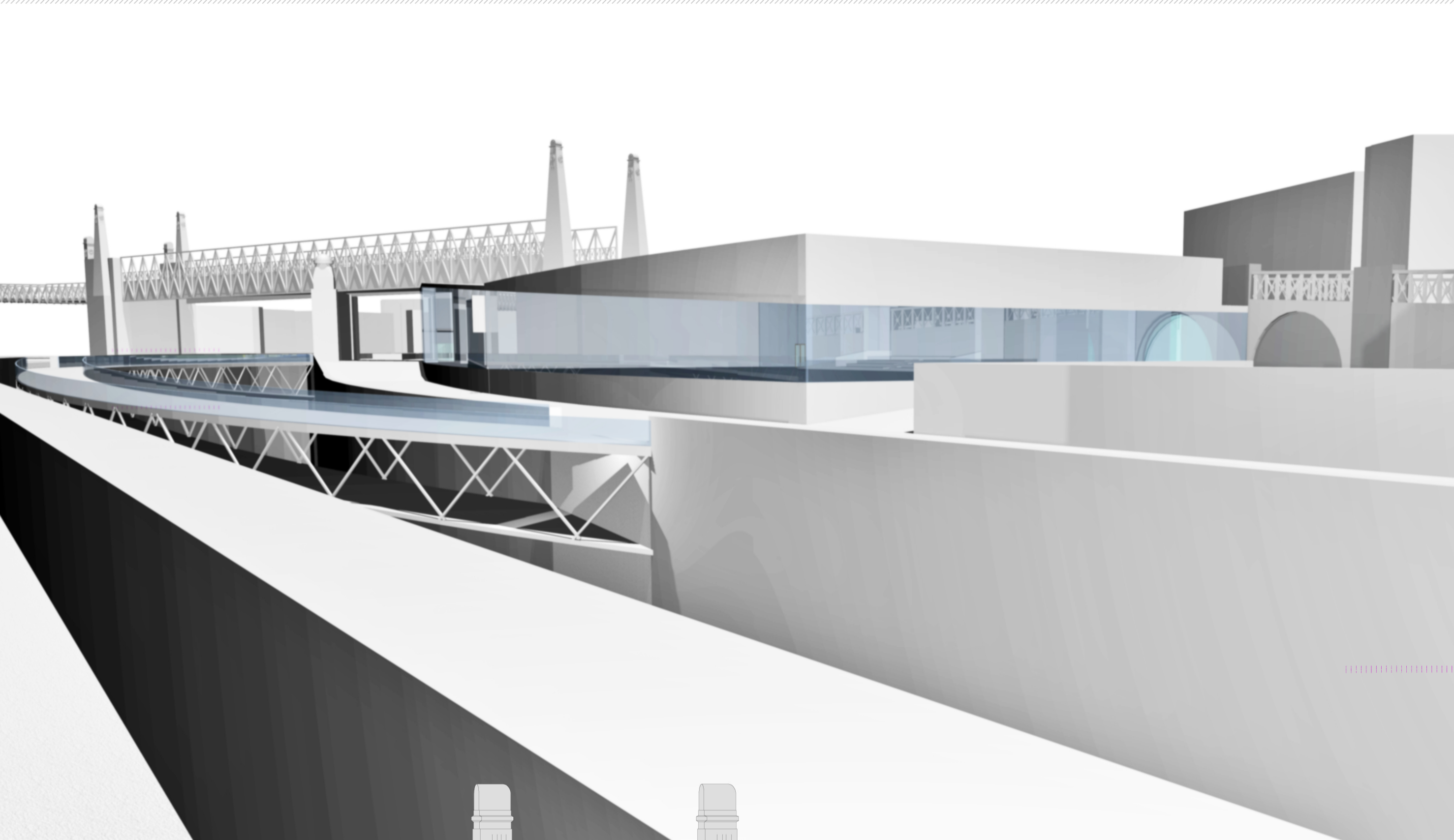
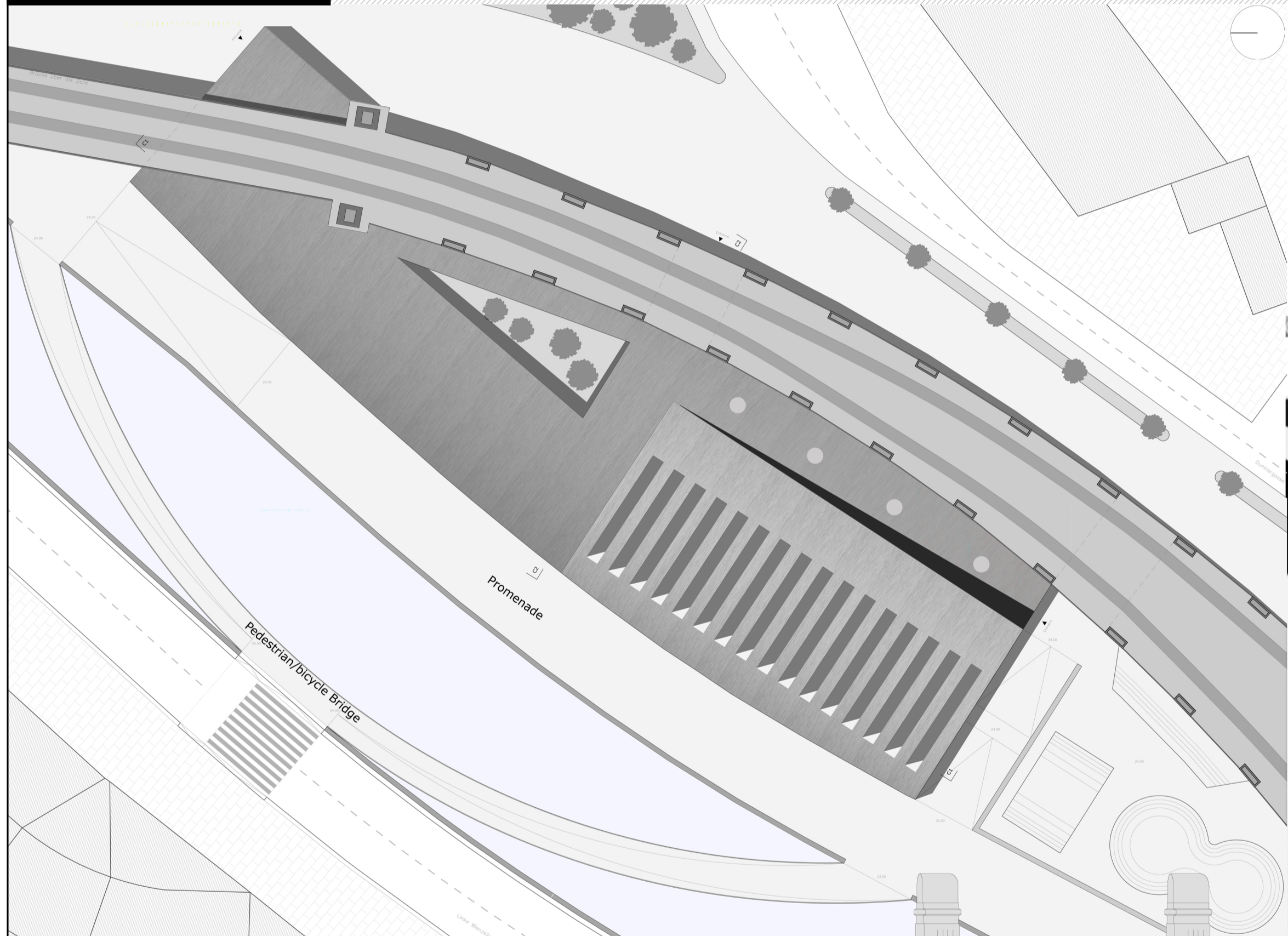


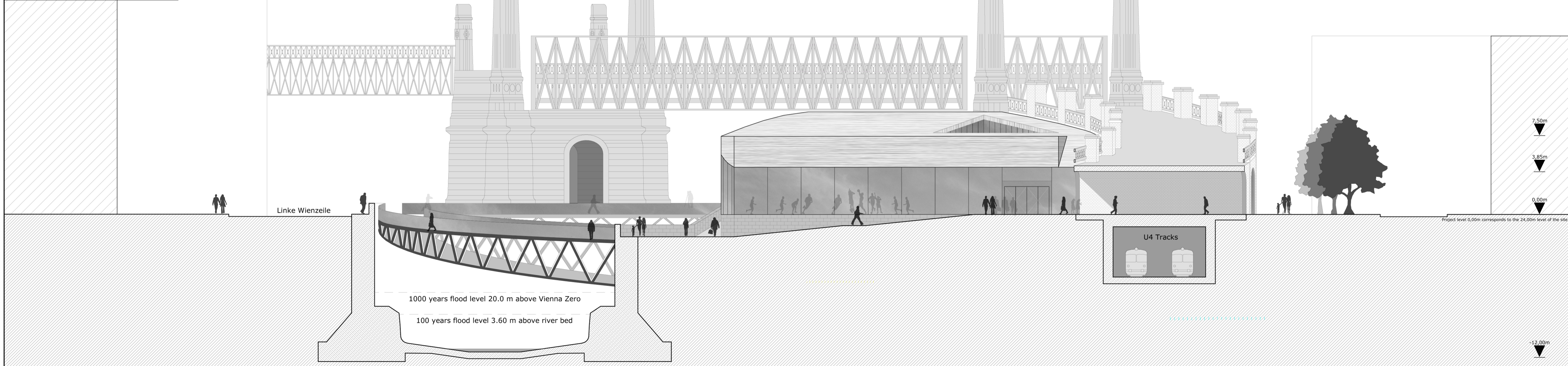
NORTH FACADE 1:200



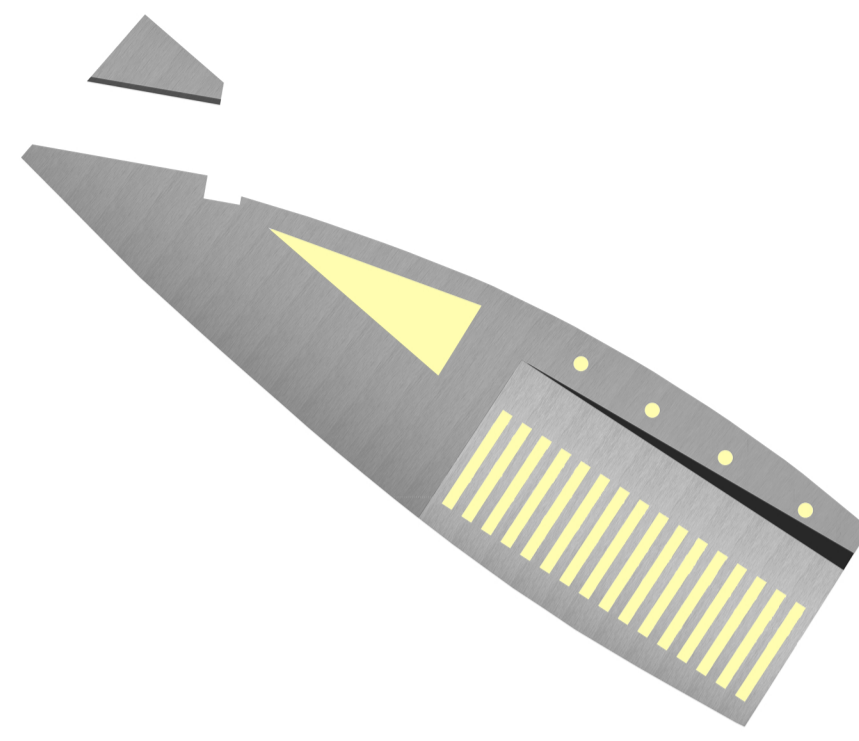
SITUATION PLAN 1:500



SOUTH FACADE 1:200



ZENITH ILLUMINATION



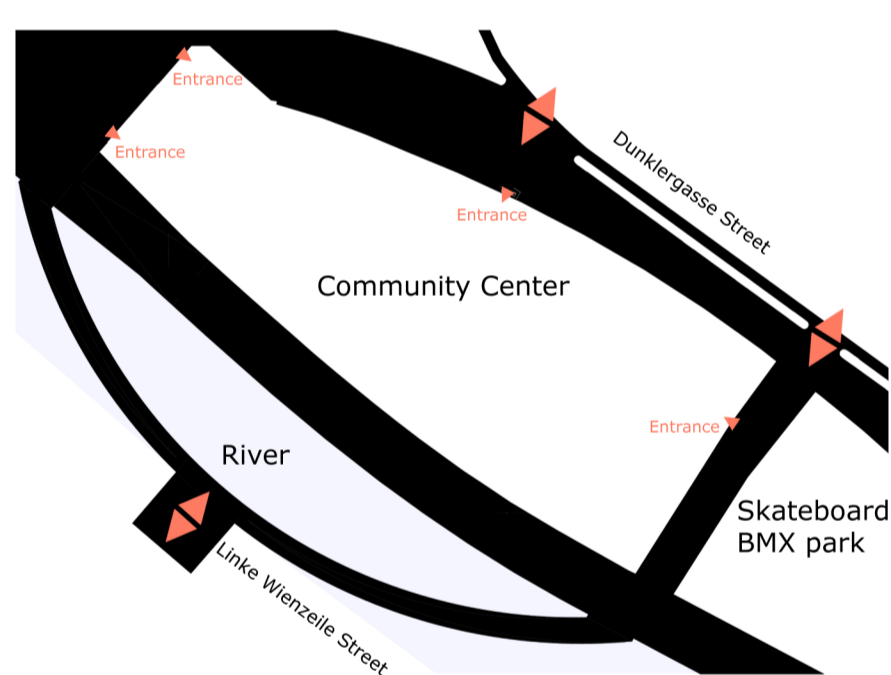
Illumination as a guide orientation
The position of the interior garden, allows natural illumination to the corridor of the workshops, corridor of the reading zone, and to the first floor access ramp.

The glass that involves the garden, also allows visual communication between different functional spaces.

The corridor between the sports area also as zenith illumination, announcing each entrance under the arcs.

Because of the wide measure of the multi-purpose hall, a system of indirect zenith illumination was conceived.




ACCESSIBILITY



Access it from everywhere
Access the center from north/south/east/west, directly from metro/tram stations, with pedestrian paths, that avoid any traffic contact.

Strategical bridges permits inputs and outputs into the site, crossing the river with softness and elegance.

The multiplicity of entrances to the center, permits direct correspondence to each path that leads to it.

-  Fluent access to the building is possible, directly from everywhere in the site. Crossing the pedestrian bridges, that have 2% maximum inclination, make circulating in the site easy as can be.
-  The circulating system is a most-value of this proposal, the guide lines and orientation marks let you easy walk trough the site and going inside the center, directly from any metro station or street.
-  Tired of leaving and picking your children before and after work? Your pedestrian path to the metro/tram stations, for going and returning from work, will lead you to the center for leaving/picking your children, or even to take a nice coffee.