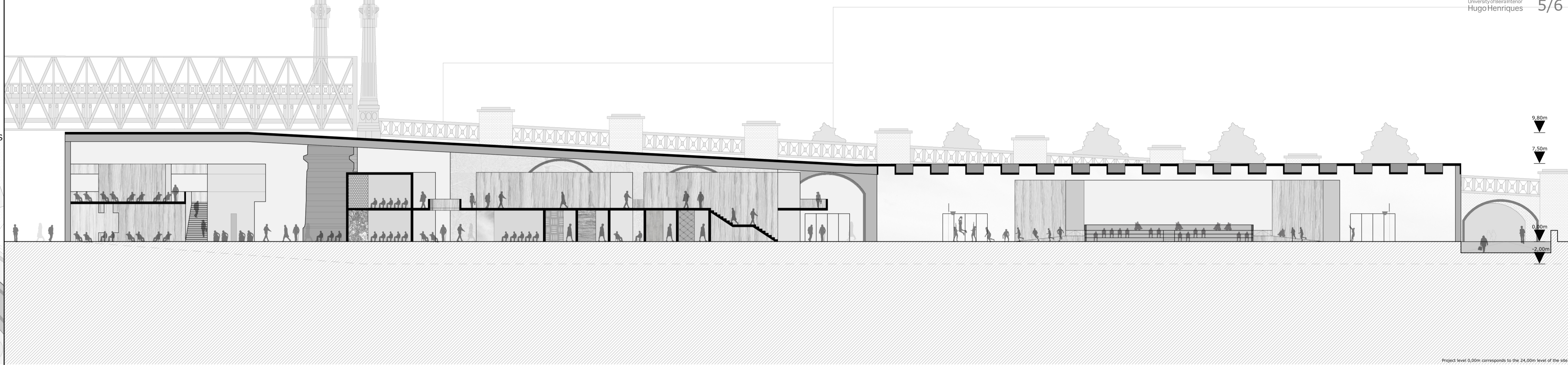
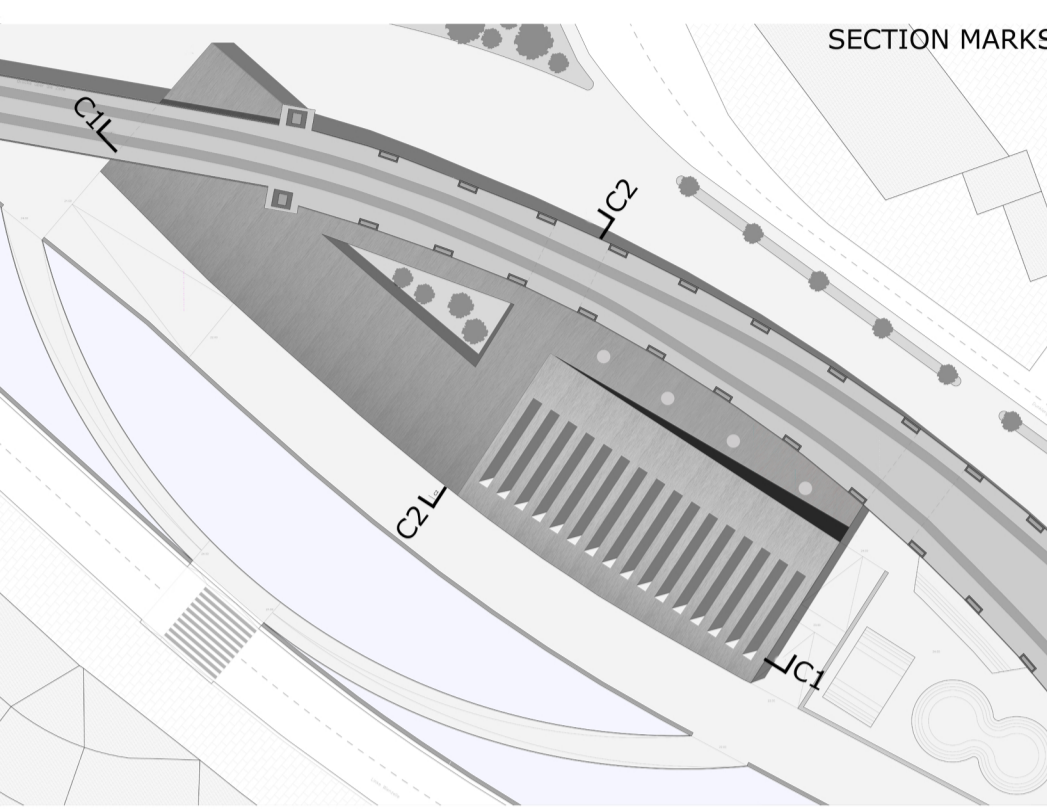
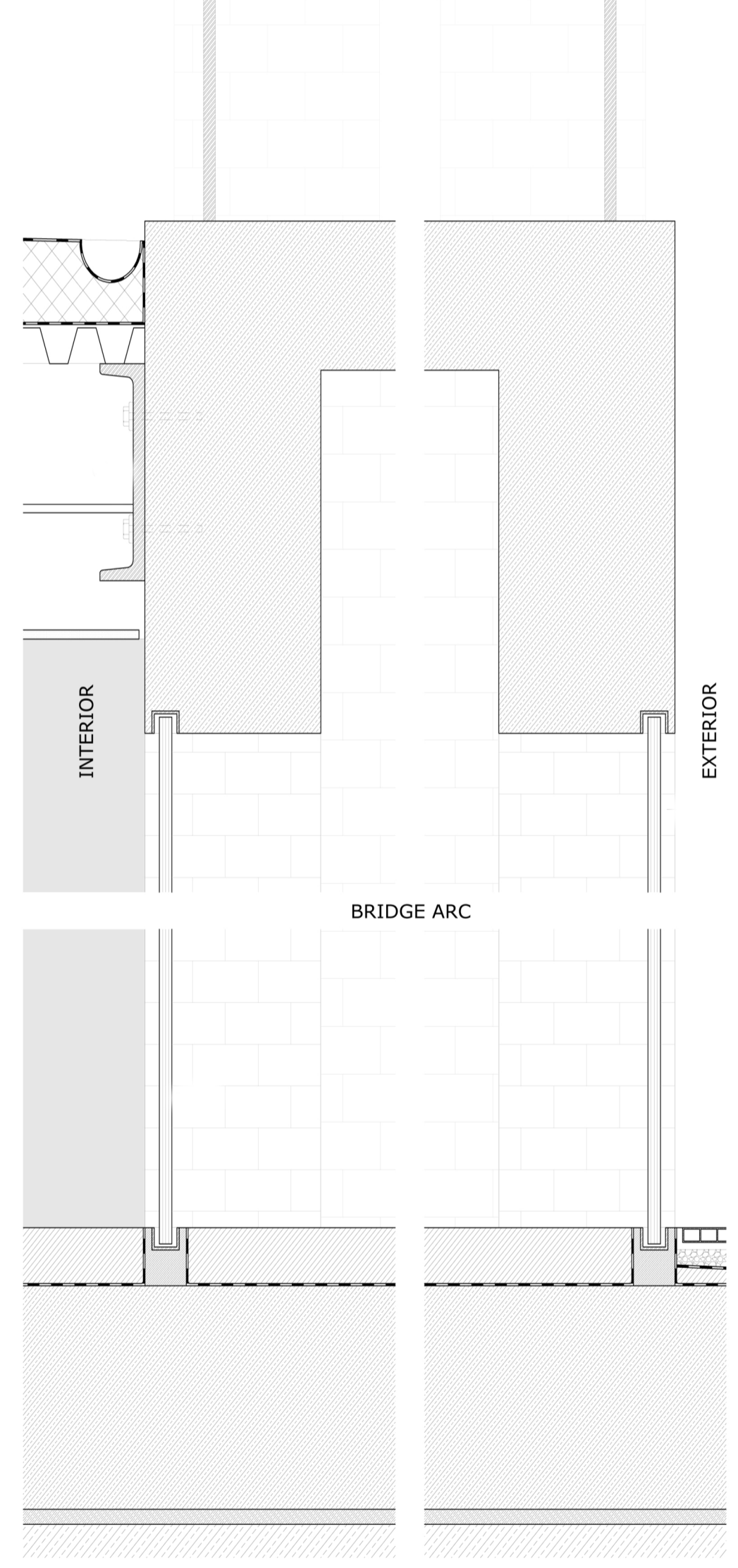


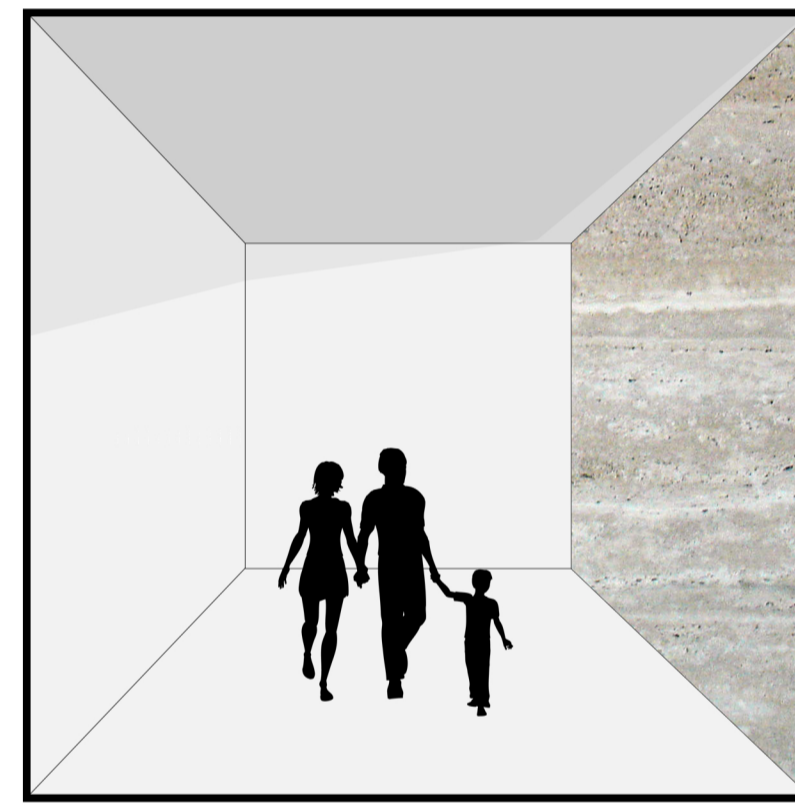
SECTION C1 1:200



CENTER/BRIDGE INTERSECTION D1 1/10

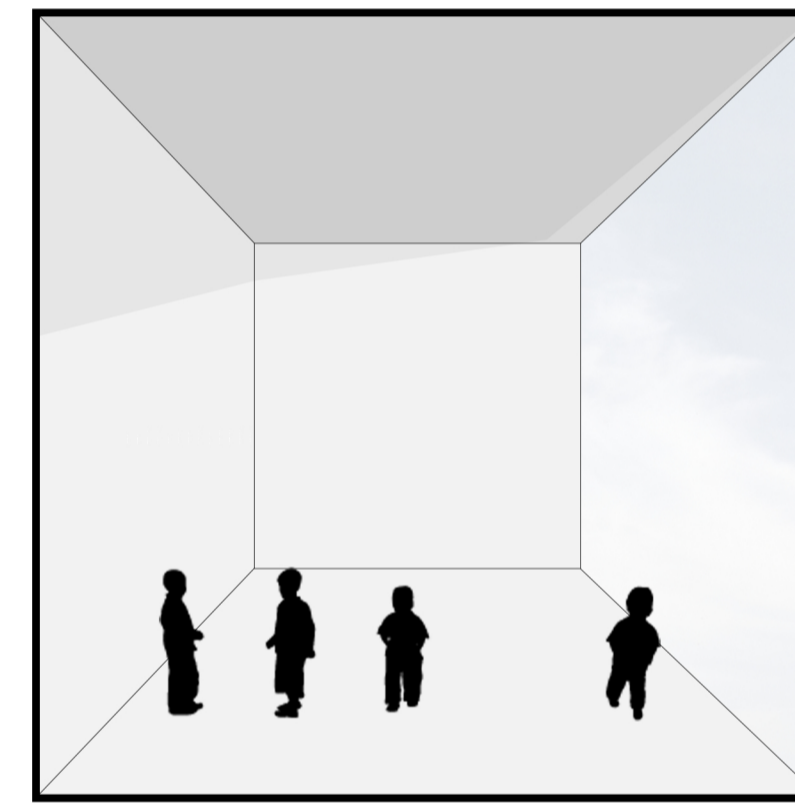


E3 Reading Room



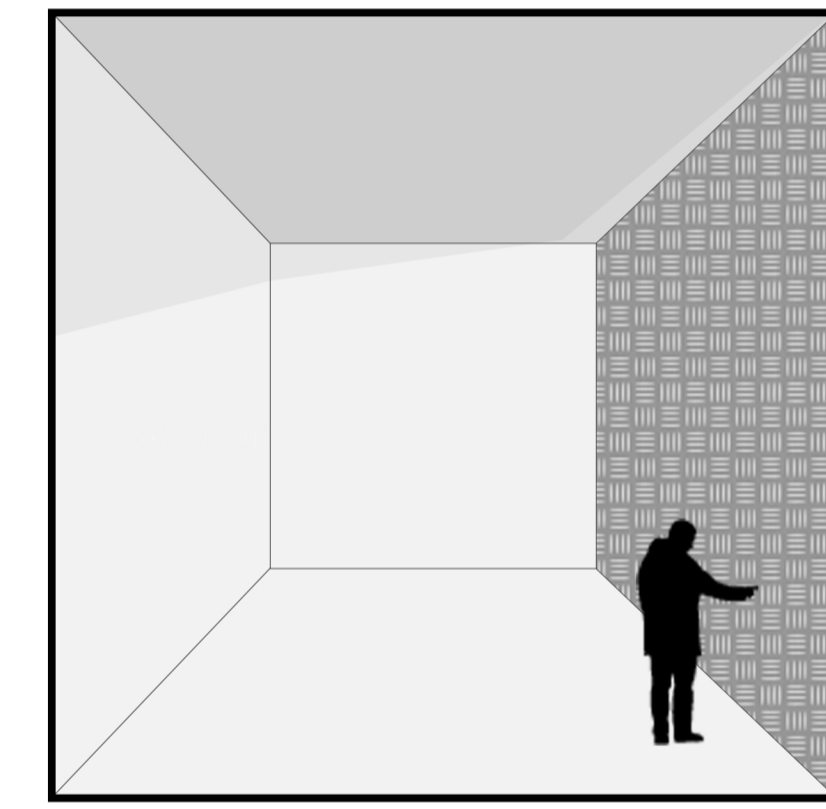
Stone

E4 Kids Room



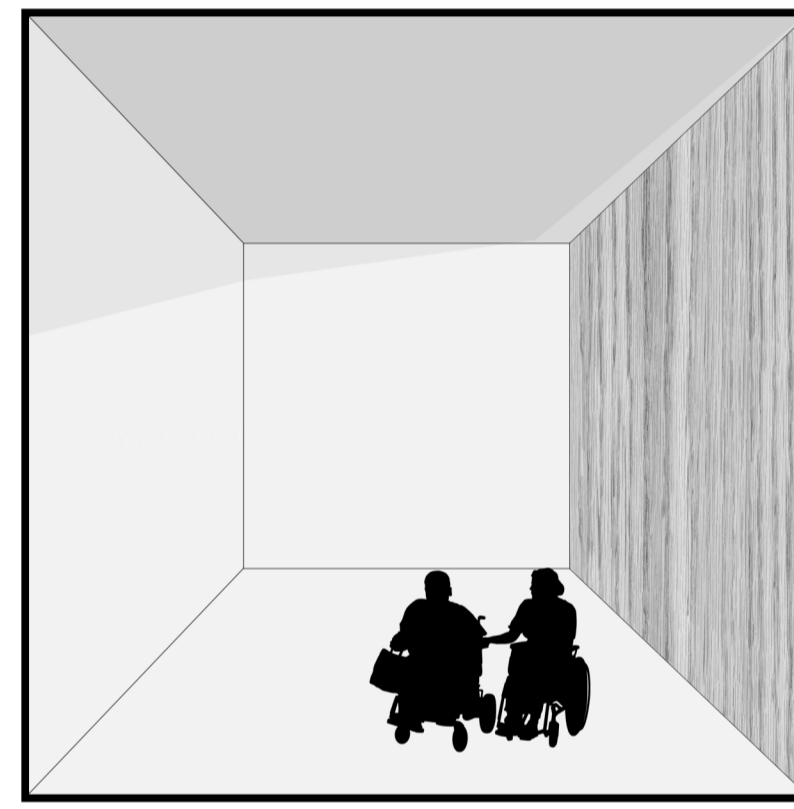
Glass

E5 Toy Paradise



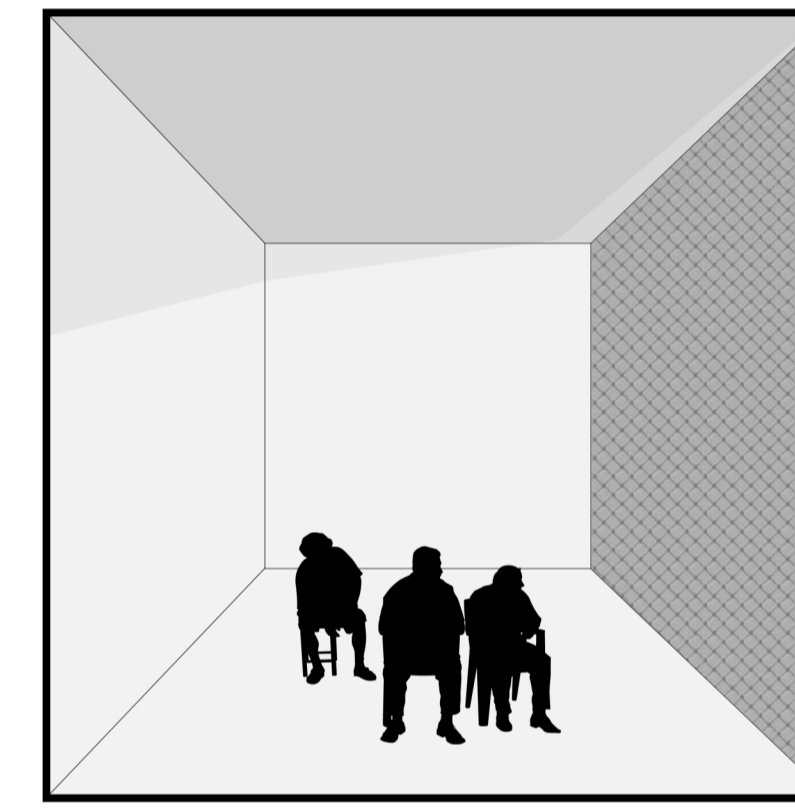
Metal

E6 Game Area



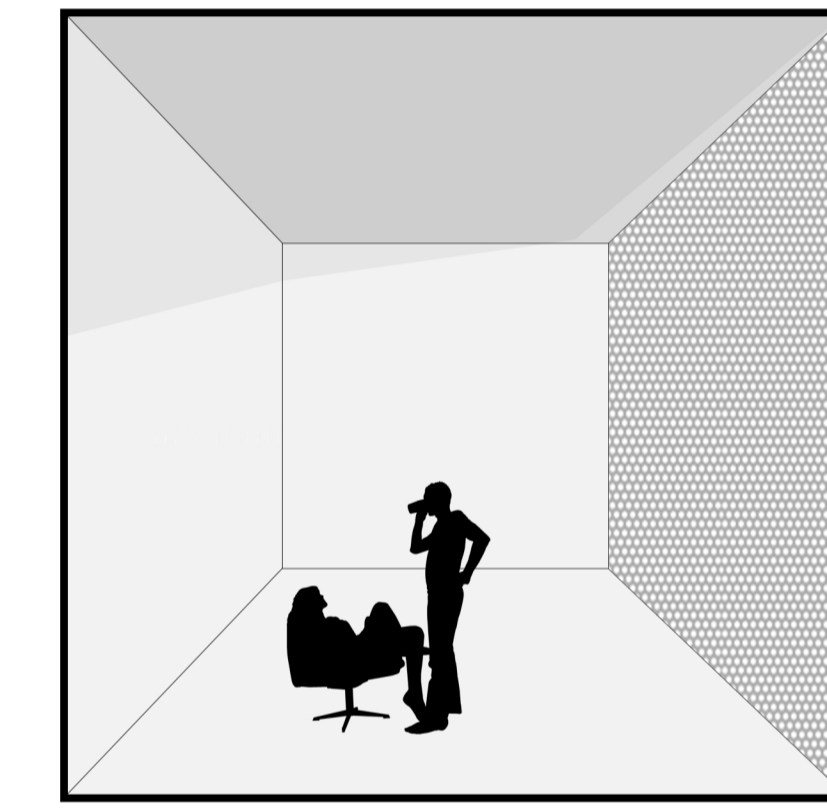
Wood

E7 Group Room



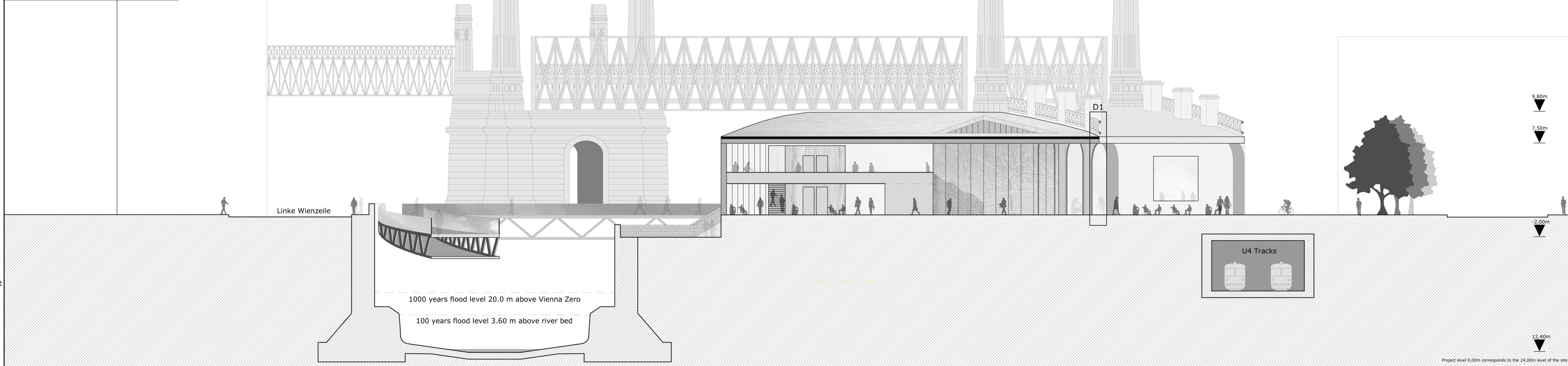
Carpet

E8 Class Room



Perforated Metal

SECTION C2 1:200



Low elevation of the blocks, and the displacement of them between spaces, permits big visual perspectives of the center, providing better orientation.

With the different variations of wall covers for the blocks, each one of them will have a distinctive texture, smell, color, temperature. This will allow the visitor identify each area with its correspondent material.

Children can benefit with the fact of the center looks like a park, they will be fascinated with the variety of activities at their disposal, and the outside green park so close.. won't be an excuse to be far from home.