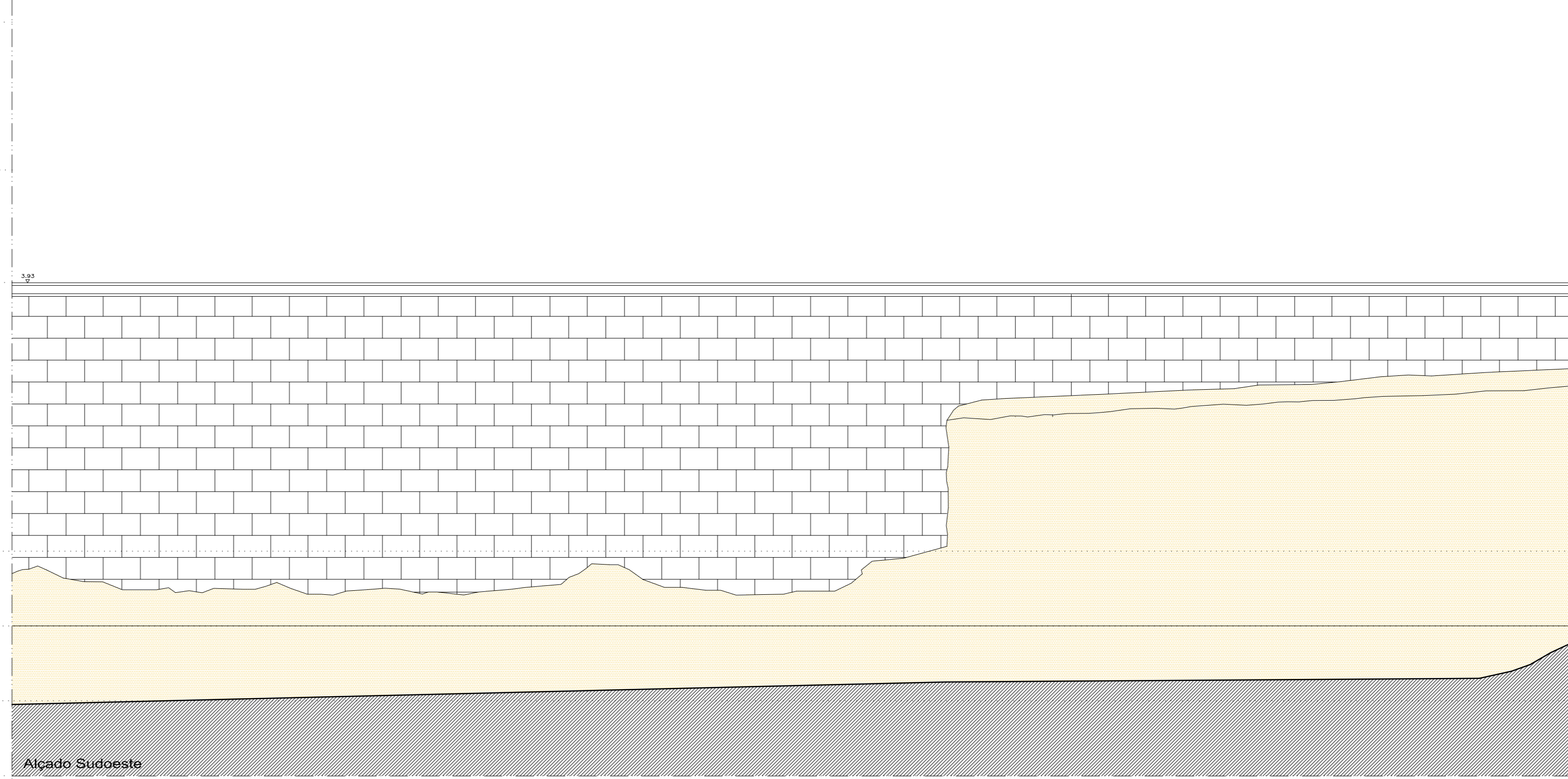
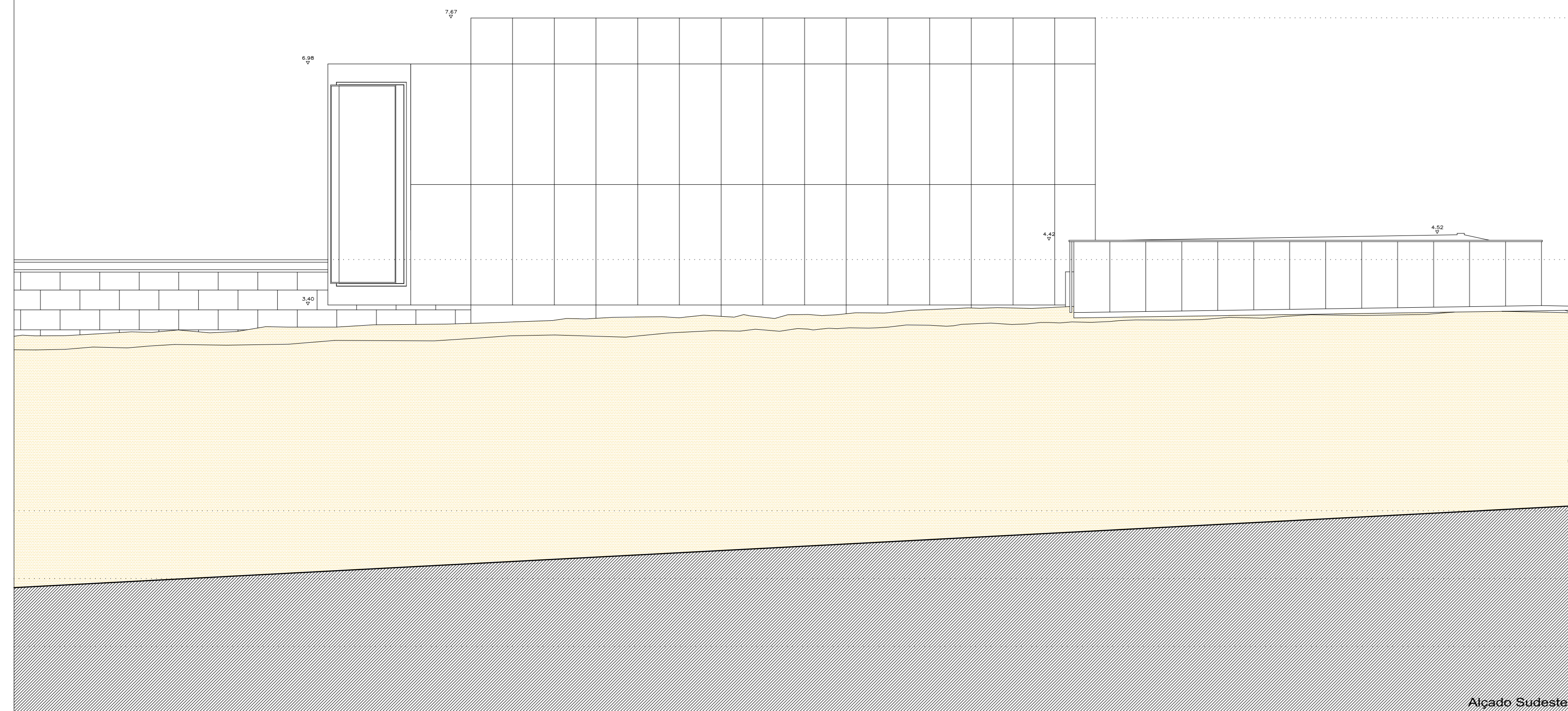


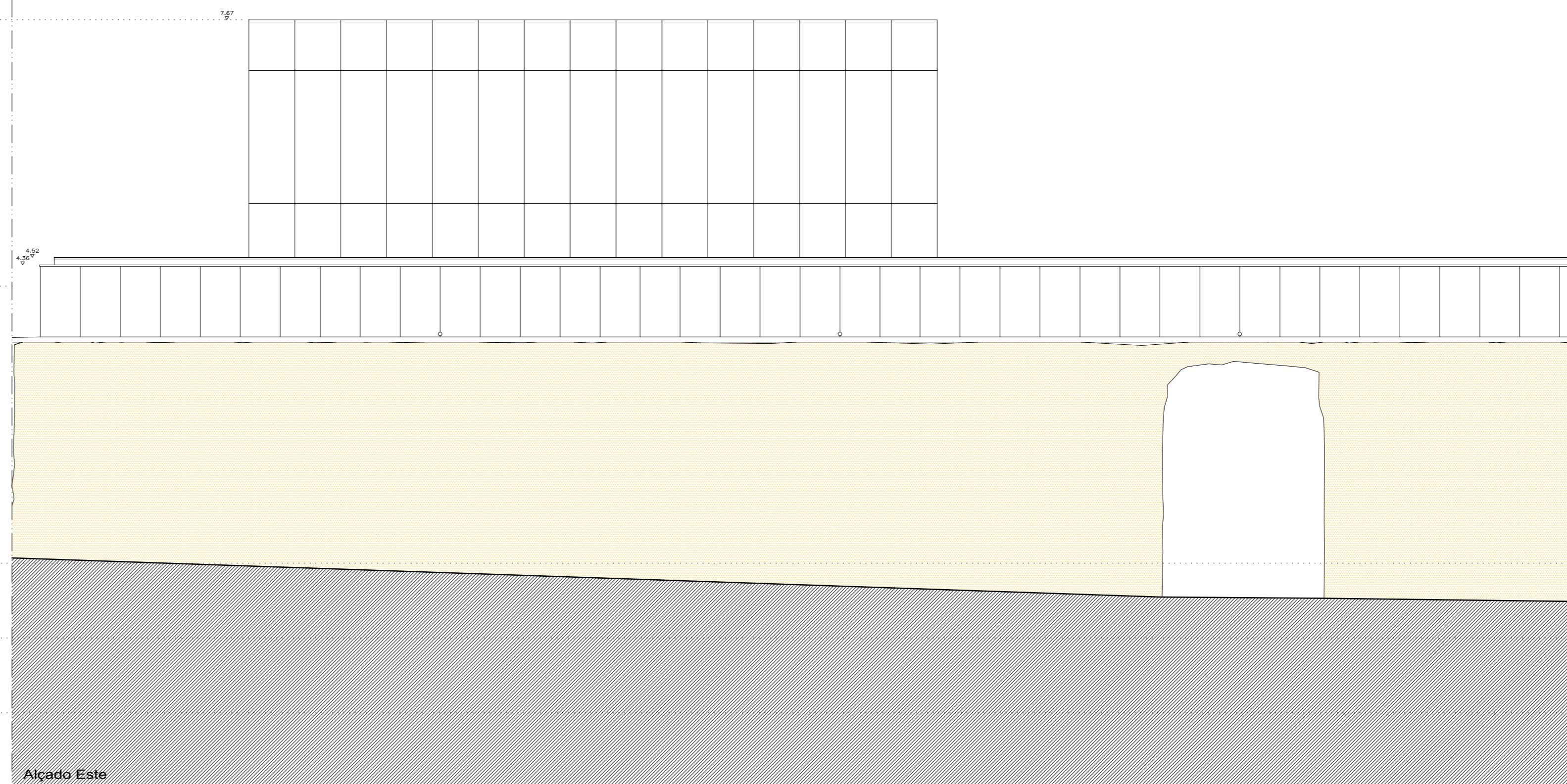
Alçado Oeste



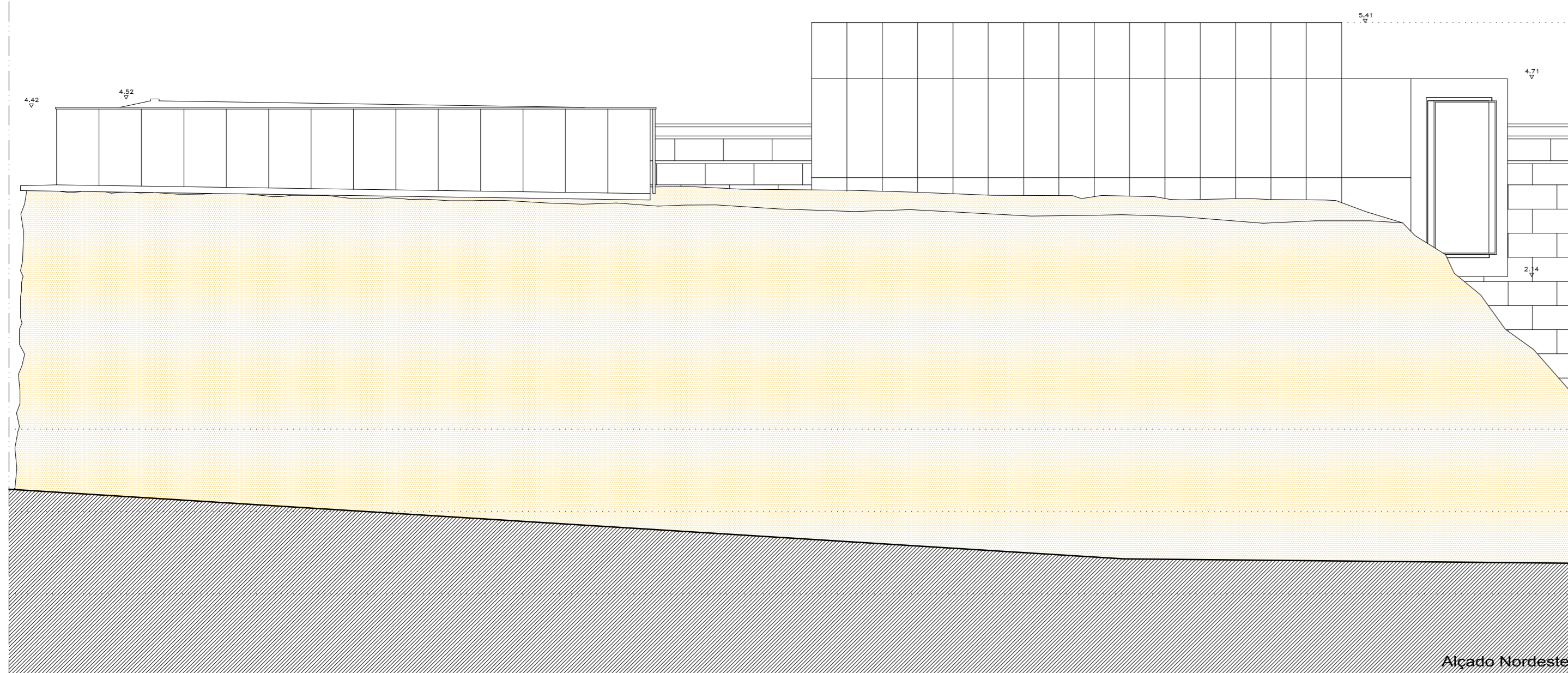
Alçado Sudoeste



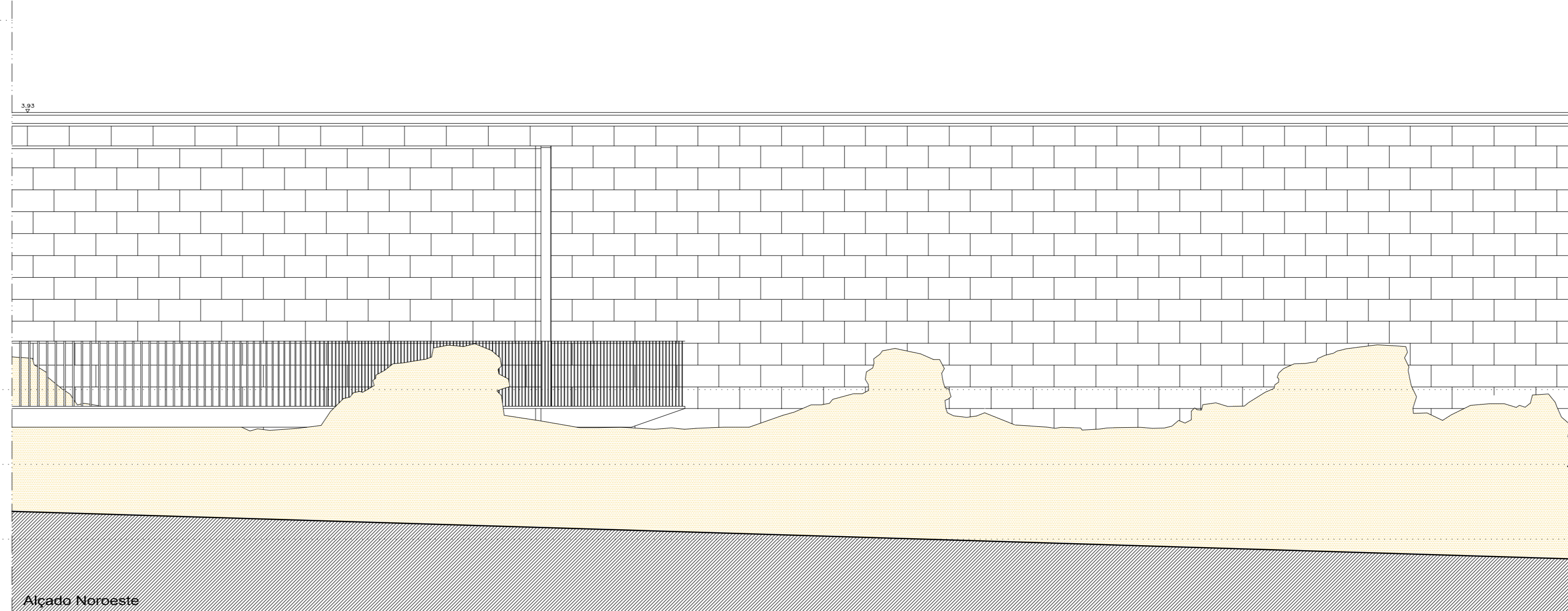
Alçado Sudeste



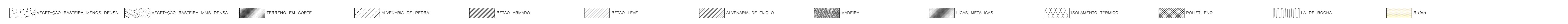
Alçado Este



Alçado Nordeste



Alçado Noroeste



000 COTA DE PAVIMENTO (EM METROS)
000+ ALTURA DO TETO (EM METROS)

A questão de infra na obra arquitetônica. Reconstrução da bateria de Orla em Centro de Arte

Martin da Costa (2002) ESCALA 1/50 11/10/2007