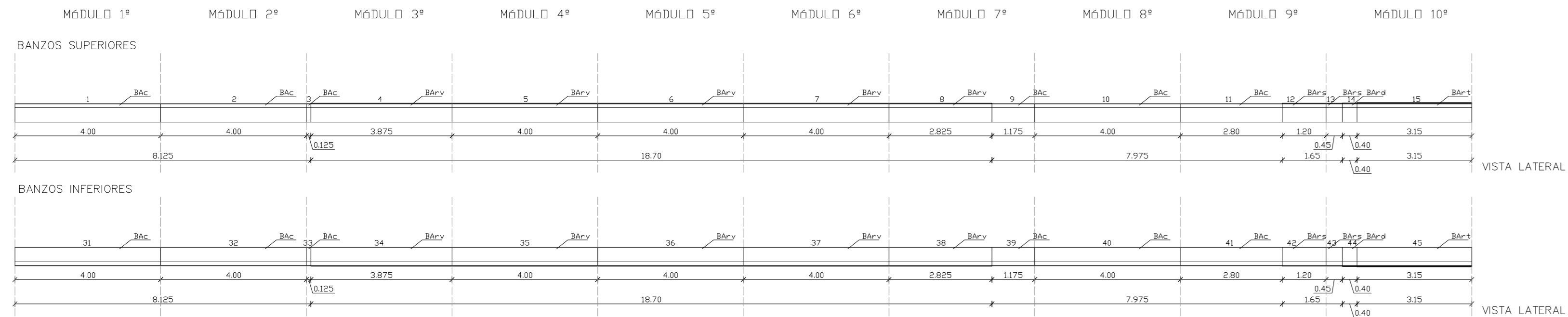
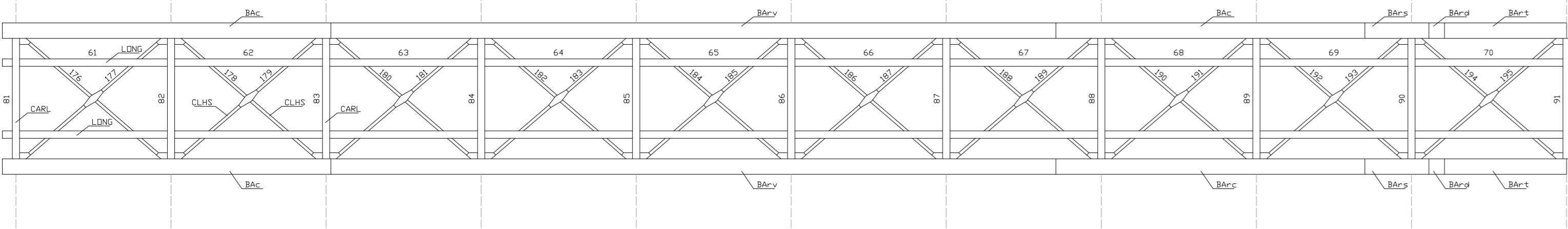


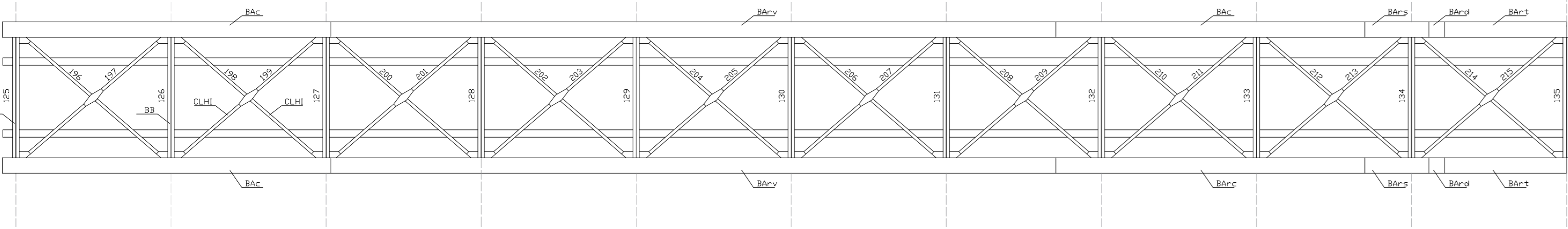
TRAMO A



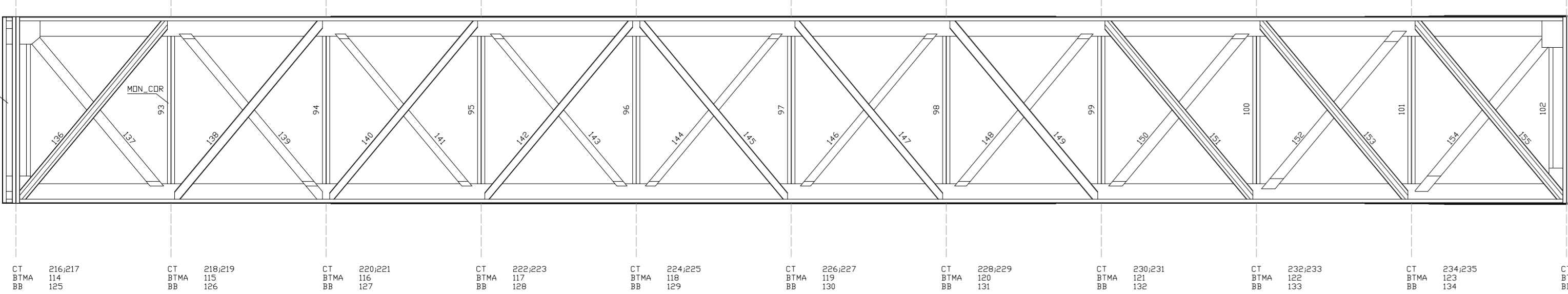
CARLINGAS (CARL)  
LONGARINAS (LONG)  
CONTRAVENTAMENTO LONGITUDINAL HORIZONTAL SUPERIOR (CLHS)



BIELAS NA BASE (BB)  
CONTRAVENTAMENTO LONGITUDINAL HORIZONTAL INFERIOR (CLHI)

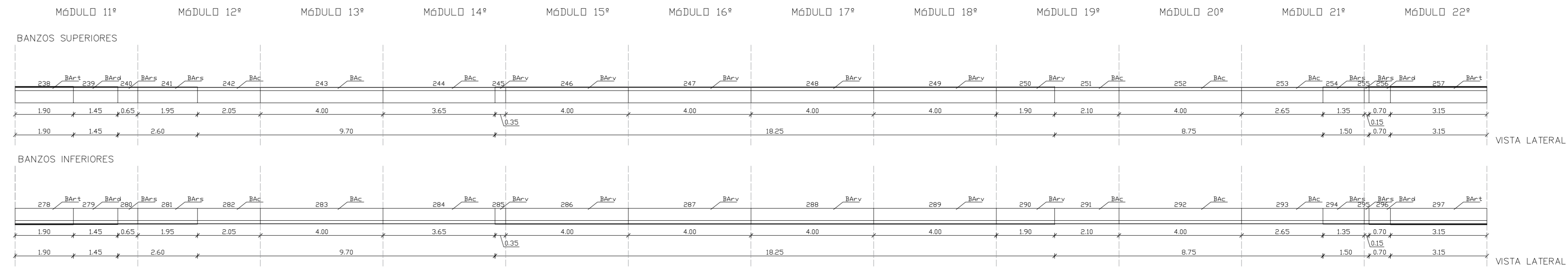


DIAGONAIS (U270x70; U235x80; U200x80)  
MONTANTES (MON\_PE; MON\_PC; MON\_COR)  
CONTRAVENTAMENTO TRANSVERSAL (CT)  
BIELAS TRANSVERSAIS A MEIA ALTURA (BTMA)  
BIELAS NA BASE (BB)

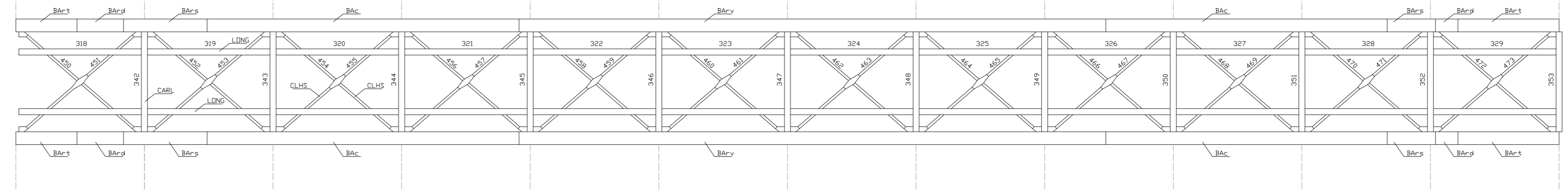


CT 216,217	CT 218,219	CT 220,221	CT 222,223	CT 224,225	CT 226,227	CT 228,229	CT 230,231	CT 232,233	CT 234,235	CT 236,237
BTMA 114	BTMA 115	BTMA 116	BTMA 117	BTMA 118	BTMA 119	BTMA 120	BTMA 121	BTMA 122	BTMA 123	BTMA 124
BB 125	BB 126	BB 127	BB 128	BB 129	BB 130	BB 131	BB 132	BB 133	BB 134	BB 135

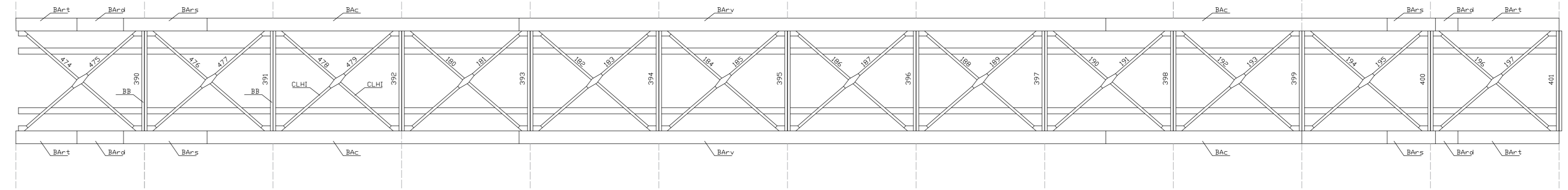
TRAMO B



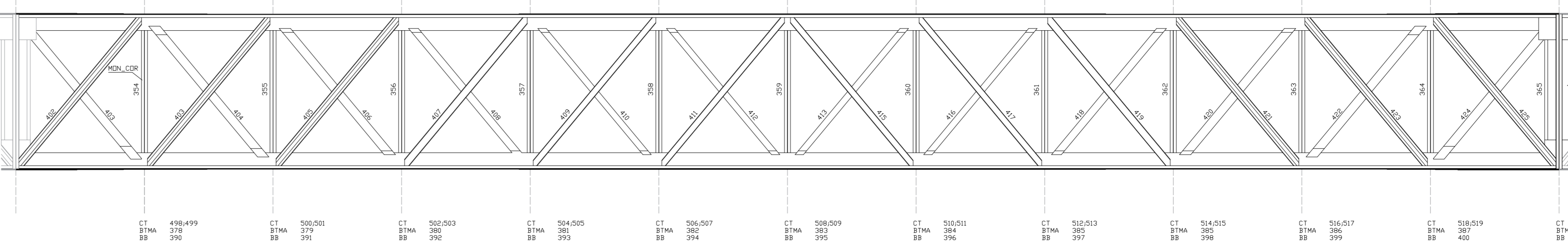
CARLINGAS (CARL)  
LONGARINAS (LONG)  
CONTRAVENTAMENTO LONGITUDINAL HORIZONTAL SUPERIOR (CLHS)



BIELAS NA BASE (BB)  
CONTRAVENTAMENTO LONGITUDINAL HORIZONTAL INFERIOR (CLHI)



DIAGONAIS (U270x70; U235x80; U200x80)  
MONTANTES (MON\_PE; MON\_PC; MON\_COR)  
CONTRAVENTAMENTO TRANSVERSAL (CT)  
BIELAS TRANSVERSAIS A MEIA ALTURA (BTMA)  
BIELAS NA BASE (BB)



CT 498,499	CT 500,501	CT 502,503	CT 504,505	CT 506,507	CT 508,509	CT 510,511	CT 512,513	CT 514,515	CT 516,517	CT 518,519	CT 520,521
BTMA 398	BTMA 399	BTMA 392	BTMA 393	BTMA 394	BTMA 395	BTMA 396	BTMA 397	BTMA 398	BTMA 399	BTMA 400	BTMA 401
BB 390	BB 391	BB 392	BB 393	BB 394	BB 395	BB 396	BB 397	BB 398	BB 399	BB 400	BB 401

Deserção de Mestrado Integrado em Engenharia Civil: Estruturas e Construção

Linha: Linha da Beira Baixa  
Troço: Troço Covilhã-Guarda  
Local: Ponte sobre a Ribeira de Corges

Executado por: Norberto Gomes nº26496  
Data: junho de 2017

Escalas: 1:100  
Desenho: D/03

UNIVERSIDADE DA BEIRA INTERIOR  
Covilhã, Portugal

IDENTIFICAÇÃO DOS ELEMENTOS ESTRUTURAIS