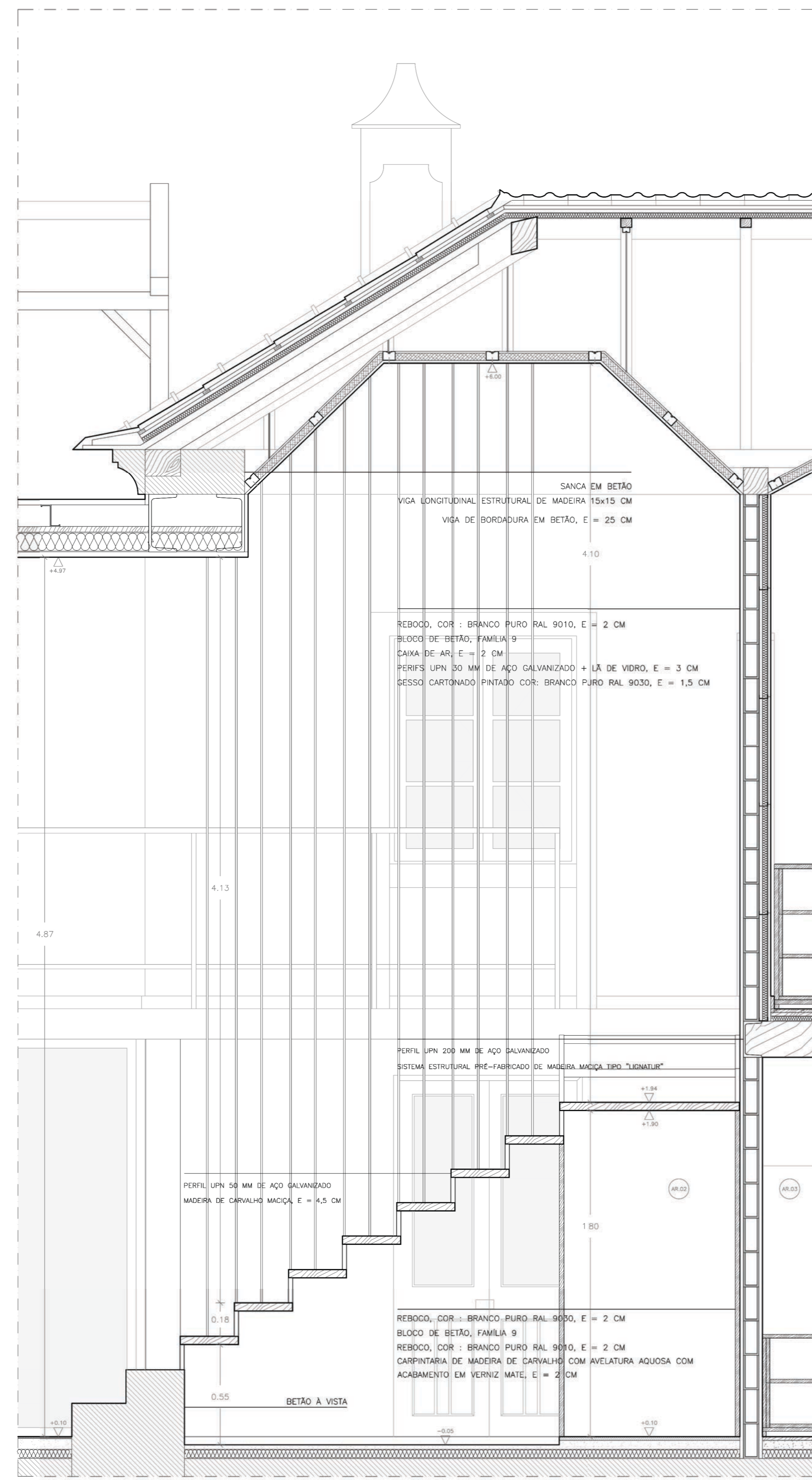
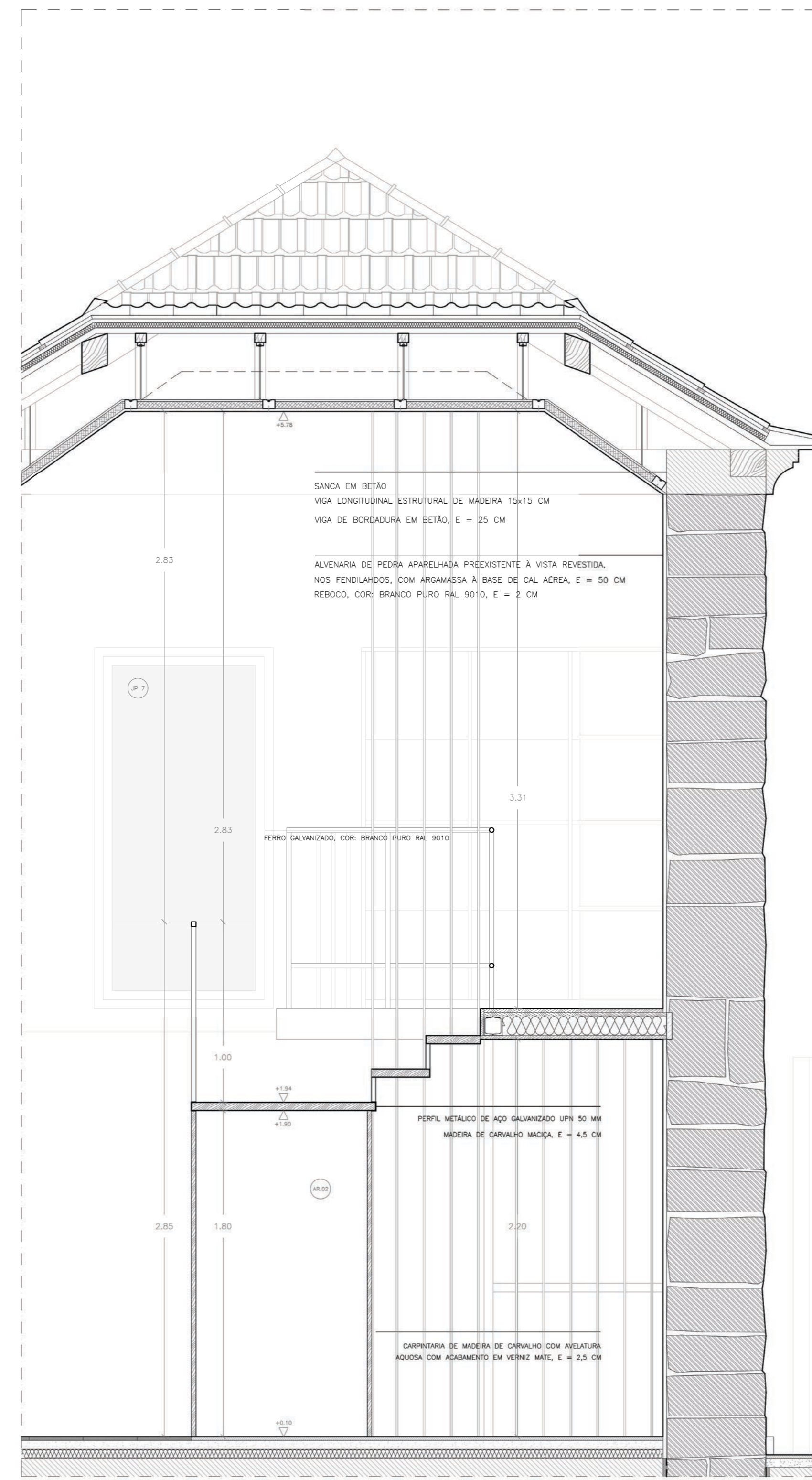


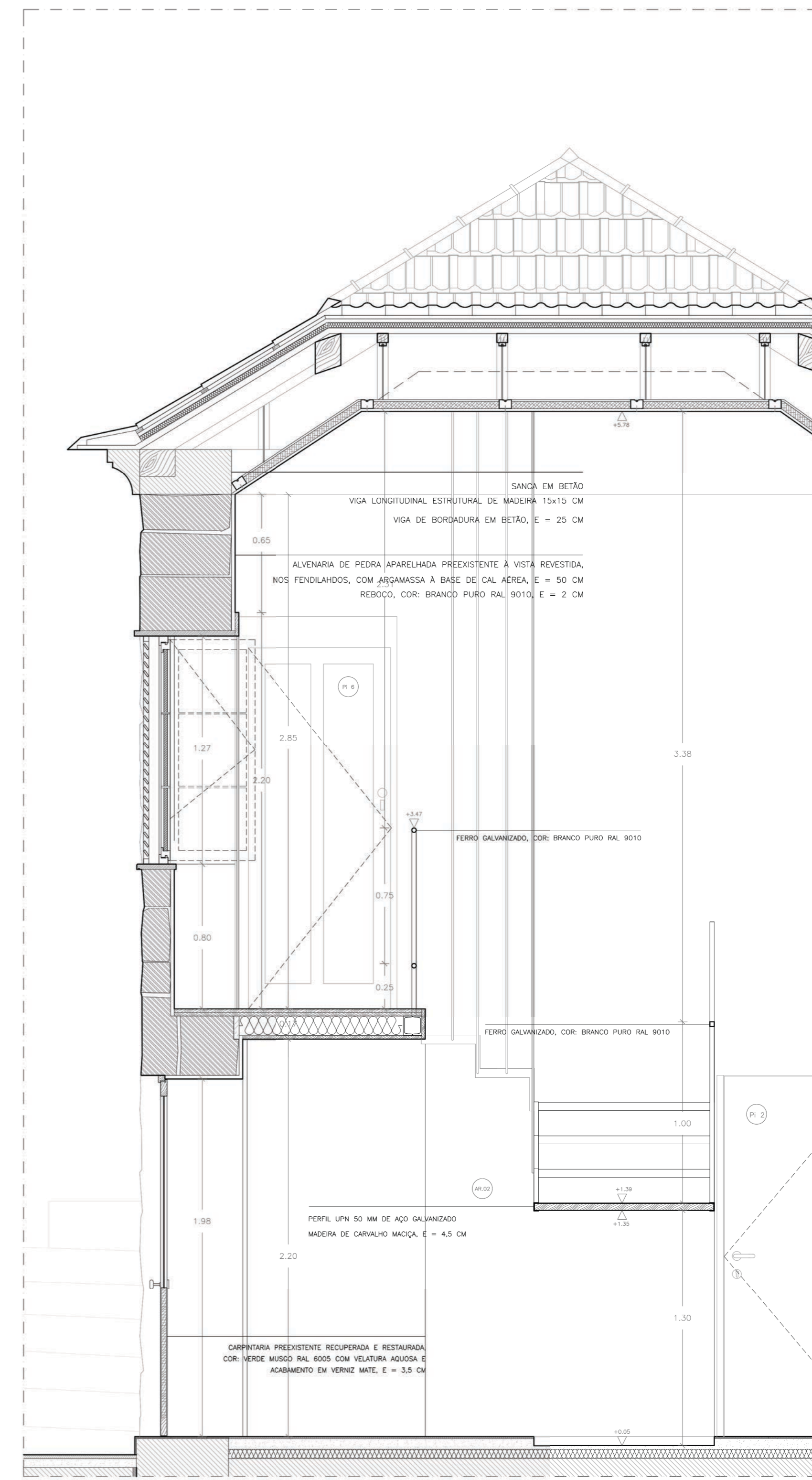
CORTE E1



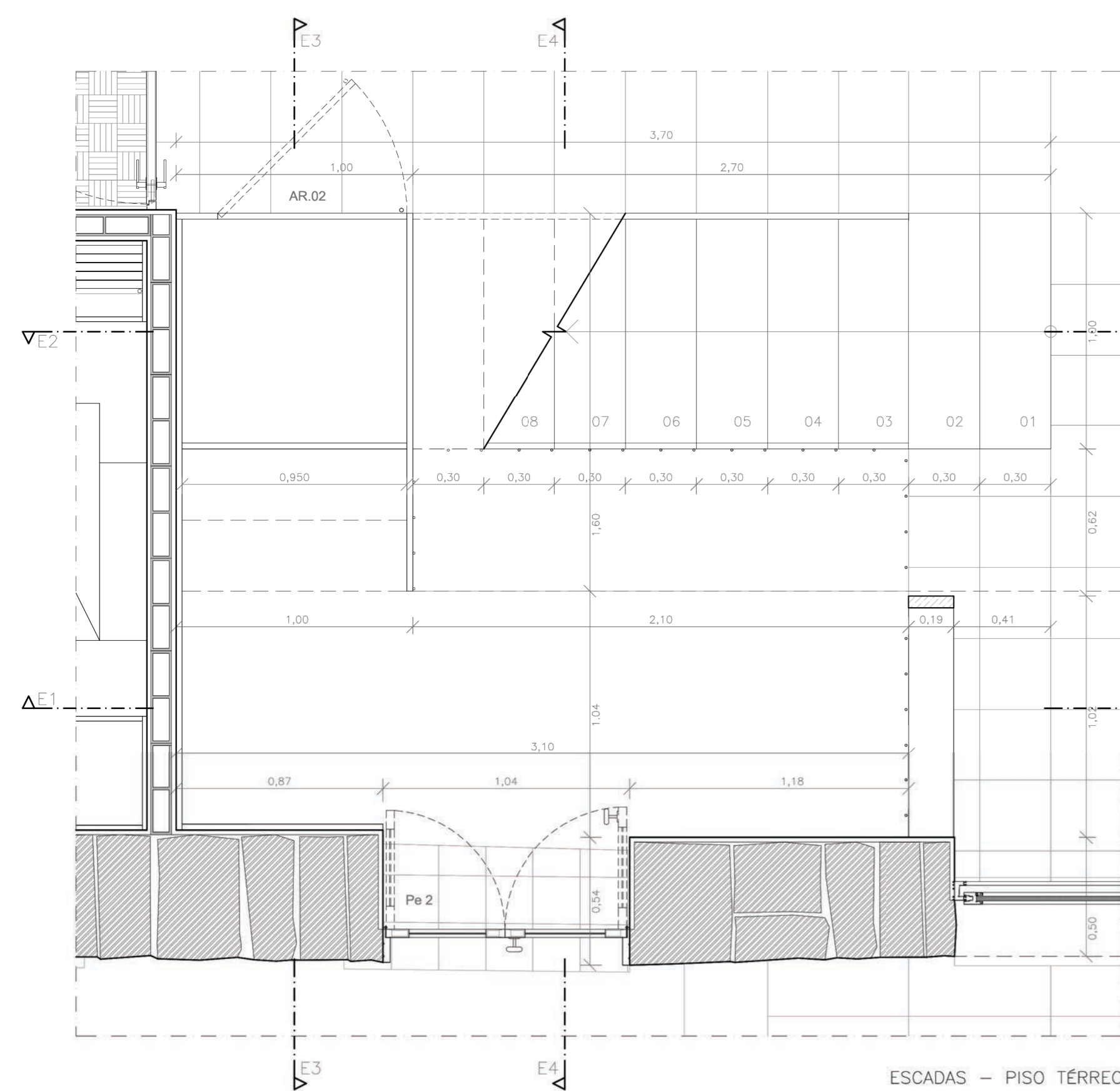
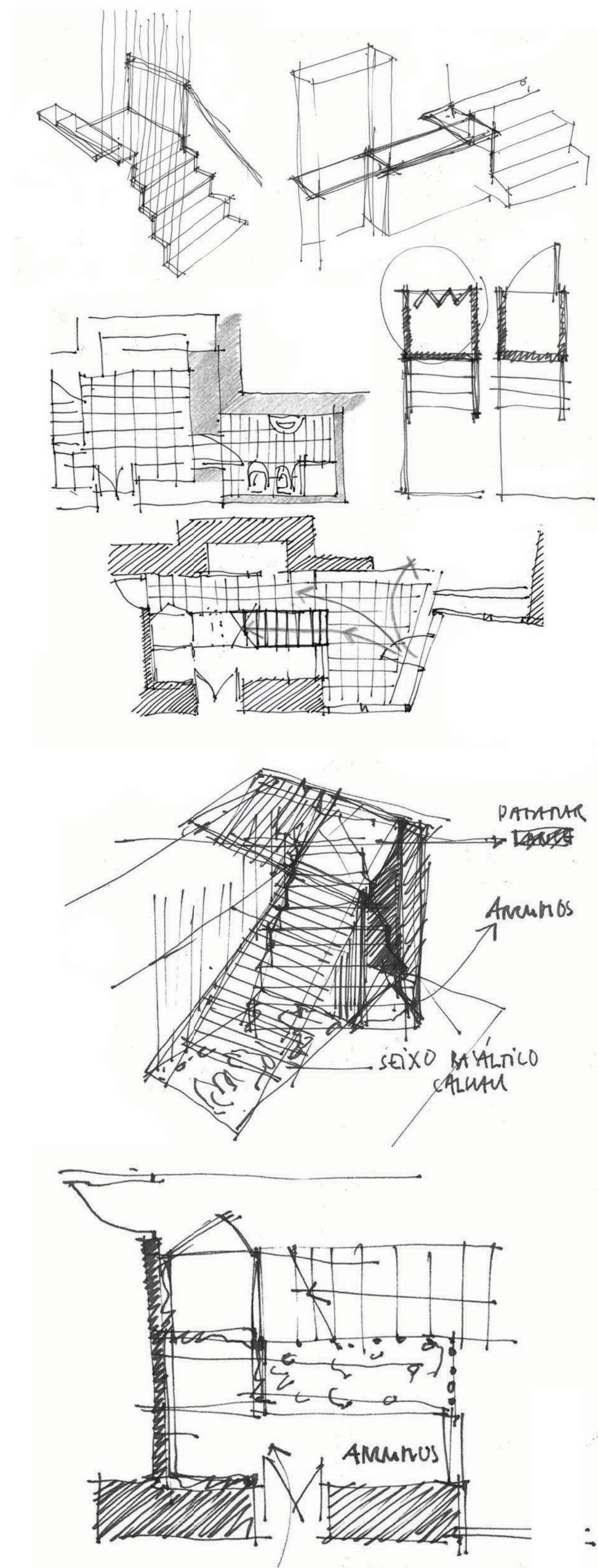
CORTE E2



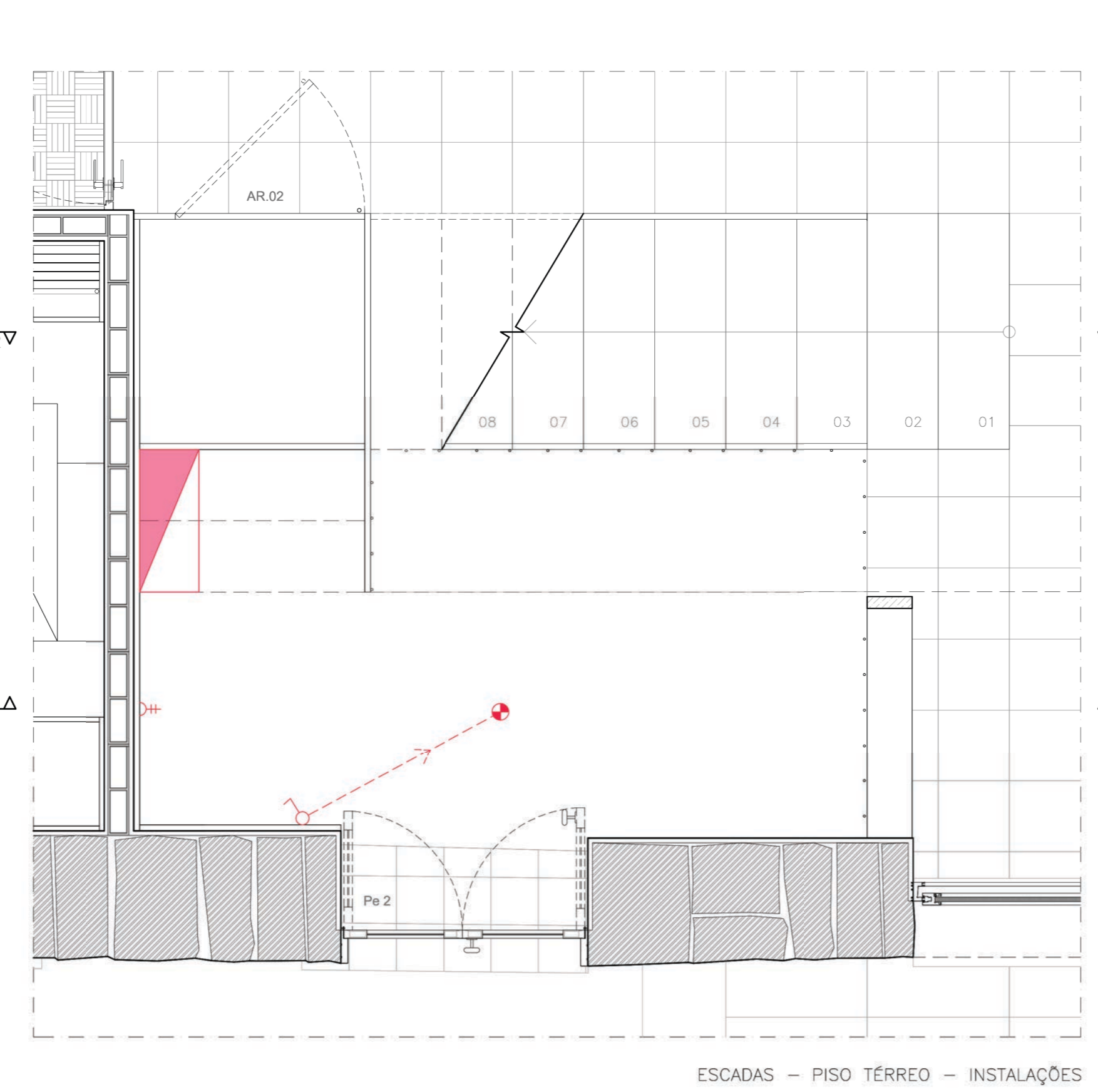
CORTE E3



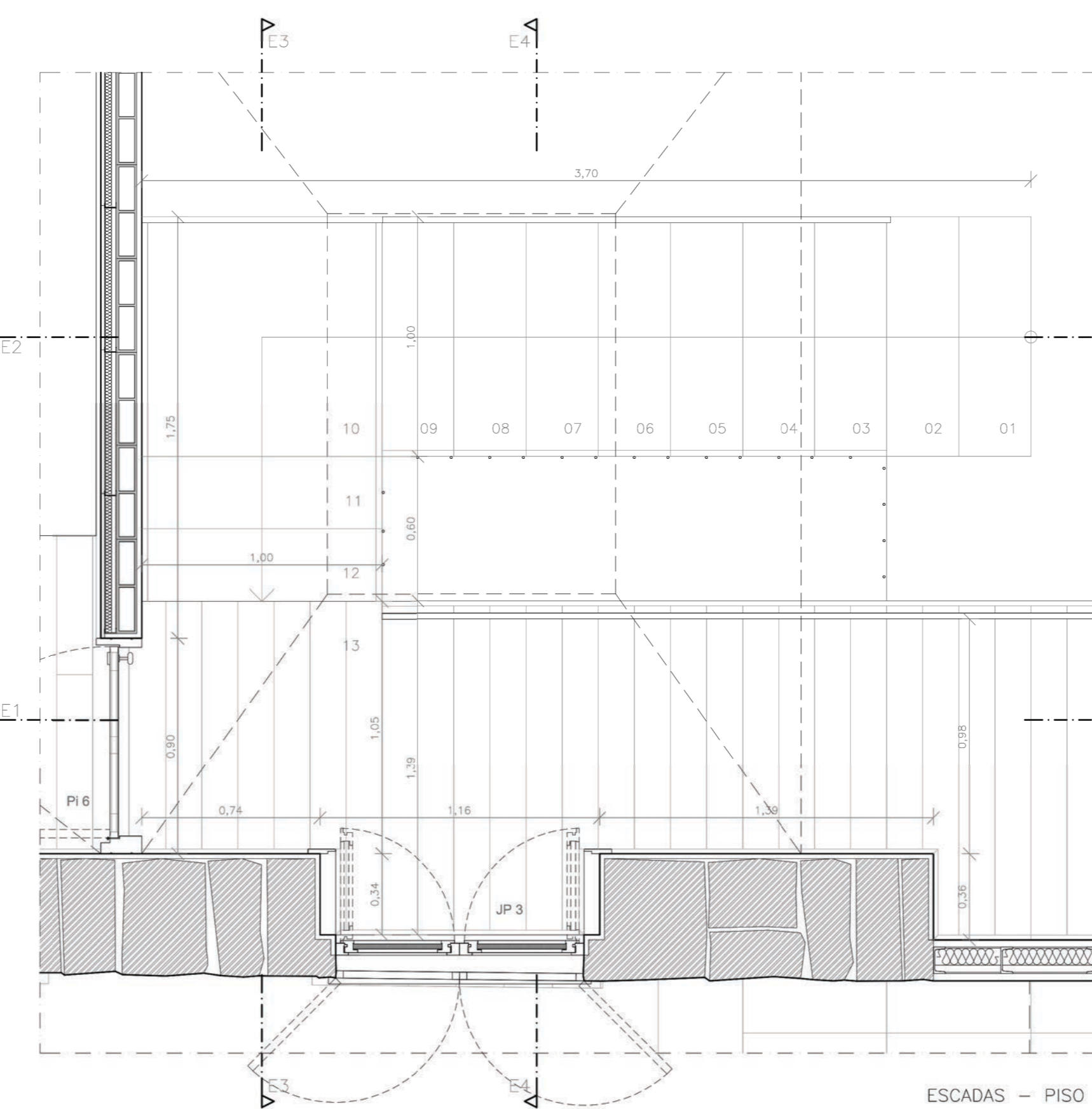
CORTE E4



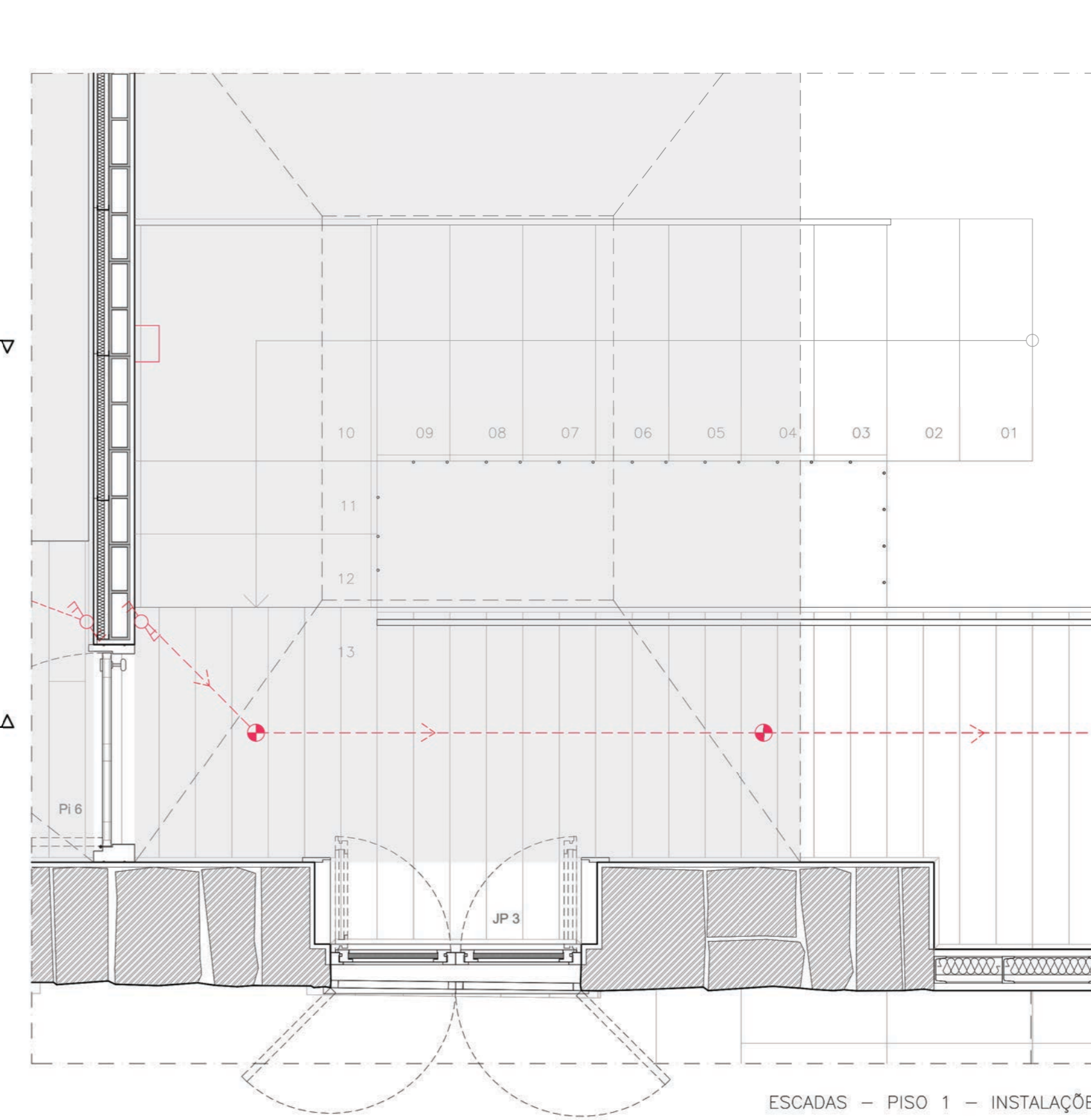
ESCADAS - PISO TERREO



ESCADAS - PISO TERREO - INSTALAÇÕES



ESCADAS - PISO 1



ESCADAS - PISO 1 - INSTALAÇÕES

ESTUDO DA ORGANIZAÇÃO ESPACIAL DO VESTIBULO - ESCADAS.

- LEGENDA DAS INSTALAÇÕES:
- PREPARO PARA PONTO DE ILUMINAÇÃO
 - INTERRUPTOR DUPLO
 - INTERRUPTOR UNIPOLAR
 - TOMADA ELÉTRICA DUPLO
 - PREPARO PARA "TRIÂNGULO" DE ILUMINAÇÃO (ENCASTAR)
 - QUADRO ELÉTRICO
 - CONDUTENTE ELÉTRICA

NOTAS:
 COTA DE SOLERA ALTO = 175,00
 CONSERVAR TODAS AS COTAS EM OBRA.