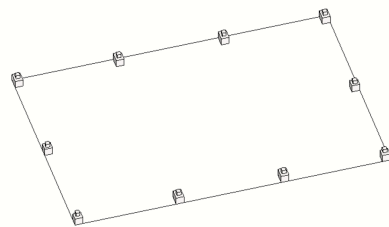
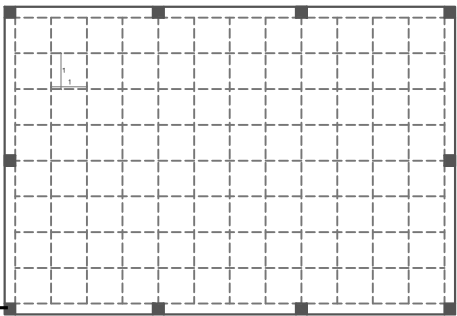
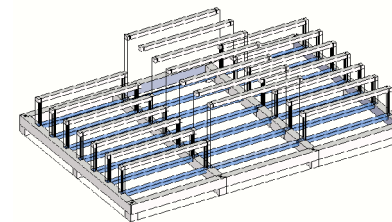
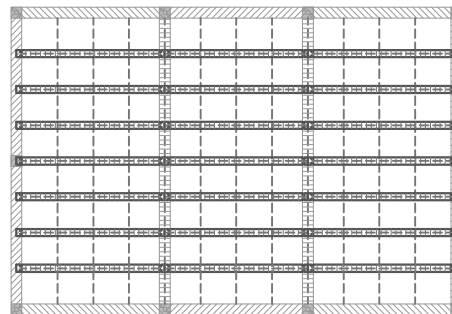


1- 10 Sapatas 0,30 x 0,30 + grelha 1x1

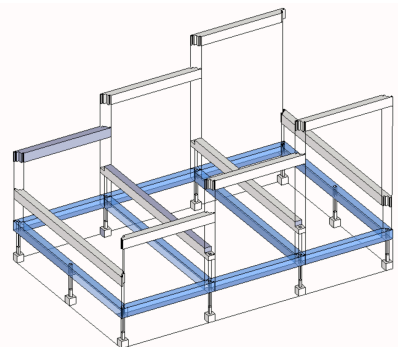
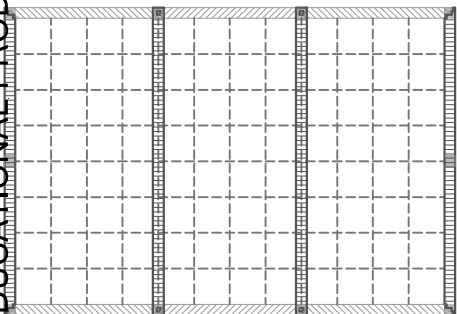


PRODUCED BY AN AUTODESK EDUCATIONAL PRODUCT

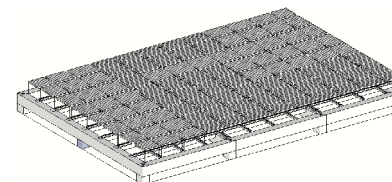
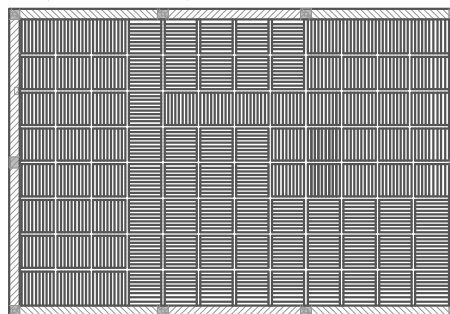


PRODUCED BY AN AUTODESK EDUCATIONAL PRODUCT

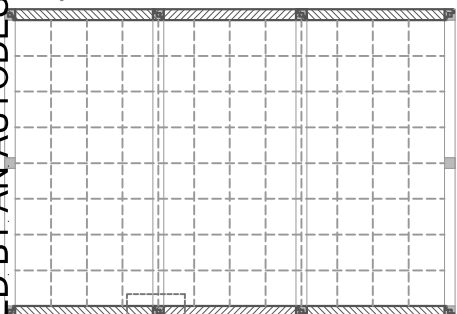
4 Vigas 0,30 x 0,40 x 8,60



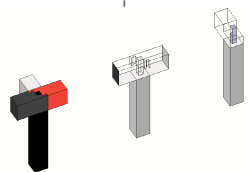
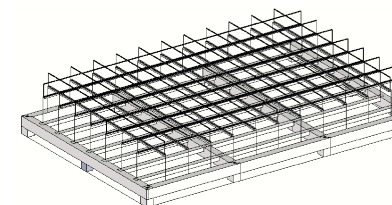
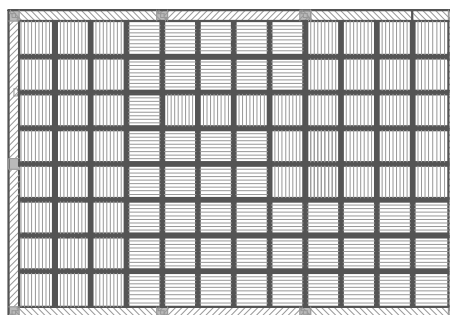
5- Ripas de madeira de pinho bravo 0,05 X 0,10 X 1




6 Vigas 0,30 x 0,40 x 4,45



6- Trilho



 UNIVERSIDADE DA BEIRA INTERIOR DEPARTAMENTO DE ENGENHARIA CIVIL E ARQUITETURA		
TEMA		
O SISTEMA CONSTRUTIVO MODULAR EM MADEIRA COMO CONTRIBUTO A ARQUITETURA SUSTENTAVEL		
DISSERTAÇÃO PARA OBTENÇÃO DO GRAU DE MESTRE EM ARQUITETURA (2º CICLO DE ESTUDOS)		
EXERCICIO		
ANTEPROJETO		
OBJETO	ESCALA	
PLANTA DE ESTRUTURA	1:100	
ORIENTADOR		
PROF. DOUTOR LUIZ ANTONIO PEREIRA DE OLIVEIRA		
DISCENTE	DATA	
ANGÉLIQUE CASEIRO 23139	JUNHO DE 2013	6

PRODUCED BY AN AUTODESK EDUCATIONAL PRODUCT

PRODUCED BY AN AUTODESK EDUCATIONAL PRODUCT