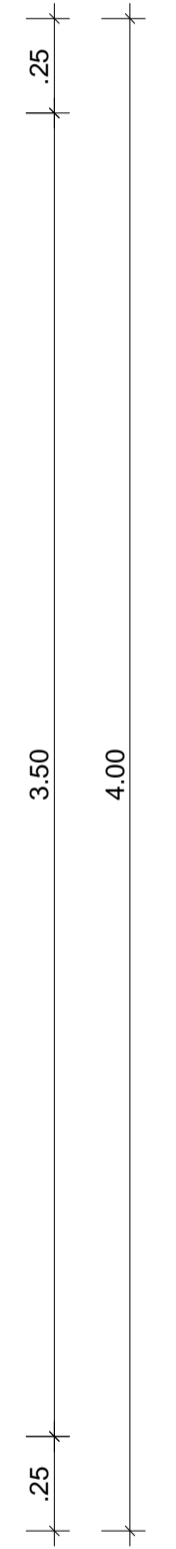
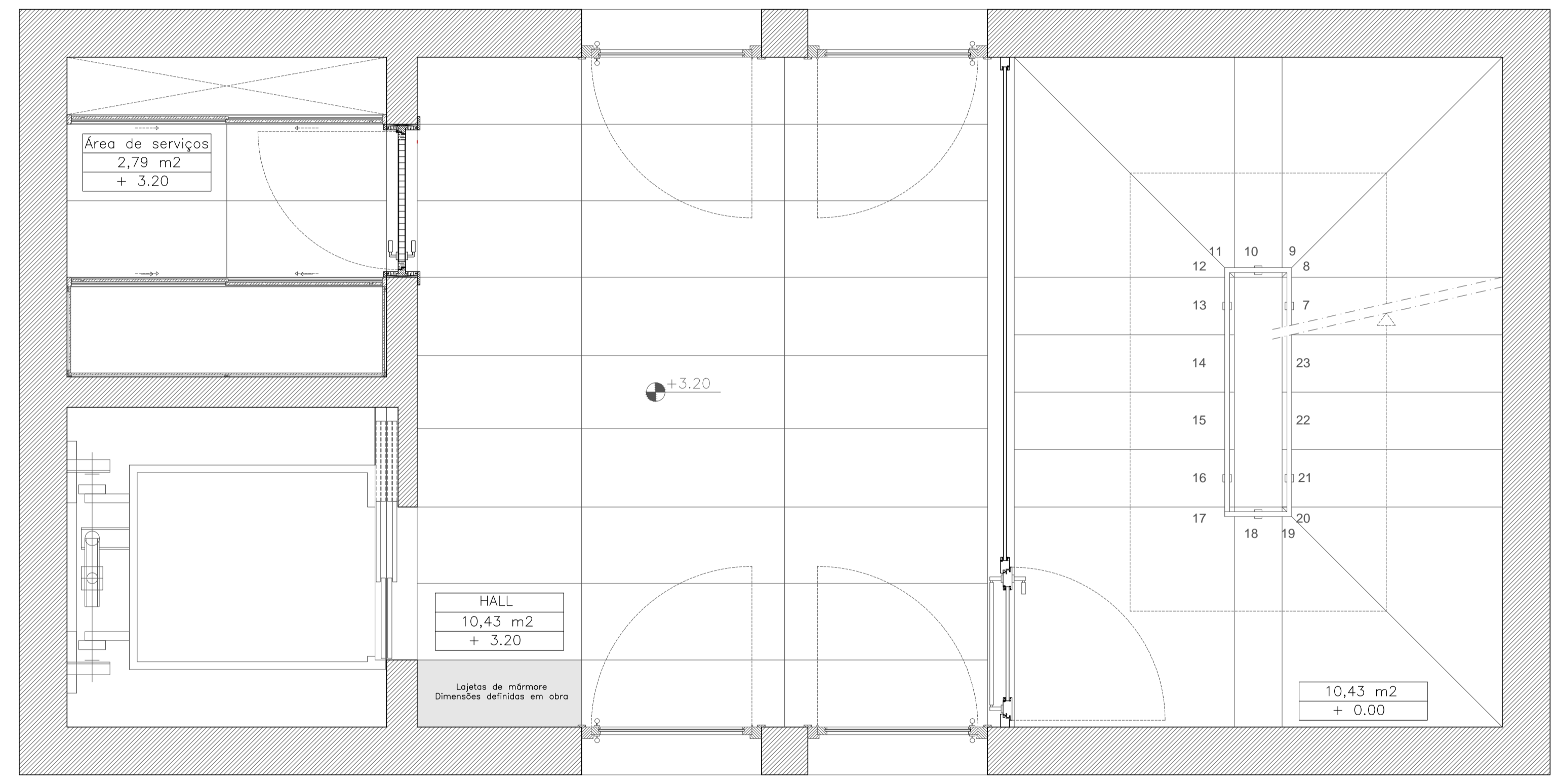
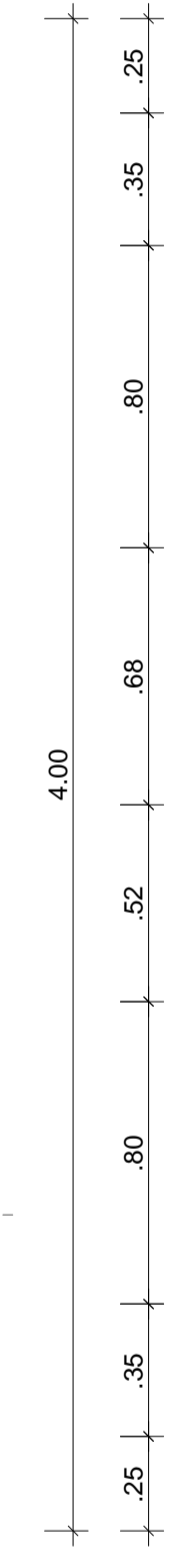
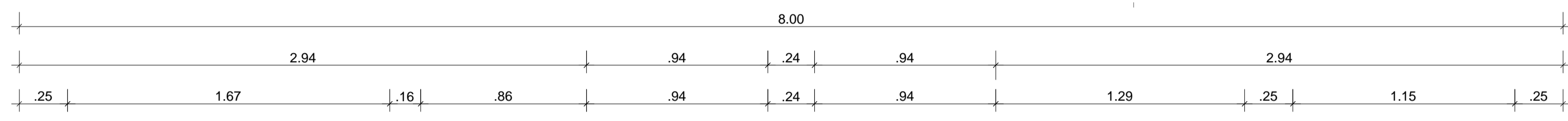


MATERIAIS

 Betão Armado

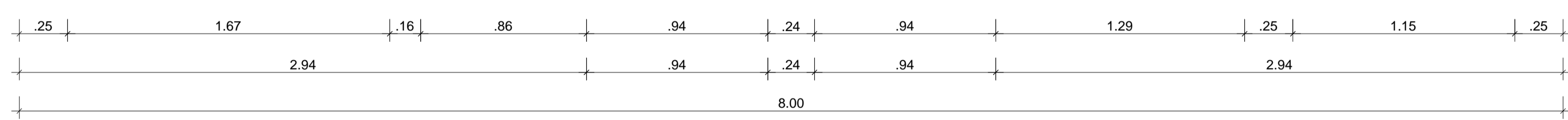
C



A

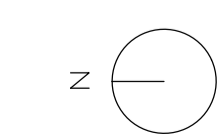
B

Planta à cota + 3.20



Planta

D



UMA HABITAÇÃO TRANSPORTÁVEL E FLEXÍVEL ARCHIGRAM COMO PONTO DE PARTIDA		
UBI. PROJECTO PARA A OBTENÇÃO DO GRAU DE MESTRE EM ARQUITECTURA		
ESCALA 1/20	PLANTA À COTA + 3.20_TORRE	FOLHA Nº3
DIOGO DUARTE ALVES PEREIRA. OUTUBRO DE 2013		