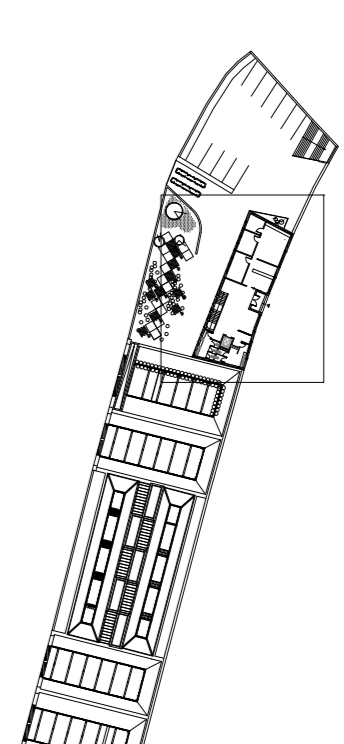


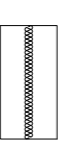




MAPA:



N

LEGENDA:

-  Tijolo cerâmico furado
-  Talha cerâmica manselha
-  Isolamento poliestireno extrudido
-  Madeira maciça de carvalho
-  Banho

- I. - FOYER
- r. - RECEÇÃO
- s. - SECRETARIA
- g. - GABINETE
- c.v. - CABIDESVESTIARIOS
- l.s. - INSTALAÇÃO SANITARIA



Escala

1:50

Tema	Caso de Estudo - Triluneta Patucci
Aluna	Joana Isabel Silva Teixeira de Brito
Orientador	Prof. Doutor João Carlos Gonçalves Lanzinha
Co-Orientador	Prof. Doutor Miguel João Mendes do Amaral Santiago Fernandes
Data	Junho 2012
Ano Lectivo	2011/2012

16

PROPOSTA
 PLANTA PISO 1