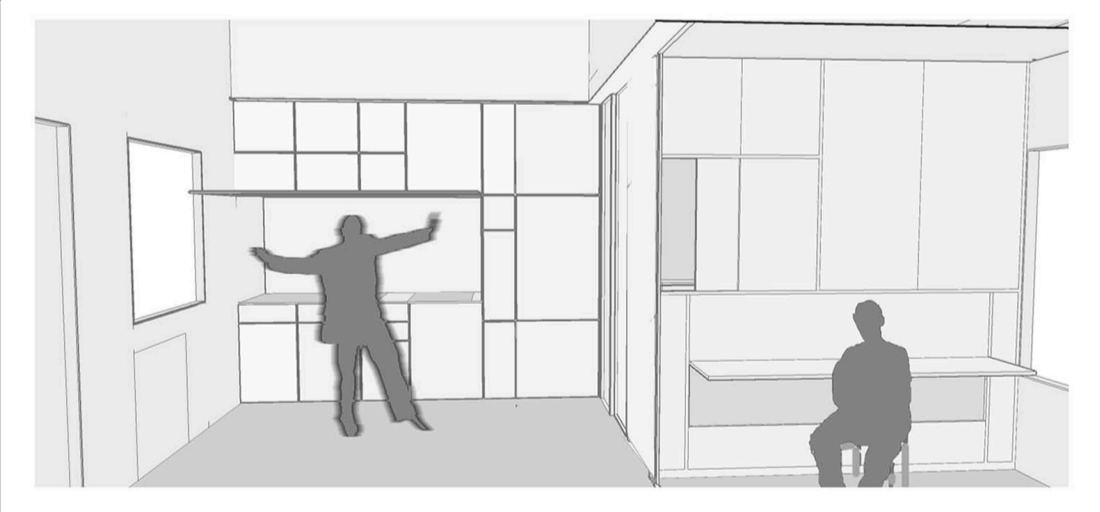
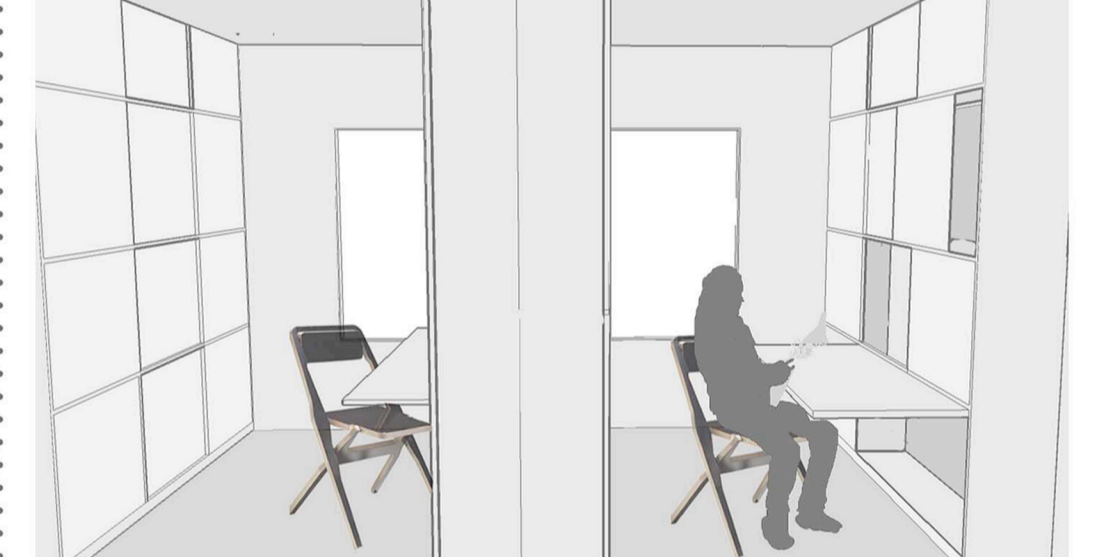
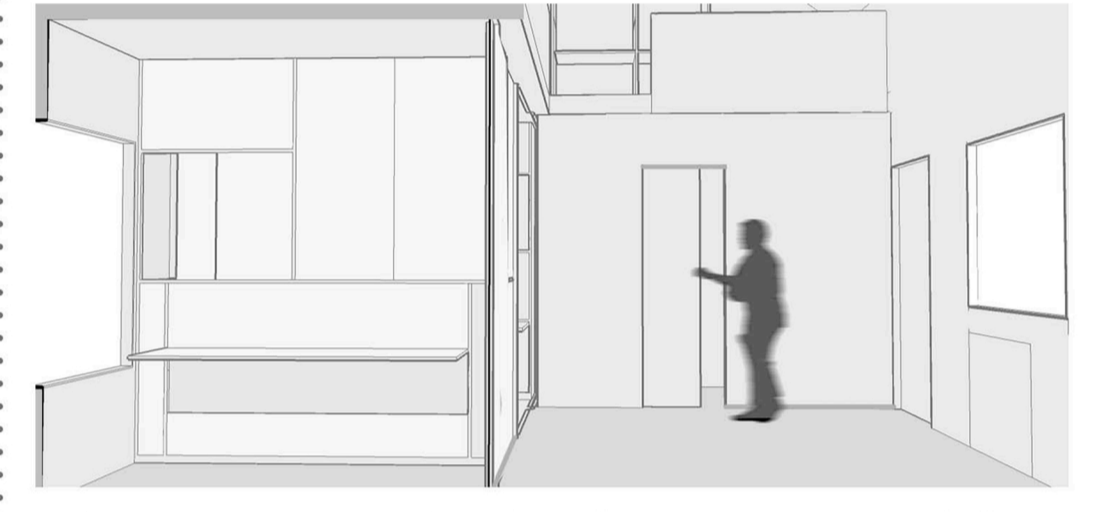
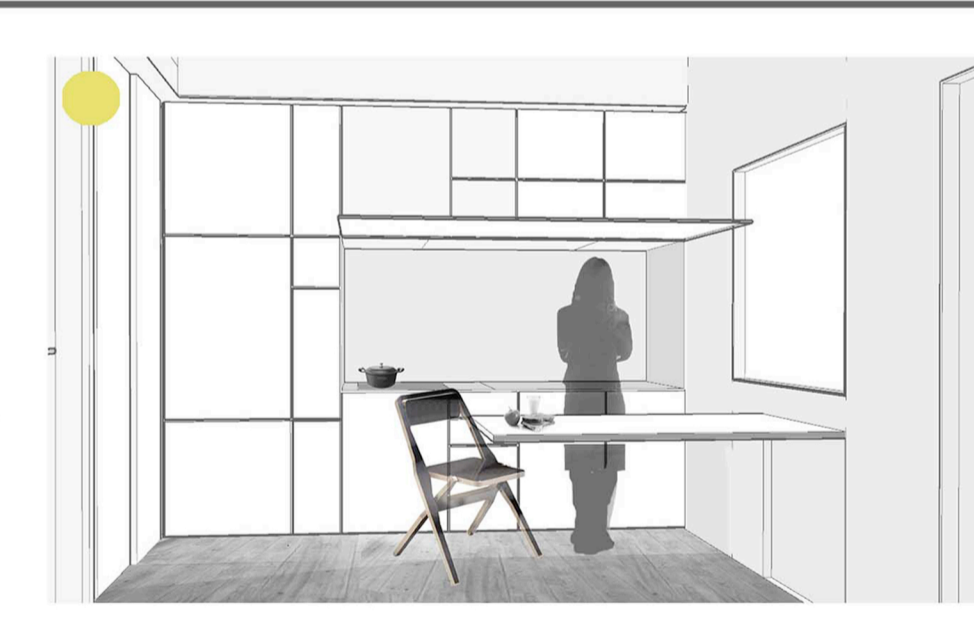
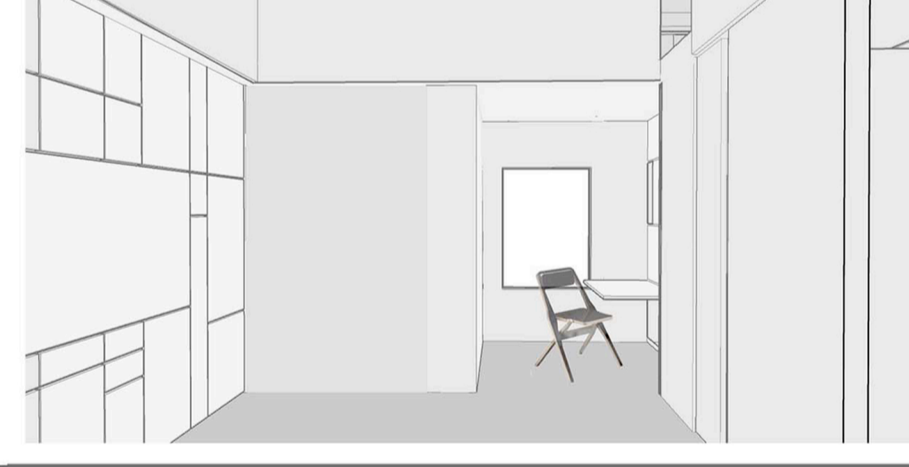
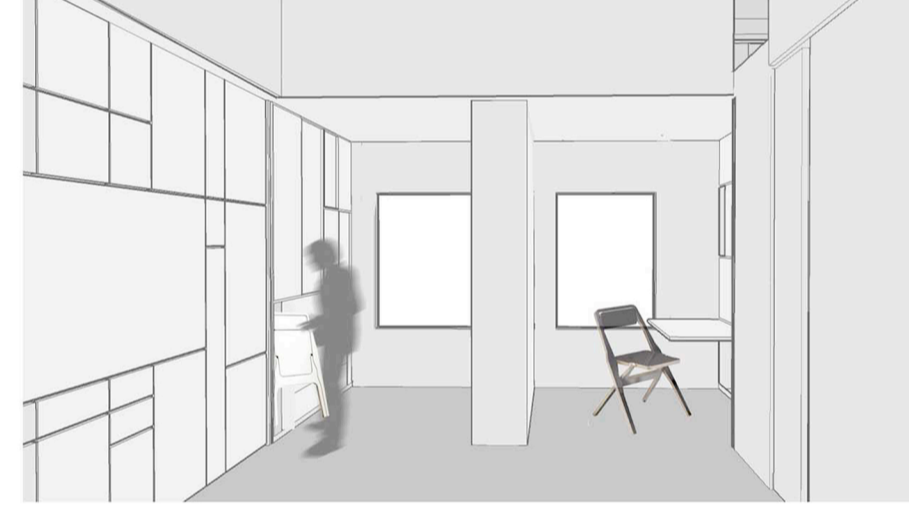
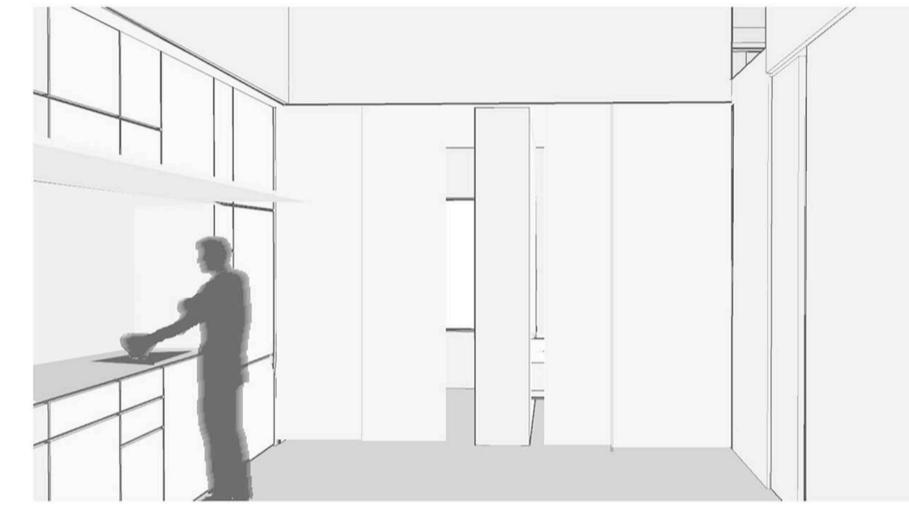
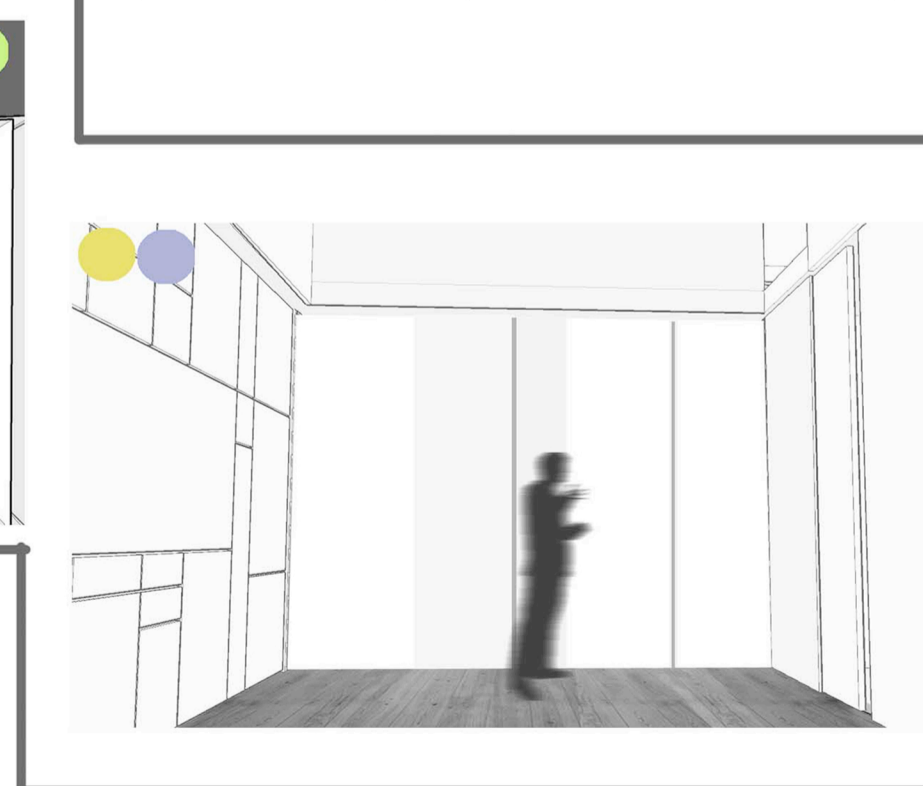
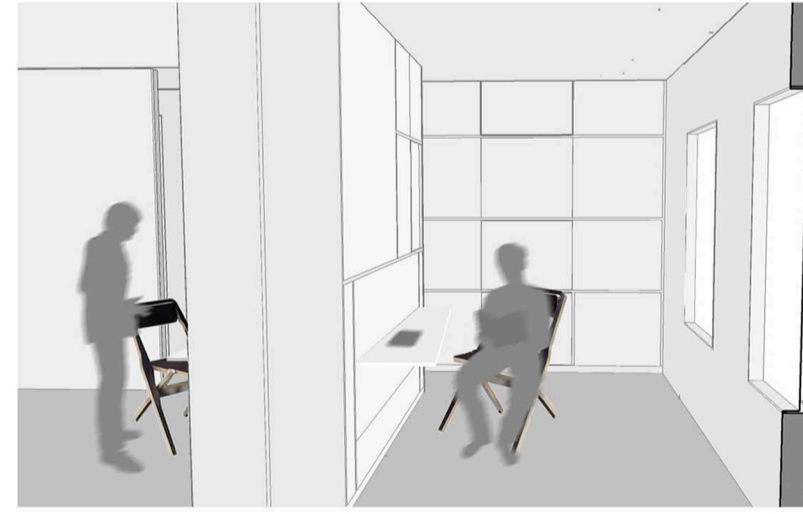
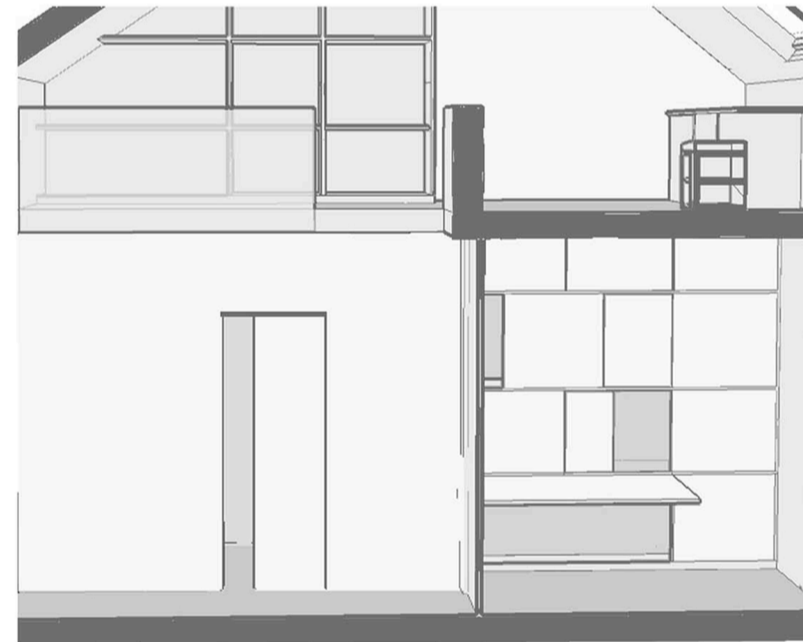
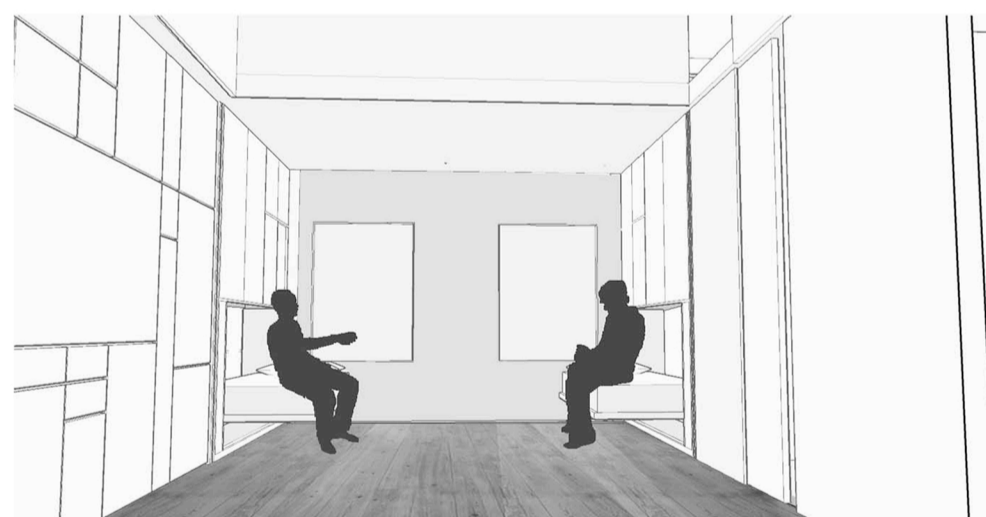
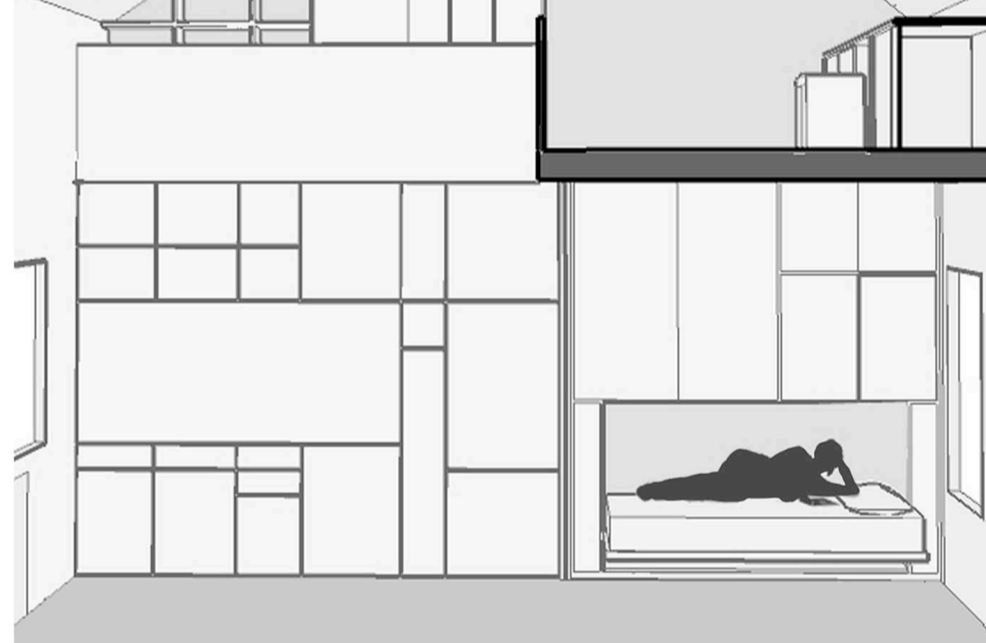
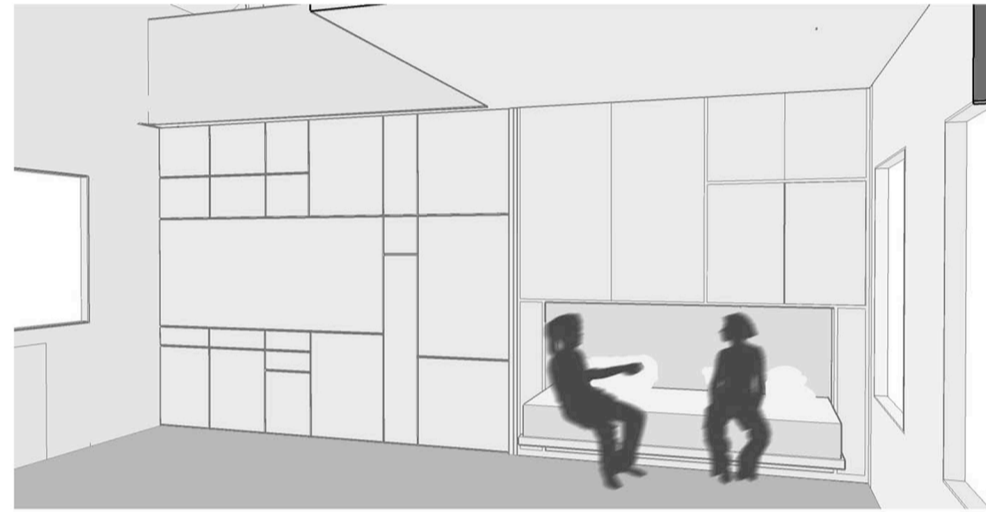
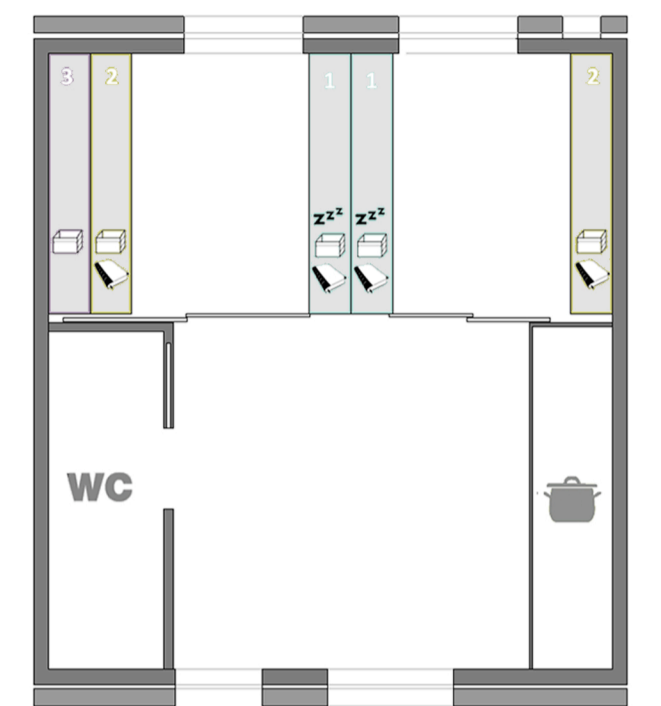
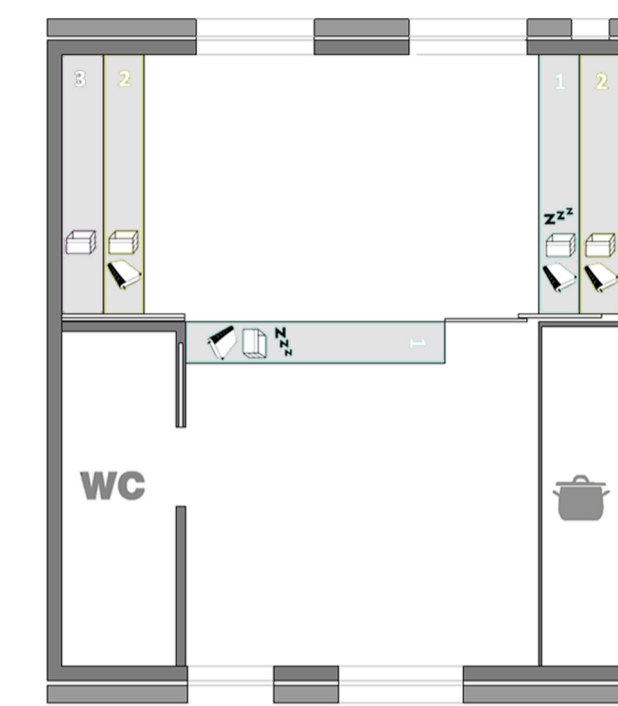
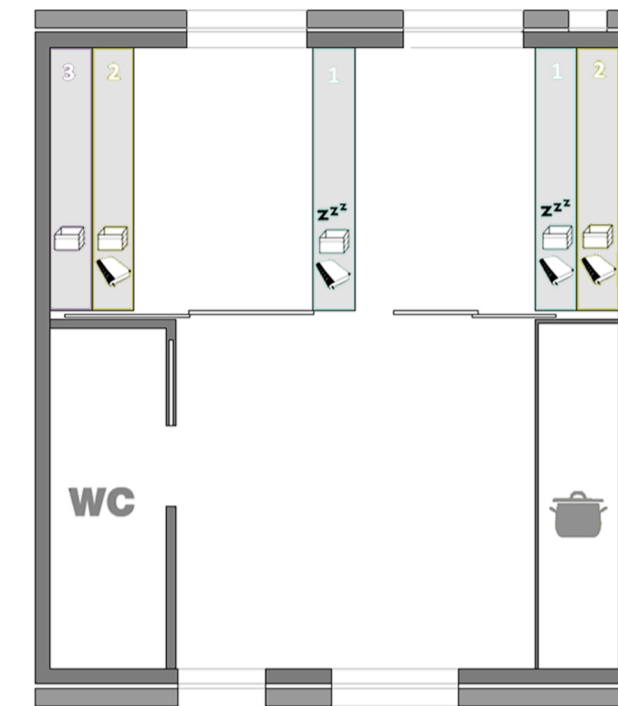
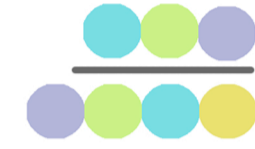
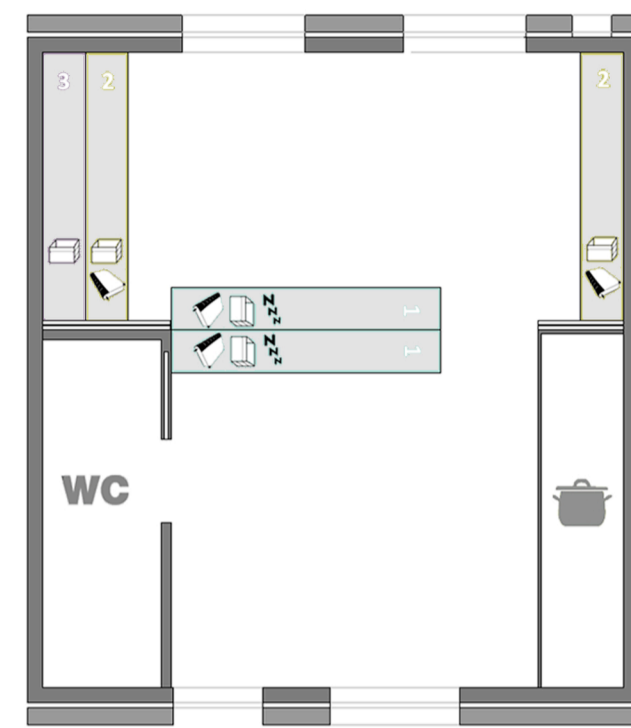
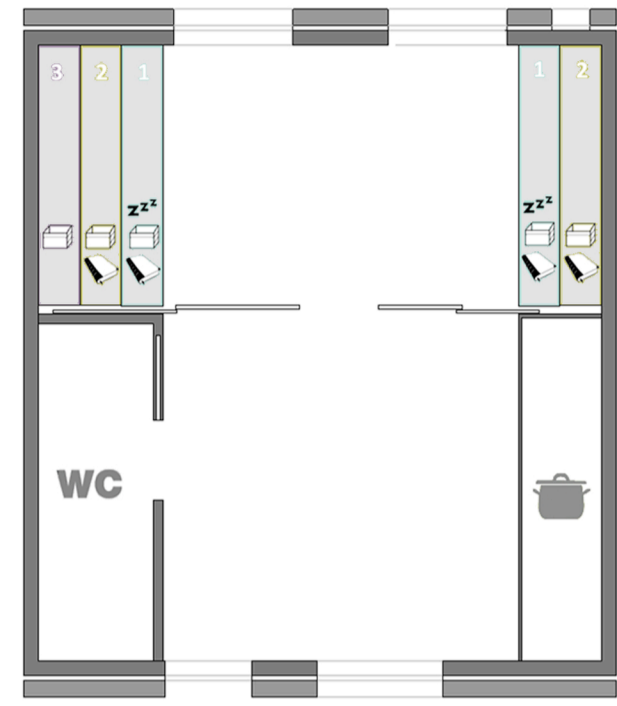


ESQUEMA DE FUNCIONALIDADES E PERSPECTIVAS DE VÁRIAS ORGANIZAÇÕES

FUNCIONALIDADES



ZONAS



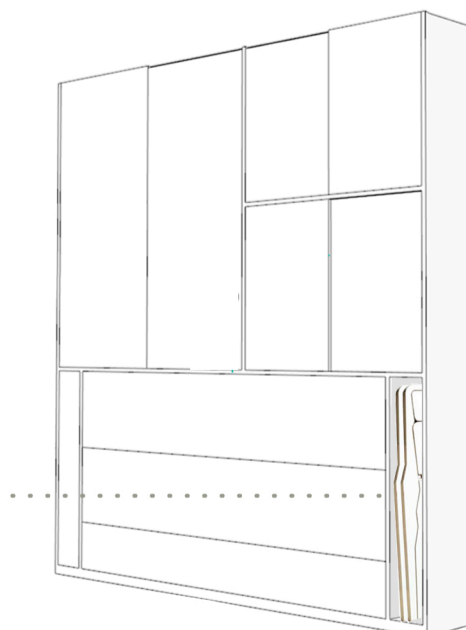
CADEIRAS DOBRÁVEIS



ABERTA

FECHADA

LOCAL DE ARRUMO



7 FACULDADE DE ENGENHARIA - UBI
2011 / 2012

CURSO	Arquitetura
TRABALHO	Projecto final de mestrado
ORIENTADOR	Arq.º José Neves Dias
DOCENTE	Margarida Fleming n.20757
TEMA	O mínimo como habitação ESPAÇOS PEQUENOS NUM PLANETA PEQUENO
LOCALIZAÇÃO	Covilhã, Bairro da Alegria
DESENHO	Esquema de Funcionalidades Perspectivas de Várias Organizações
ESCALA	